

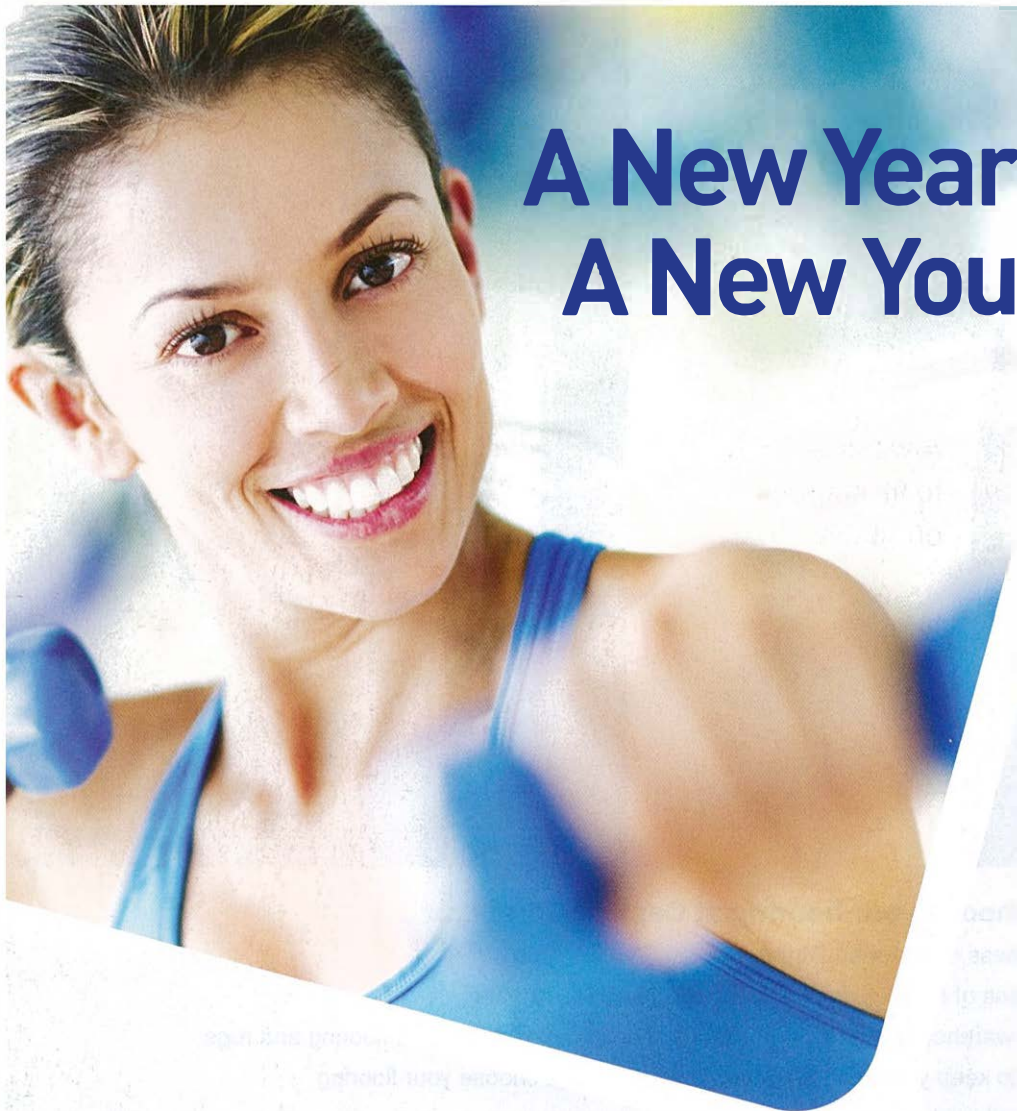
Phonebox

January 2014



22,000 Copies
Printed & Delivered
Door to Door

M A G A Z I N E



A New Year A New You



CHANGE YOUR HABITS

Whether you want to lose fat, develop your fitness or build some variety into your work-out, Olney Health & Fitness can help you. Why not change your habits? It is never too late to start.

- Friendly Staff Studio Classes
- Vibration Training
- Free Weights Resistance Machines
- Cardio Vascular Equipment
- Nutritional Advice
- Personal Training
- Fast-Tan Sunbed

STUDIO CLASSES

Free to members and only
£5 pay-as-you-go to non members*.

Classes include ZUMBA, Legs, Bums and Tums, Spin and Circuits. Visit our web site for a timetable www.olneyfitnessclub.co.uk/classes

Book online or call 01234 241383

*No membership required for class use. All classes are FOC with a gym membership excluding PAYG gym use.

One life. Be fit for it.
Call 01234 241383

Opening hours:
Mon - Thur: 6.30am to 9pm
Fri - 6.30am - 8pm
Sat & Sun: 9am to 1pm

Olney Health & Fitness
Incon House
10 Stilebrook Road
Olney, Bucks, MK46 5EA
e: reception@olneyfitnessclub.co.uk



Captain Carpet

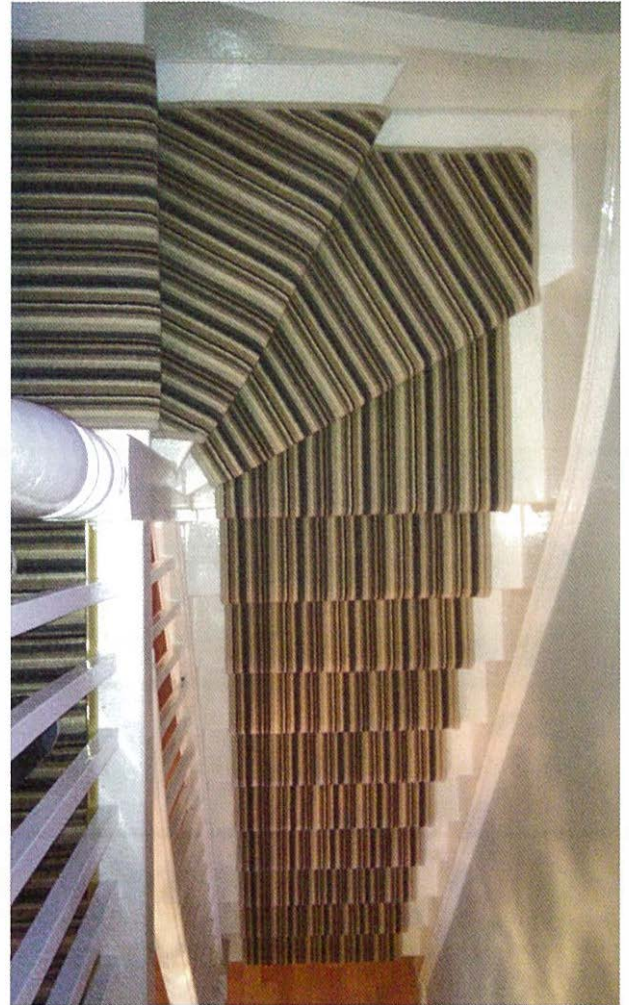
Your friendly face in flooring since 1989



Stair rods add that special touch



Always a pleasure to fit striped carpets on stairs



Great reasons to choose your flooring at Captain Carpet....

- Local family business established 24 years
- Serving generations of families across Bucks, Beds and Northants
- Huge 5,000 sq ft warehouse offering the widest collection of carpets, hard flooring and rugs
- Great play room to keep your children entertained while you choose your flooring
- Easy parking directly outside
- Commercial service for landlords, businesses and insurance work undertaken
- Carpet and rug Cleaning service
- Carpet Foundation member, an industry recognised organisation

Did you know? Free home shopping service - Captain Carpet has a 'shop at your leisure' service available so we can bring our flooring collections to you. Browse in the comfort of your home while we measure and provide you with quotes tailored to meet every budget.

Appointments to suit you - visit us or contact us today to find out more.

CENTRALLY LOCATED 15 MINS FROM MK, BEDFORD AND NORTHAMPTON

Visit us

Open Monday - Friday 9am - 5pm, Saturdays 9am - 4pm
The Barn, 1 The Courtyard
Home Farm, Warrington Rd
Olney, Bucks, MK46 4HN

Contact us

01234 241333

sales@captain-carpet.co.uk www.captain-carpet.co.uk



Follow us on Facebook 'Captain Carpet Ltd'



Chimney Sweep

A CLEAN CHIMNEY IS A SAFE CHIMNEY!

When it comes
to chimneys...

ASHWOOD Chimneys

CAN DO IT ALL

From top to bottom,
inside or out,
large or small.

If you have an issue
just give us a call!



- ✓ Chimney Sweeps - GAS FIRE REMOVALS/SWEEPS CATERED FOR
- ✓ Chimney Repairs & Rebuilds
- ✓ SUPPLIERS OF Pots, Bird-Guards & Cowls
- ✓ SUPPLY, FIT OR REMOVE Flues & Liners
- ✓ Wood Burners Installed: *Registered HETAS Installer*
- ✓ Thatches, Listed, Heritage Properties Catered For
- ✓ Fault Find & Problem Solve: *Camera Inspections Available*
- ✓ Landlords, Letting Agencies, Insurance Companies Welcome

ASHWOOD

Chimneys

01234 710936

www.ashwoodchimneys.co.uk



arts1

School of Performance

01908 615 154

arts1.co.uk

info@arts1.co.uk

New for ages 7 - 21

Holiday workshops

Musical Theatre learn from a team of West-End professionals
5 shows in 5 days #inspirational #songanddance #trainyourtalent
17th - 21st February 2014

Dance Daily technique classes alongside professional workshops
with the UK's leading dance practitioners #lovetodance
7th - 11th April 2014

Acting A week of professional acting classes and workshops including
contemporary and classical text and acting for camera
#LAMDA #shakespeare #tvandfilm #trainyourtalent
27th - 31st May 2014



Check out our weekly timetable of over 44 classes each week for age 3 - adult

Shakespeares brings local residential conveyancing, family and private client legal teams under one roof

Shakespeares is relocating its residential conveyancing, family law and private client practice, currently based at Newport Pagnell, to its expanding office in Milton Keynes as part of the firm's continuing drive to enhance its client service.

The (seven-strong) team of partners, solicitors and support staff to include Jane Chariton and Janet Clarke, currently based at Newport Pagnell, will be joining forces with the established teams at the firm's Milton Keynes office from the early New Year. The same legal team will continue to serve their clients from Newport Pagnell and across Buckinghamshire and existing wills and deeds will be moved across to the new Milton Keynes office with them.

Nick Brown, Managing Director of Shakespeares, said:

"This office relocation is a common sense move to improve our range of client services whilst ensuring that our existing clients in Newport Pagnell and across Buckinghamshire continue to receive the highest possible standard of legal services.

"By bringing our legal services teams in the county under one roof, we will be able to give businesses and individuals in the area access to a larger team of legal experts, including family and private client law, as well as corporate and commercial law."

The move will bring the total number of employees based at the Milton Keynes office to 45. The relocation to the Milton Keynes office is part of Shakespeares' ongoing growth strategy to strengthen its legal offering to clients and enhance business efficiency in the area.



Nick Brown, Managing Director of Shakespeares



SHAKESPEARES

Happy New Year!

Extra 10% off for all Gold Card holders

20% OFF ALL SERVICES

Valid from 29th December 2013 to 29th February 2014

*Not available with any other offer

browns

Now book online

Thank you for choosing Browns

www.browns-hair.co.uk



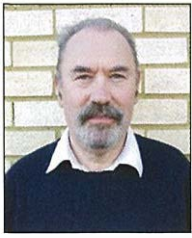
Tel: 0844 999 1365 | www.browns-hair.co.uk

Dagnall House, Stanley Court, Olney



Ny2014

PLEASE BRING THIS VOUCHER WITH YOU TO YOUR APPOINTMENT



Phonebox

M A G A Z I N E

Editorial

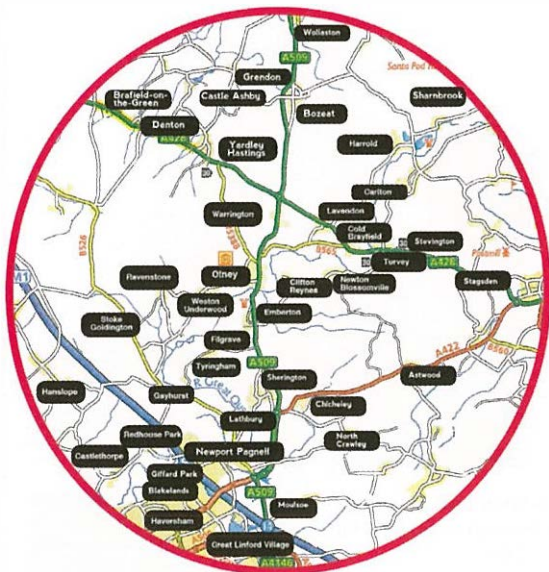
Well we've lots to entertain you in this month's magazine. Thanks to all the contributors both regular and those that send us in a column or two about what's been going on in their lives or an event, historical or recent, that has happened to them or someone they know. I know the Mayor of Newport Pagnell had a lot to organise at the last moment last month, and he still got his copy in. I'm sure he will be telling us all about that 'little' surprise soon. Congratulations on getting it all organised, John and Yvonne. A more busy Mayor I don't know! Read his article this month on page 11. Bananas are a topic inside, or perhaps more accurately the Coop's attitude to one, or more...

We've had several letters in regarding them... So we decided to investigate. Read more inside (page 13). We also have a bit of crystal ball gazing inside, our columnist Geoff Bacchus has his old almanac out and is at it again on page 14. See what you think about what he has to say and drop him a line if you agree, or not! One surprise coming soon is perhaps not the Pancake Race, but the number of prizes in this year's Pancake Raffle, and the quality of them. I've got my tickets. Have a look inside and get yours before they run out! Have a Happy New Year. ...And Happy Birthday Clare...
Ron Hall (Editor)

To advertise telephone 01234 713298 or email sales@phoneboxmagazine.com Email your letters, articles and news to editor@phoneboxmagazine.com web: www.phoneboxmagazine.com FACEBOOK: facebook.com/Phoneboxmag



22,000 copies printed & Delivered Door to Door



Camera Club

A Call Out from the Club



Ramble

Our Much Loved Walk Feature Returns



Dickens Day

Coverage of Christmas Fun



Sport

All the Latest News



Events

All the Latest Events Listed for You

For our readers in Astwood, Blakelands, Brayfield on the Green, Bozeat, Carlton, Castlethorpe, Chicheley, Clifton Reynes, Cold Brayfield, Denton, Emberton, Filgrave, Gayhurst, Giffard Park, Great Linford Village, Grendon Hanslope, Harrold, Haversham Village, Lathbury, Lavendon, Lavendon Grange, Moulsoe, Newport Pagnell, Newton Blossomville, North Crawley, Olney, Petsoe End, Ravenstone, Red House Park, Sharnbrook, Stagsden, Sherington, Stevington, Stoke Goldington, Turvey, Turvey Station, Tyringham, Lathbury, Weston Underwood, Wollaston, Yardley Hastings



Phonebox Magazine is owned and published by Phonebox Magazine Ltd, Unit 2 Stanley Court, Olney, Bucks MK46 5NH

Advertisers: We gratefully acknowledge the support of firms whose advertisements appear in this publication and, whilst every care is taken to ensure accuracy, the publishers regret they cannot accept responsibility for loss, damage or omission caused by error in the printing of an advertisement. Advertisements are accepted on the understanding that descriptions of goods and services are fair and accurate. All artwork is accepted on strict condition that permission has been given for use in this publication. Any reproduction of material, either advertising or editorial, is forbidden without written consent of the publishers. The publishers cannot accept responsibility for views expressed by contributors, or for the accuracy of claims made by advertisements appearing in this publication. Distribution may vary at the discretion of Phonebox Magazine Ltd.

Dusk till Dawn

Pop in and check out our new Prom Wear

SALE UP TO 60% OFF EVENING AND OCCASION WEAR

01234 712200
www.dusktdawn.co.uk

1st Floor Dagnall House, Stanley Court, Olney, Bucks, MK46 5NH



PAUL WILLIAMS

Domestic Appliances No Call Out Charge

SALES AND SERVICE

SERVICE AND REPAIRS TO: WASHING MACHINES, COOKERS, BUILT IN OVENS, TUMBLE DRYERS, etc.

Candy, Hoover and Hotpoint Specialist

ALL MAKES OF NEW APPLIANCES SUPPLIED – VERY COMPETITIVE PRICES

Free Delivery and Installation to Existing Services

9 Cedar Close, Irchester, Northants NN29 7BZ

Tel: (01933) 318010 • Mobile: (07860) 962194

OLNEY PRIVATE HIRE & TAXI SERVICE

Maureen's Cars

Tel: (01234) 712294

Hackney Carriages • Saloon Cars
Minibuses • Airports • Business & Pleasure • Courier Service

FRIENDLY PROFESSIONAL SERVICE
Long or short distances

Email: james@abchomejames.com
www.mktaxicabs.com

"A Better Way To Get You There"

Daves Blinds

Your local family-run company supplying blinds to both homes and businesses

Call Dave on: 01908 502141

Mobile: 07801 823804

with over 20 years experience

For free, no obligation, quotation and measuring service
Fair prices, exceptional service and top quality goods guaranteed

Vertical, Roller, Venetian, Roman, Wood and Pleated Blinds all available



Attention homeowners

Are you paying more than 2.5% for your mortgage?

If so, then call us to see if we can find you a better deal.

We have rates from 1.98%*

In addition, we can offer advice on cost effective and tax efficient ways on how to protect you and your dependents in the event of redundancy, illness, injury and death.

*1.98% rate based on a property valued at £300,000 with a 25 year term and loan amount of £225,000. This discounted variable rate will last for two years after which the rate will revert to the lender's variable rate, currently 5.69%. An arrangement fee of £800, payable to the lender, can be added to the loan. A booking fee of £195 is payable to the lender on submission of the mortgage application. APR 5.0%

Contact us now for a free initial consultation:

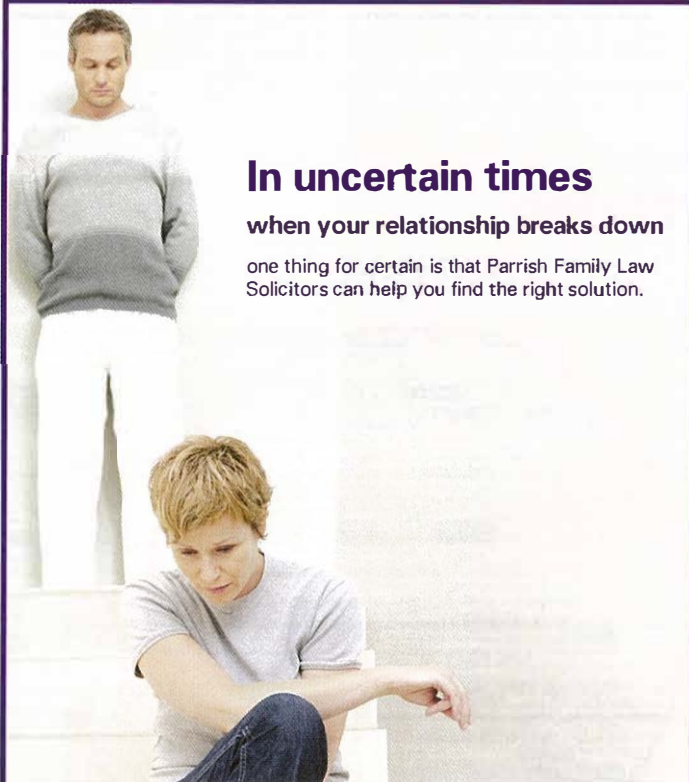
01234 712109 / 07940 801423

or email: nigel@linden-fs.co.uk

www.linden-fs.co.uk

The OLNEY Mortgage & Insurance Specialist

Think carefully before securing other debts against your home. Your home may be repossessed if you do not keep up repayments on your mortgage. Loans are subject to age, status and valuation. Ask for a personalised illustration. Please be advised that we charge a fee of £195 for our services



In uncertain times

when your relationship breaks down

one thing for certain is that Parrish Family Law Solicitors can help you find the right solution.

For expert advice call
Charmaine Parrish or Carol Hill
on 01234 711701.

www.parrishfamilylaw.co.uk

Covering Beds, Bucks & Northants
26 High Street South, Olney, MK46 4AA

parrish
FAMILY LAW

Divorce & Separation | Children Issues | Mediation | Finances | Collaborative Law

Cloudy2Clear Windows – Service With A Smile!

It's been a crazy few months for Cloudy2Clear Windows. The company which specialises in repairing windows which are steamed up, broken or damaged by replacing the panes – not the frames has grown rapidly as homeowners take advantage of their services.

Managing Director Billy Harley feels that it's all about service. 'Our product is simple. If your double

glazing is misted up we can replace the glass at a fraction of the cost of a new window, in any type of frame, and with a new 5 year guarantee. But it's not just about saving people money, although that obviously helps. Many tradespeople have struggled since last year and I honestly feel that during the good times a minority perhaps didn't focus on customer care as much as they should have done. We make sure we turn up when we

say we will, do the job the customer requires and leave their house as clean as a whistle. I often get comments back from customers on how they really didn't expect that sort of service which, in a way, is very sad for the service industry as a whole.'

Cloudy2Clear service the Milton Keynes, Bedford and Leighton Buzzard areas and Billy is finding that his approach is a major factor in his success. 'The truth is that it's

not just the personal satisfaction that I get from doing a good job but also it makes good business sense. I get a huge amount of business from friends and family of people I've done work for, which just goes to show how much a little bit of effort is appreciated.'

So, if your windows are steamed up, broken or damaged give Billy a call for a free quotation on 0800 61 21 118 and he'll be happy to help!



STEAMED UP DOUBLE GLAZING?

Don't replace the Frames... just the Panes!

**Broken or Damaged Windows?
Faulty Hinges, Handles or Locks?
Want The Latest Energy Saving Glass?**

All Glazing Backed By Our
5 Year Manufacturers Guarantee



Priority Freephone
0800 61 21 118
www.cloudy2clear.com

...we make saving money perfectly clear...

MASSIVE SALE

NOW ON!

SAVE UP TO
70%
ON RRP

LONG KNEE HIGH BOOTS FROM **£19.99**

BREVITT RIEKER FROM **£29.99**

SOFT LEATHER KNEE HIGH BOOTS **£39.99**

HUSH PUPPIES FROM **£29.99**

WARM LINED SLIPPERS **£7.99**

SNOW BOOTS **£29.99**

WATERPROOF HIKERS - LEATHER 35 TO 12S **£29.99**

DUNLOP GREEN WELLIES 35 TO 12S **£9.99**

LOTUS COURTS **£19.99**

WIDE FIT ANKLE BOOTS **£9.99**

PRETTY DRESSY PUMPS **£19.99**

SOFT LEATHER CASUALS **£19.99**

WIDE FIT LEATHER TRAINERS **£14.99**

PADDERS **£29.99**

MENS WARM LINED SNOW BOOTS **£14.99**

WIDE FITTING LEATHER LINED COURTS **£19.99**

WHILE STOCKS LAST - SUBJECT TO AVAILABILITY - HURRY BEFORE THEY'RE ALL GONE!

OPEN: 24TH - 27TH - 28TH - 29TH - 30TH - 31ST DEC & 2ND JAN 10.30 - 4.30

CLOSED: CHRISTMAS DAY - BOXING DAY - NEW YEARS DAY

Factory
Shoe Shop

Est. 1999

Factory Shoe Shop
10 Stanley Court, Olney
Tel: 01234 711200

Now on **ebay**
stores.ebay.co.uk/factory-shoeshop-olney
Visit our **amazon** Factory Shoe Shop Olney
(Amazon shoe ranges are available online only)

HUGE
REDUCTIONS
ON ALL
BRANDS!

CAPRICE

DUNLOP

HI-TEC
INSPIRED BY LIFE

HUSH PUPPIES

Loake
SHOEMAKERS

Lotus

MARCO TOZZI

Padders
feelgoodfeet™

rieker

Tamaris®

YARDLEY HASTINGS HERITAGE SOCIETY OPEN WEEKEND

The Yardley Hastings Heritage Society is holding an open weekend at the United Reformed Church, Castle Ashby Road, Yardley Hastings Northampton, on Saturday 25th and Sunday 26th January 2014 between 10am and 4pm.

A resident of Yardley Hastings has, over the years, assembled a wonderful archive of photos and documents of the people and history of the village. A few of us have got together to preserve these records and to assemble them onto an interactive website, in the same group of the Olney & District Historical Society Website, with a powerful search ability to make it easy to find individuals and link them to buildings, places and events and make all this available to everyone free of charge, anywhere in the World. We will be giving a live demonstration on a large screen to show you how it works. Anyone online will be able to access it after this demo.

However, we still have many gaps in our knowledge: people we can't identify, dates of photos missing, groups on outings we don't know, where pictures were taken and even where some houses were etc. Can you spare us a few minutes to come and help solve some of these mysteries for us and see if you recognise anybody?

Do you have old pictures that we don't? If so, please bring them with

you, as we would like to copy them (on the spot if we have time). Do you have any old newspaper clippings, articles or documents such as wills or deeds? We would love to look at those as well. Come along with any old family or village photos or memorabilia, we would love to see them.

Come and have some fun with us delving into the past of the village. If you can't make it and have something you think we may be interested in, please contact one of the names below who will copy it and return it to you.

Do you have a pet interest concerning the village, one you have researched, or would like to? If so, come and see us.

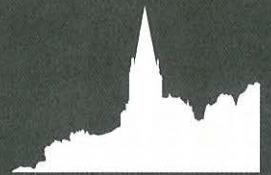
We are currently working on World War 1 so if you have any info about, or photos of those men of the village who served and/or fell during this period, please bring it along. For further details or offers of information please contact any of the following: Elizabeth Warwick (Secretary) on 01604 696241 or email

cwwarwick@aol.com Herbert Cave 01604 696736 or email herbert@greenyard.freemove.co.uk or email tony.siocombe@yardleyh.fsnet.co.uk



J. GARRARD & ALLEN SOLICITORS of Olney

EST 1799



Reassuringly Traditional...

...COMMERCIALLY ASTUTE

Agriculture &
Landed Estates

Business Advice

Commercial Property

Development Land
Options & Uplifts

Powers of Attorney &
Court of Protection

Residential Property

Divorce, Family &
Civil Partnerships

Litigation & Disputes

Landlord & Tenant

Negligence &
Personal Injury

Wills, Trusts & Probate

Settlement Agreements
& Employment



Our Offices:

By appointment at:

4 High Street, Olney, Buckinghamshire, MK46 4BB

1 Market Place, Woburn, Bedfordshire, MK17 9PZ

01234 711215

www.jgalaw.co.uk enquiries@jgalaw.co.uk



When we say **clean**
we mean
really really
clean!



We've been cleaning carpets, upholstery, curtains, leather and tile since 1998 with over 7000 local satisfied customers...

- Family owned business
- Fully trained, CRB checked employees
- ISO 9002 certified
- Carpets dry in 2 hours, not days
- Powerful truck-mounted equipment



... proudly serving Olney and the surrounding areas for over 15 years

Invite us round to quote for you and you will automatically receive a **FREE** can of our fantastic Stain Extinguisher (worth £9.99) as a thank you - *whether you ask us to clean or not!*



Call today and get an introductory

10%

discount* with this advert

01234 798200

or

01908 505305

*minimum spend applies

Which?
Trusted trader

email: gemma@chemdrymiltonkeynes.co.uk
www.chemdrymiltonkeynes.co.uk

For all your insurance needs

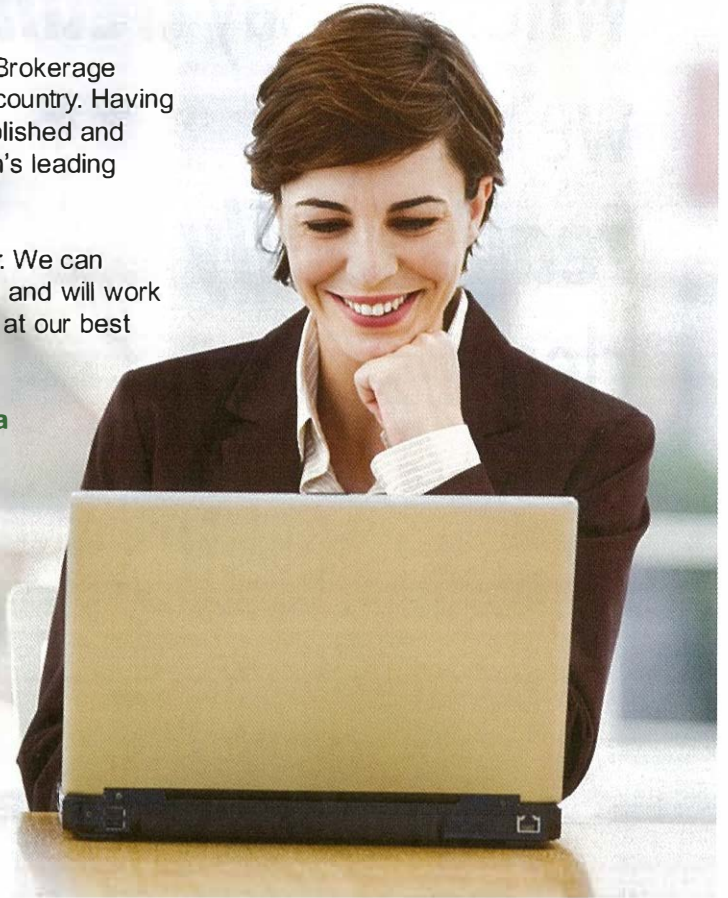
Coversure Insurance Services, the only UK Insurance Brokerage Franchise, has over 95 branches spanning across the country. Having delivered insurance solutions since 1986, they've established and developed working relationships with most of the nation's leading insurers, allowing them to provide first class products.

Coversure Milton Keynes is your local insurance broker. We can cater for all types of insurance - personal & commercial and will work tirelessly to ensure we provide you with our best policy, at our best price.

For any insurance enquiries, contact our office for a friendly, professional discussion.

01908 968 271

48 High Street, Newport Pagnell, MK16 8AQ



Enjoy a free New Patient* or free Implant Consultation

- ✦ Quality Private Family Dental Care
- ✦ Excellent Hygienist / Therapist Services
- ✦ Free Check-ups for Children*
- ✦ Easy Free Parking

CEREC® is here! Come and see our new CEREC® machine – the world's only 'one visit' system for porcelain crowns and natural-looking fillings. We'll show you how the technology works and explain how you could benefit.

We're easy to find Our beautiful family dental practice is located in the quiet rural village of Denton, just 15 mins drive from Earls Barton and 10 mins drive from Olney or Northampton.



SHORTLISTED

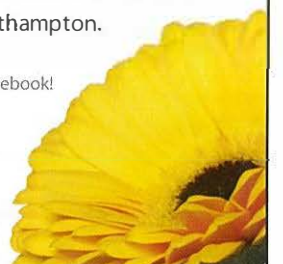


2009 FINALIST

Find us on Facebook!



*Terms and conditions apply



To book appointments tel: 0844 855 0205 Relax while we look after your smile... www.dentondentalcare.co.uk



Newport Pagnell

Cllr. John Smith



Here I am, sitting in my 'office' (spare room), thinking about a 'Happy New Year.' Trouble is, I haven't had Christmas yet! All these publishing deadlines play havoc with your inbuilt 'seasonal clock.' Despite that, I do wish for all of us, to have a happy, healthy and prosperous New Year. There is always hope that what we, as councillors, do is for the best. Each year brings a new set of problems that has to be dealt with. 2014 for us in Newport, will have us finish the monumental job of deciding what and how we deal with the future of Middleton Pool and the Willen Road sports ground. No doubt you all have heard rumours about what is happening to these facilities. Chances are, very little of what you have heard is true. Look for yourselves on the town council's website, www.newport-pagnell.org.uk Find the news release and learn the truth about the efforts being made to resolve the future of these facilities.

Your town councillors have a huge responsibility in looking after the town we all live in. We try to achieve the best value for all our residents, from what little we get from our cut of the Council Tax that you and I pay. Bear in mind, that apart from a meagre allowance for things like printer inks, paper and stamps, we are all volunteers doing the best we can. Many evenings are taken up with committee meetings and some are also held during the day. With the office of mayor, comes extra responsibilities over and above those meetings. In December prior to Christmas, I have at the moment, seven events to attend and as I said last month, Christmas Day itself will see me and Yvonne visit all the care homes in town. Despite all that, it is extremely rewarding to find that what you have strived for, comes to fruition.

The fun bits are what make being a mayor worthwhile. We went to Ousedale School's awards afternoon and evening in November. The afternoon session was for the presentation of the year 11 certificates. This was preceded by the school orchestra playing the Batman theme. They nailed it! Such a talented group of students giving it their all through music.

Such talent was also reflected in the academic awards. I had no idea that so many 'A' and 'A' star results were gained by all the students. This school has improved year on year, certainly since my children went there some years ago.

The evening session was to award year 13 students who had since left school. Looking at what they are now doing was quite inspirational. Those that had chosen employment, had chosen their paths to follow very carefully. The vast majority had moved on to universities/colleges of their choice. All the parents and teachers can be very proud of what has been achieved by these students. Being an ex-employee of Aston Martin, I was very pleased to attend the AM Works Christmas Reception. Apart from local invitees, the main body of guests were Aston Martin owners, coming along to see the old 'Olympia' building that had been transformed into a 'Heritage Centre.' Food and drink was lavished upon us all and there was live entertainment from a band with three young women singers, who looked a bit chilly in their skimpy-topped dresses. I was tempted to warm them up, but thought better of it as Yvonne would not have been amused. It is very good for Newport, when a high profile company such as Astons, decides to invest a huge sum of money in the town. A huge sum of money it must have been, because the buildings have been transformed beyond anything you would normally find in a small town such as ours. My thanks on behalf of Newport Pagnell goes to Kingsley Riding Felce, MD of AM Works, for his efforts to keep this facility here and not move with the manufacturing of the cars when they went to their new home. Kingsley and I started work just two weeks apart in 1976 at Astons and it was obvious from the start that he had designs on something more for himself. His own success in his job has secured work for others in the town, so well done Kingsley.

At the Christmas lights turn-on here in Newport, the Town Council had a gazebo in the High St. serving free minced pies and mulled wine. Yes, free! We were there to say hello to everyone and show to people who

we are. Also, we were there to publicise the forthcoming public consultation on the plan for the future of Newport. All was going well until the visit from the health and safety officer from MK Council. Having a gas cylinder in a gazebo was a no no. The simple solution to move it outside was done. Another problem was that we were using a gas cooker to heat the wine and could not prove that our gazebo was flame-retardant. We did have the required certificate, but not with us. So as not to appear to flaunt the rules, the decision was made to close down. A lesson learned here to all who will be in the same position as us in the future. Make sure you can be seen to comply. Public safety comes above everything else. The day itself was a big success with large crowds all day through and for the switch-on. We had a parade for the actual switch-on and were behind Father Christmas on his sleigh, being pulled by a motor-cycle trike. We were joined by the Mayor and Mayoress of Milton Keynes for the parade.

The last event we have been to, prior to writing and sending off this report, was 'A Dickens of a Christmas' in Olney. Perfect day! Sunshine, crowds, lots of stalls and craft fairs. Many people in costumes to add to the flavour of the day. Parking was a nightmare, so the Mayor's Limo (our Hyundai) was parked in a back street. This meant a few minutes' walk to the centre, to meet up with Stephen Clark the Mayor of Olney and the other guests of note. Brian White, MK Mayor in costume, taking his walking cane and putting it to good use in fending off the peasantry was entertaining! A nice day in good company. Thank you Olney. Yvonne and I have been to carol concerts given by so many different groups and organisations and all have been brilliant in their performances. We still have some more to go to, both locally and further afield. I will tell all next time. There is also a very big day in our family's life happening in just a couple of days' time. Watch this space! But for now, I must end this lot of drivel and send it off for publication. On behalf of Yvonne and myself,

I wish you all a happy and prosperous 2014.



The English language is quite a funny thing to get your head around at times. Once you know how words are pronounced, and in which context, it makes sense. But what if you don't? Some of these phrases could be particularly confusing to those learning English, and amusing for those of us who understand it:

There are a number of similar, and equally funny, ways that the English language can be misinterpreted. One of these stories is the story of the 'WC':

'Some time ago, an English lady, tired of the rain of England, went to look for a house to buy in Switzerland. She finally found the house of her dreams, had her offer accepted and returned to England to pack her belongings. While packing her bathroom things, she suddenly realised that she didn't remember seeing a bathroom in her new house. So she wrote to the Swiss estate agent asking for the whereabouts of the WC. The Swiss agent – his English being none too good – passed the letter on to the local priest for translation. Being unfamiliar with English abbreviations, the only meaning he could think of for WC was Wesleyan Chapel. The

English lady received the following reply: 'My Dear Madam, I take great pleasure in informing you that the WC is situated just nine miles from the house, in the centre of a beautiful grove of pine trees surrounded by lovely grounds. It is capable of holding 229 people, and is open only on Sundays and Thursdays.

- The bandage was wound around the wound
- He had had too much to drink
- The Polish man decided to polish his furniture
- At they farm they produce produce
- The dove dove into the bush
- The sewer fell into a sewer
- There was a row about how to row in a row
- We had to subject the subject to a series of tests

There are a great number of people expected during the summer months, so I suggest you come early, although there is usually only standing room and there are often long queues. This is an unfortunate situation, especially if you are in the habit of going regularly. It may interest you to know that my daughter was married in the WC, and it was there that she met her husband. I can remember the rush for seats - there were ten people

to every seat usually occupied by one. It was wonderful to see the expressions on all of their faces.

You will be glad to hear that a good many people bring their lunch to the WC and make a day of it, while those who can afford to go by car arrive just in time. I would especially recommend your Ladyship to

go on Thursdays, when there is organ accompaniment. The acoustics are excellent, in the WC, even the most delicate sounds can be heard everywhere.

The newest addition is a bell donated by a wealthy resident of the district. It rings every time a person enters. A bazaar is to be held to provide plush seats for all, since the people feel it is long needed.

My wife is rather delicate, and sadly she is unable to go regularly. It is almost

a year since she went last, and naturally it pains her very much not to be able to go more often.

If you let me know when you are planning on attending I shall be delighted to reserve the best seat in the WC for you, where you shall be seen by all. For the children there is a special day and time so they do not disturb their elders with their noises. Hoping to be of some service to you.

Yours faithfully...'

Fairtrade bananas?

Sarah Wall

Changing prices in supermarkets may now be something we almost expect to see on a regular basis. Many of us may turn a blind eye when bagging up our apples and pears in the fruit aisle, not noticing the end price as the grand total racks up at the tills. However, a recent letter received here at the Phonebox has drawn our attention to the issue of pricing fruit, particularly bananas in this case...

Dear Editor,

Recently the Co-op in Olney (and presumably all other Co-ops) has introduced a new pricing system for bananas, apples and pears, marking them at unit cost rather than by weight. This is evidently to make it all "easier to understand". What I understand, is that I can buy a large banana for 20p, but if I choose to have a smaller banana, it will still cost me 20p.

I noticed yesterday that this unit pricing is also being used in Tesco Express and the One-Stop Shop. As an experiment I bought 3 Gala apples at 39p each and 5 Braeburns, also at 39p each, at the One-Stop Shop. I weighed them when I got home, and it worked out at £1.17 per lb for the Galas but only 97p per lb for the Braeburns. Therefore, Braeburns are better value, but this was not clear from unit pricing "Easier to understand?" I don't think so!

"Fiona Youlton, Lavendon"

Now at a glance, you may think it is easier to go back to blind-buying and not take too much time and effort working out the price of a bunch of bananas. However, looking a bit deeper into it, there seems to be a much bigger issue here.

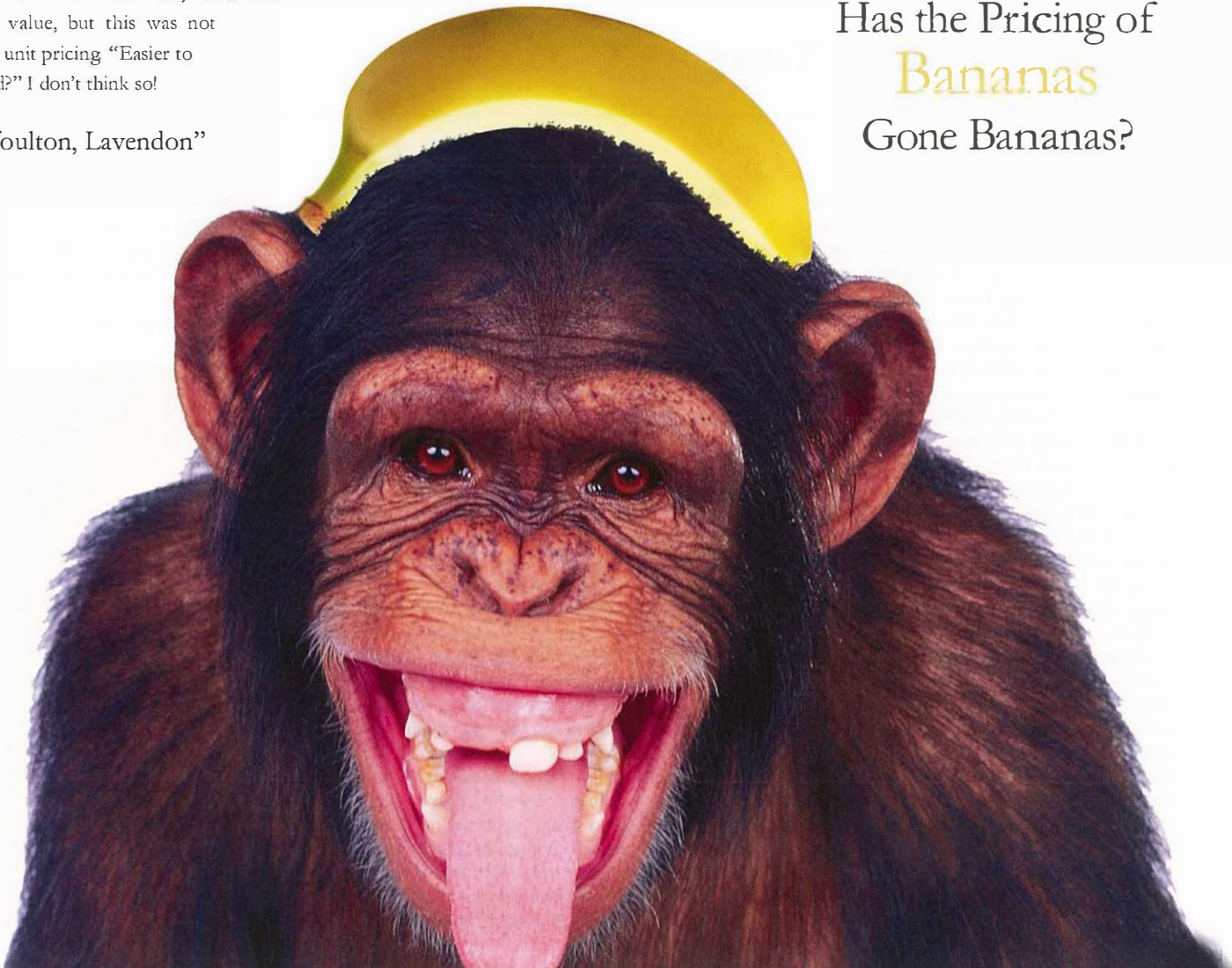
Assuming that us Brits like to get the best value for money, it would make sense that pricing bananas individually will cause the larger bananas to be bought, while the smaller ones are left on the shelves, not being seen worthy of their 20p price tag. With the Co-op in particular being very focused on social responsibility, and having a business aim of being an ethical leader, how does this equate to the charges being imposed, and the probability that waste may be increased through this scheme?

Not only would this affect local stores, but it would also have a knock-on effect on producers. The Co-op proudly state: "All our bananas are Fairtrade, and 55% are sourced from smallholder farmers" (sustainability report 2012). If small bananas cease to be sold in the UK stores, then there will no longer be a logical reason to import them. Consequently, the amount of produce Co-op farmers are able

to sell will be reduced, creating yet more waste at their end. With 55% of farmers being smallholders, there will be a large number of businesses affected.

It seems these small bananas will be wasted, as they will not be wanted. Surely the more sensible way of sorting this widespread issue would be to revert back to charging by weight for fruit and veg. Have the Co-op become too focused on making money to realise the effects of their price tags? Co-op states that while Fairtrade provides a better price for the seller, it doesn't mean unfair prices for the buyer. This doesn't seem to be the case. However, breaking news shows the Co-op have bowed to public pressure! Just as we were going to press, a spokesperson for The Co-op sent us this statement: "The Co-operative Food recently introduced individual pricing on some fruit and vegetable lines, including bananas, as part of a nationwide trial to simplify pricing for our customers. However, following feedback from customers, who say they prefer 'price per kilo', we will be reverting to 'price per kilo' in all stores." Hopefully, as you read this, the Co-op's banana prices will be back to business as usual! Mission accomplished!

Has the Pricing of Bananas Gone Bananas?



Watoto

Concert

We are looking forward to a new choir from Watoto coming to our area at the end of January. This will be the first time these youngsters, all orphans, have left their home villages in Uganda, where they are looked after in every respect by Watoto Childcare Ministries. Do come and see these enthusiastic and endearing youngsters sing and dance; they really are a choir like no other. They are inspiring! Their energy and sunny smiles will brighten a winter evening.

Both concerts are free, with a retiring collection. A variety of African items will also be on sale. The concerts are on the following two evenings and last around one hour and 15/30 minutes. Sunday 26th January at 6.00pm - St Mary's Church, Bletchley; Tuesday 28th January at 6.30pm - Olney Baptist Church.

For further information please contact Emma Beaney on 01908 415792 or Tom and Christine James on 01234 711900.



Crystal Gazing Time

Geoff Bacchus

Yes, it's that time of the Year. Whoever writes up Old Moore's Almanac has an easy time of it for they don't have to peer into the political prospect; so it falls to me to do just that. Right now my crystal has some very misty patches. Visibility is fine for the first six months, and the M.E.P. election is set to show a massive swing to UKIP, which will carry across into the field of local government. UKIP secured a good number of wins last year and should do even better this time, but I wonder, will the new arrivals include some strong public voices? The longer-term outlook seems to depend on UKIP coming to be seen as a party with far more than one well-known speaker.

May 2015, however, is set to be a massive watershed in our nation's affairs. Politicians of all parties now in parliament are seen by the man-in-the-street as a crowd of people interested in their own selfish money-grabbing hopes and the man-in-the-street has become utterly disenchanted. Those parties will all suffer the wrath of the electorate. Ed Miliband's united crowd, are now living with hopes which will not survive the exposure of the campaign season. If Cameron is still leading the Conservatives then they will lose anything up to a hundred seats.

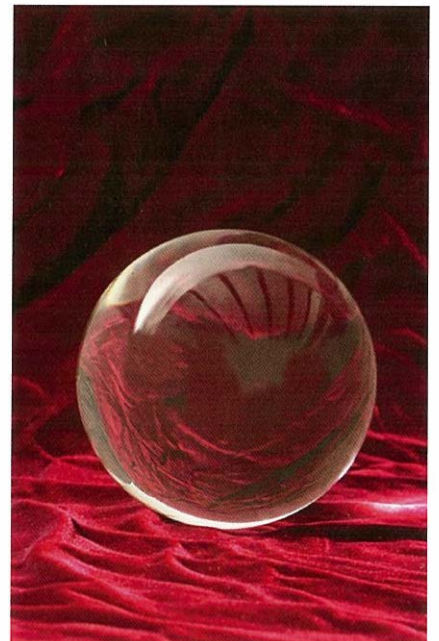
Cameron will become the first Premier to lose two general elections and win none; alongside this the rise of anti-European sentiment will ensure the near elimination of Clegg's crew.

Ridding ourselves of Lib-Dems will be a widely welcome development but what else will emerge from the chaos of May/June 2015? Much will depend on the incoming strength of UKIP. Since joining the Young Conservatives in October 1950 I've steadily paid my subscriptions to this day and will continue doing so, but I'll be voting UKIP for so long as it takes to rid the party and the country of David Cameron. When I joined back in the 50s there were over three million of us, but today I am one of scarcely 80,000. So where are the other three million? The answer appears to be that we all want a return to proper support for the family-friendly Christian traditions, on which our nation was built, together with the power to run our own affairs and make our own laws.

For many years I've done well from betting on elections, but I'm damned if I know where to place my stake right now. Hopefully we will at long last have the oft promise of a referendum and so terminate the European nightmare, but just when? I could write reams about my hopes and

preferences, but have long found it more interesting to listen to other people. I'll wager many readers will have your own views. May I hope for a few lines from some of you.

Geoff.bacchus@gmail.com





Pancake Day

No sooner has one Christian Festival been celebrated than the next one beckons. Shrove Tuesday which we know as Pancake Day is the day before Ash Wednesday, the start of Lent, the forty days leading up to Good Friday and Easter Day.

Shrove Tuesday is a day of celebration in many countries throughout the Christian World, but here in Olney, we celebrate with a Pancake Race and party all day with Children's Races in the morning starting at 10.30 am, followed by the main race at 11.55 am starting outside the Bull Hotel.

This year technology has taken over and the timing of the race will be done electronically with every runner having a chip strapped to their ankle so giving us a much more accurate timing for every runner. As usual the Olney race will be timed against the race in Liberal, Kansas, USA run six hours later and at the Church Hall at 6.30 pm we will find out who the International winner is. This year Tony and Viv Evans will be representing Olney in Liberal to see 'fair play' and experience the very special Liberal Pancake days.

Entry forms for ladies over 18 years who have lived in Olney for at least three months will be available from the NatWest Bank from the middle of January and when completed should be returned to the NatWest. Entries

are strictly on a first come basis so be sure to get in early. There are excellent prizes for the winner and runners, every runner gets a 'goody bag'.

On page 50 of the Phonebox is a list of the prizes for the Pancake Race Raffle and we are very fortunate to have such an impressive list. Please make sure you have a chance of winning by purchasing tickets. They will be on sale throughout the town from mid-January and there will be a stall on the Thursday Markets during February and the March Farmers Market. Please support the raffle as this raises money to help pay for the day and also to help maintain the fabric of the Parish Church.

All the prize-giving to the runners will take place in the Parish Church this year at the end of the Shroving Service, immediately after the race.

The Pancake Race Committee are very grateful to Francis Jackson Homes Ltd for their continued support as the main Sponsor of the day and to Dupont Teflon for their sponsorship of Prizes. Thanks are due to the Nat West Bank and the many businesses in the Town for their support.

Finally and most importantly please support Pancake Day by either by entering to run or by coming to support and enjoy all the activities on the day.



Hearth and Home Chimneys are pleased to be able to offer the complete package to suit your stove installation requirements.

Whether it's a supply and install, or just the installation service, we are able to custom build you a package to meet your needs and budget.

Hearth and Home

CHIMNEYS

PROFESSIONAL STOVE INSTALLATIONS

special offer

CEDAR package only £1395*

OTHER SERVICES provided by



Hearth and Home



CHIMNEYS

- Professional Sweep and Vacuum service £45
- Nest removals and guards fitted
- Chimneys capped

For advice or to make an appointment please call
01908 218201 / 07932 742582
 or visit www.hearthandhomechimneys.co.uk

CEDAR PACKAGE INCLUDES:

- 4.9 kw Multifuel stove
- 8 meters HETAS approved stainless steel chimney liner & fittings
 - Register plate & carbon monoxide alarm
- Full installation and HETAS Certification

*Price subject to site survey

Out and About

With MP Mark Lancaster



Stepping into a new year always makes us reflect on what we have achieved in the months gone by. Although we make our New Year resolutions and promise faithfully to stand by them, come February they are a distant memory! With all good intentions we can never predict what lies ahead, our paths are ever changing and this leads me to reflect on the number of volunteers in Milton Keynes.

During 2013, I was fortunate enough to meet for myself the many incredible volunteers whose commitment and dedication provide an invaluable service to a diverse group of organisations across Milton Keynes.

Trustees to befriending, sports programmes to parish councils and young people to retirees, there are so many opportunities for all. The skills that volunteers can bring do play a crucial role in supporting our organisations.

Community Action: MK are actively inspiring volunteers and would be happy to advise you with any questions you may have. So, if you make one resolution this year, may I suggest that you consider looking at the wide range of volunteering opportunities in your local community. It could be the best decision you make in 2014!

Also looking forward to the New Year are a number of my constituents who will be enjoying a newly installed BT phone line.

I have received a number of complaints about the long delays they were experiencing with BT and after weeks of being unable to secure a connection in Stoke Goldington, Hanslope and North Crawley, I was delighted to be able to assist in bringing their concerns to a swift conclusion.

Consequently, within days of one of the BT lines being installed, one lady in question had a serious fall and as a result was able to immediately contact the emergency services.

In recent months, I have also seen an increase in the number of complaints against the Disclosure and Barring Service, formerly the Criminal Records Bureau. Once again, applications for clearance to work with vulnerable groups have been significantly delayed. I was keen to ensure that these applications were processed as quickly as possible and with further intervention, I am pleased to say that those affected have now been resolved.

If you are experiencing any similar issues, please do contact me and I will endeavour to look into the matter for you.

One of my regular visits took me to meet the team at Westbury Grange Care Home in Newport Pagnell and over a coffee, I learnt how they have identified a need to support those in the early stages of dementia.

The project not only embraces the individual but also provides a wonderful opportunity for the whole family to come together. Families are being encouraged to develop peer relationships and to share to their own experiences of early stage dementia, which without a doubt is a rich source of valuable information indeed.

The innovative project and aptly named, The Memory Cafe, meets on the first Wednesday of each month. This plays a vital role in allaying many fears about the onset of dementia, the perception of care homes and the opportunities for respite. With the government backing an increase in funding for dementia, I will most certainly be working closely with this team and other associated projects to ensure that we develop a sustainable project for 2014 and beyond.



As ever, if you would like me to visit your organisation, or need my support, then don't hesitate to contact me on 01908 686830.

plumbco

If you're looking for a designer kitchen, bathroom or bedroom at **massively reduced prices**, the Plumbco January Sale is the place to be.

January Sales Event
Kitchen, Bathroom & Bedroom
On Now, Don't miss Out!



With a huge range of dream kitchens/ bathrooms & bedrooms available as supply only, or fully fitted by our team of expert fitters, you'll find exactly the style and look you're after.



So, visit our beautifully prepared showroom at Finedon Road, Wellingborough (Opposite Dianas) before 31st January and take advantage of our special offers.

Don't delay visit us now & see how much you can save on a stunning new Kitchen, bathroom or bedroom.

SCAN ME!



“

I decided to purchase my kitchen through you due to the competitive price but mainly due to the great service received by the staff who I dealt with. **Mr Dawson**

Fantastic service, excellent products. **Mr & Mrs Mason**

”

If you'd like to know more right now, please call us on 01933 224022 or visit our website www.plumbco.co.uk or find us on  for more testimonials & great promotions

plumbco

OPENING TIMES: 9-5pm Monday to Saturday
01933 224 022 | showroom@plumbco.co.uk

Unit 1 & 2 | Midland Business Units
Finedon Rd | Wellingborough | NN8 4AD

WIN WIN WIN - 3 Great Prizes

- 1 Georgia Bathroom Suite (as in showroom) 2 £250 Love To Shop Vouchers 3 Power Shower
For a chance to win one of our great prize giveaways, fill out this form and bring into the showroom

The date of the draw will be 31st January 2014

Learn How To Take Pictures When The Sun Doesn't Shine

Do you ever wish the sun would come out so you could take a good picture? Come to our January 22nd meeting and learn how to take good pictures whatever the weather.

Our November meeting was an AV competition. We had a high standard of entries, and the judge enjoyed the inventiveness and originality shown by the competitors. The winning AV was by Michael Clark and titled "A walk down the Euston Road".

At our recent AGM we had a good turnout, the future programme was discussed and categories chosen for next year's competitions.

The AGM also saw the stepping down of the club chairman Colin Gadsby, who founded the club 15 years ago and has worked hard ever since to make it the success it is today. All the club members would like to thank Colin for his hard work and dedication.

Steve Brown will be taking over from Colin, and we wish him success.

Our pictures this month won categories in our last Digital Images competition. One is by John Hughes and is titled "Lavender Girl" and won the Open Category, the other is by Lisa Winson and titled "It's in the Veins" and won the Symmetry category.



January Meeting

Our meeting in January-Weds 22nd. 20.00hrs, (not the usual club night) will be a talk by Stan McCartin "When the Sun doesn't shine".

For further information please view our website olneycameraclub.co.uk or call Gina Rymkiewicz on 01234 711657.

Left:
'It's in the Veins' by
Lisa Winson

See for yourself what your new windows, doors or conservatory will look like

Improving your home is a big decision so visit our extensive showroom to see first-hand the range and quality of our products.

- View our windows in different house settings
- Look at the wide range of doors
- Try our Aluminium & uPVC bi-folding doors
- Step inside the conservatories and our solid roof garden room
- See our range of garage doors in action

New Continental Range of doors now available



'A' Rated Energy Windows fitted as standard



Visit the most extensive showroom in the Milton Keynes area at:



Unit 8, Denbigh Hall Industrial Estate, Milton Keynes MK3 7QT

Open 7 days:
Mon - Fri 9am - 6pm
Sat 9.30am - 5pm
Sun 10am - 4pm

Follow us on Facebook and Twitter



Windows manufactured to BS 7413 and BS 7412



Call 01908 650140 or visit www.customglaze.co.uk for a no obligation online estimate



Make 2014 the year you plan for your future

What better New Year's Resolution than to plan long term financial security and direction for you and your family?

Jane Smith Financial Planning take the time to get to know you – your lifestyle as well as your hopes, fears, concerns and aspirations for yourself and those closest to you before we give you any advice.

If you would like to find out more about how Jane Smith Financial Planning Ltd can help you plan for your future, call us on **01234 713131** for a free initial appointment.

We look forward to hearing from you.



The fastest way to book an appointment is to call us on **01234 713131**. Initial appointments are at our own expense.

info@janesmithfinancial.com
www.janesmithfinancial.com

Twitter: @IFAIInOlney LinkedIn: IFAInOlney Facebook: /IFAIInOlney/

Jane Smith Financial Planning Ltd is authorised and regulated by the Financial Conduct Authority.
Jane Smith Financial Planning Ltd 7 Osier Way Olney Office Park Olney Bucks MK46 5FP. Tel: 01234 713131 Fax: 01234 714090

SALE

STARTS SATURDAY 28TH DECEMBER

Dreams of Olney Ltd

50%

OFF ALL STOCK

DAY WEAR SEPARATES FROM £5

CRUISE WEAR • MOTHER OF THE BRIDE • KNITWEAR
DAY WEAR • HANDBAGS & ACCESSORIES

Opening hours: Tues to Sat 10am-4pm

10 Weston Road, Olney, Bucks MK46 5BD Tel.01234 241101

Live and Local

NOTICES:

The Monday Club in Olney is looking for a volunteer. Would you like to prepare a meal for 25 elderly people once a month? If so, we would love to hear from you. We are looking for someone who would like to choose the menu, shop for the ingredients and cook the meal, for which you will be reimbursed. Alternatively, you could help the cook with the preparation, lay tables and serve the meals. Call Beryl on: 07725184002 for more information.

JANUARY

Visit The Royal British Legion 2nd and 16th January - (1st & 3rd Thursday of each month) at Acorn House, 361 Midsummer Boulevard, Milton Keynes, MK9 3HP 1pm-4pm. No appointment necessary. Information, advice and guidance for serving member of the Armed Forces, Reservists, veterans and their families. Call 08457 725 725.

Thursday Lunch Club @ The Olney Centre, High Street
January 2, 9, 16, 23, 30
Every Thursday at 12.30pm

Why not come along and join us for lunch? You will be sure of a warm welcome. Jenny Owen and her team from Age UK serve up a wonderful home-cooked two-course lunch, plus tea or coffee for £5.50. So if you are over 60 years of age, do come along – no need to book.

Green Park Community Centre, Newport Pagnell
January 2, 9, 16, 23, 30
Every Thursday, 10-12noon
Short Mat Bowls, Darts, Cards, Quizzes. £2 a week. If you are retired, why not come and join us?

Bedford Art Society Monthly Meeting
3rd January, 7.15pm for 7.30pm start

at Putnoe Heights Church, Bedford, MK41 8EB

Well-known local artist, Michael Croker, will give a demonstration relating to a current exhibition. The meeting concludes at around 9.30pm. Entry is free for members and £5 for visitors. Contact Jean Paterson 01234 307210 or visit www.bedsartsociety.co.uk for information.

Olney Senior Citizens Club @The Olney Centre
Jan 3rd: New Year lunch 12.30pm for 1pm start
Every Friday at 2pm
Jan 10th: Whist
Jan 17th: Bingo
Jan 24th: Update on Olney Newton link
Jan 31st: Musical quiz. WW2 cont'd

Live @ The Bull, Olney
5, 12, 19, 26 January. Every Sunday from 8pm. Open Mic and Gig Nights www.facebook.com/livebullolney. Please check with the new owners.

Farmers Market @ Olney Market Place
5th January
First Sunday of every month

The Monday Lunch Club @ Clifton Court, Olney MK46 4AW
6th, 13th, 20th and 27th January
If you would like to join a warm, friendly crowd at Clifton court, for a two-course, home cooked meal for £4.50, come along by 12 midday any Monday that is convenient for you. If you need help getting there call Beryl on 07725 184 002

Jazz Nights @ Cafe Brio
6, 13, 20, 27th January
Every Monday at 7.30pm
Come along and enjoy good food in a brilliant atmosphere with some great local music.

MUSIC AND FRIENDS.CO.UK **70s 80s 90s AND TODAY'S MUSIC** OVER 30's
SOUL, MOTOWN Dress Code Smart Casual
@ The Carlton House Club, High Street, Olney MK46 4BB



Party Night
Classic Dance Floor Fillers from the last 5 decades
Friday 31st January
£5 on the door www.musicandfriends.co.uk 7:30pm - 12

MUSIC AND FRIENDS.CO.UK **70s 80s 90s AND TODAY'S MUSIC** OVER 30's
SOUL, MOTOWN Dress Code Smart Casual
Saturday 8th February 7:30pm - 12:00am
The Harben House Hotel, Newport Pagnell, MK16 9EY



Live and direct from the USA
Luther Vandross
and the legends of Soul (featuring Dave Lee Andrews)
Classic hits from: Alexander O'neil, Lionel Richie, George Benson, And other soul legends (watch the video on our website)
Tickets £10
available from our website or pay on the door
Non-members are welcome
Supported by DJ
playing classic dance music from the last 5 decades
www.musicandfriends.co.uk

ZUMBA fitness **Step2Slim**

BURN FAT, GET FIT, TONE UP!
1 HOUR OF NON-STOP FUN
TO GREAT MUSIC (OPTIONAL 1LB HANDWEIGHTS AVAILABLE)
EVERY MOVE TONES YOU UP!
EXTRA BOOST MOVES TO BURN FAT & SPEED UP THE METABOLISM!
MON: HARROLD: URC, HIGH ST 7.30 - 8.30
TUES: OLNEY: STJOHN.AMB. HALL 8-9pm
WED: LAVENDON: V'GE HALL 7.00 - 7.30 (30 mins class for £2.50 - before Zumba)
£4.50 info: Amanda 01234 713433 www.step2slim.com

LAVENDON VILLAGE HALL EVERY WEDNESDAY
FROM 8TH JAN 2014
7.30 - 8.30pm
£4.50
or Zumba + Step2Slim for £6
Beginners welcome!
Amanda: 01234 713433
www.bedfordzumba.co.uk
www.freshmovesfitness.co.uk

Your Diary for All the Latest Local Events

Olney Archaeological Society @ The Olney Centre

Visitors welcome- £3 including refreshments. Membership £20. Tea/ coffee and biscuits included.

7th January, Tuesday, 10am to Noon

"Hubble, bubble, toil and Thrapston" a talk by Kevin Varty. The speaker has appeared frequently in the society's programme, and never fails to delight the audience with his curious talks, which are always scholarly and full of humour.

21st January, Tuesday, 10am-Noon

"The story of the home of Olney Heritage" a talk by John Perkins. The speaker, a local solicitor, is a former chairman of the North Bucks Decorative and Fine Arts Society, and has been closely involved with the development of the Cowper and Newton Museum for many years.

For info tel: 01234 711627

Newport Pagnell and District Probus Club

7th January

Would you like to join PROBUS - your local social club for retired business and professional people of both sexes? We meet at The Carlton House Club in Olney High Street on the **first Tuesday of each month from 12.15pm** for a buffet lunch at 12.45pm, followed by a speaker.

If you are interested please contact Ela Flint on 01908 231126 or send an e-mail to ela.flint@virgin.net

Olney Jazz Club:

7th January at Carlton Club, Olney. Alan Barnes (sax) and Bruce Adams (trumpet) with the Alan Haughton Trio £10/8 in advance.

4th February at Carlton Club, Olney. Josh Kemp's Jazz prophets £9/7 in advance.

4th March at Carlton Club, Olney. Amy Roberts (reeds) and Ian Bateman (trombone) with the Alan Haughton Trio £10/8 in advance.

Bozeat Players presents

The Wicked Witches of Oz. A panto twist on the classic tale.

8th January, Wednesday all tickets £3.50. Thursday to Saturday Adults £5, Children £4. 7.30pm. Matinee on Saturday 11th at 2.30pm. www.bozeatplayers.co.uk

NADFAS - Local branch of North Bucks DFAS @ Lovat Hall, Silver Street, Newport Pagnell

Second Thursday of each month. **9th January, Thursday**

We are a friendly society and would be pleased to meet you at one of our lectures. We also hold special interest days and have visits. Further details at www.northbucksdfas.co.uk

Sharnbrook Bowls Club Barn Dance

11th January 2014

To be held in the Village Hall, Sharnbrook from 7.30-11pm; including a ploughman's supper, tea and coffee - bring your own drink - Tickets £8.00 phone Shirley 01234 781348.

HULA Animal Rescue

New Year Get-together

12th January, Sunday, 1pm-3:30pm at South Midlands Animal Sanctuary, Glebe Farm, Salford Road, Aspley Guise MK17 8HZ. Between M1 Junction 13 and Woburn Sands (Nr. Aspley Guise Rail Station) Bargains in the Bazaar January Sale. Meet the Rescued Animals. Fun & Games for the children. Delicious Refreshments. Pre-loved Pet Accessories.

Dogs welcome and please invite all your friends.

Admission only £2 adults - Accompanied Children Free. Free Parking.

All proceeds for the care and welfare of Hula's animals.

Enquiries: 01908 584000

Registered Charity 1094115

www.hularescue.org

Email: hularescue@tiscali.co.uk



JS Designs have been suppliers and installers of quality kitchens in Olney and the surrounding areas since 2003. To celebrate over 10 years in business, we have introduced **KitchenAid** to our catalogue of luxury built in home appliances. Visit us soon to see these and our many ranges of kitchens, appliances and worktops and take advantages of some great new year offers. We look forward to seeing you soon.

KitchenAid coming to display in Jan 2014

Free
62 High Street
Olney, Bucks, MK46 4BE
01234 713 300
Visit our website
www.jsdesigns-interiors.com

Free
KitchenAid
Artisan Mixer
Worth over £400
When you buy your new kitchen from JS Designs.



Athen's & Janey's

SALE

NOW ON

5/6 Market Place, Olney

01234 711255

DITCH THE WORKOUT
JOIN THE PARTY!

Mon Zumba 7pm
Legs Bums Turns 8pm
Tickford Centre Newport Pagnell

Thurs Zumba + Core 7:45pm
Newport Pagnell Youth Club

PAY AS YOU GO - £5 PER CLASS - ALL LEVELS WELCOME



New Year, New Language

French Language Tuition

PTLL Qualified/CRB Checked
Senior Citizen/Group Rates
Native Parisian Tutor
One to One Tuition
A-Level Revision
Holiday French
Translation



A Little Bit of Paris

07591 913959

www.littlebitofparis.co.uk

Olney NAG

'Have Your Say' Meetings

13th January Meetings take place every fourth Monday in Costa Coffee in the Market Place. PCSO Tina Lewington and Susan Hughes are there from 10.30 to 11.30 am, so if you have any concerns or issues please come along and discuss them with us. Future **2014 Meetings** are scheduled for: 10th February; 10th March; 7th April; 2nd June; 30th June and 28th July. If you are interested in joining Olney Neighbourhood Action Group or would like any further information, please contact Susan Hughes on olneynag@googlemail.com or 07876 540577.

Newport Pagnell Women's Institute @ Royal British Legion Club

Second Tuesday of each month.
14th January, 7.30pm
'Dead, buried- but not for long'. Everyone welcome.

Watercolour Classes @ Irchester Bowls Club

16th January, 11am to 1pm or 1.30pm to 3.30pm on Thursdays or Fridays. Tutor: Fay Hipkin. £40 for 8 weeks. A limited number of vacancies are available for the above classes for the Sprint Term starting **Thursday January 16th 2014**. For further details please contact Fay or Ralph on 01234 712743.

Nene Valley Organ Club @ The Ex- Servicemens Club, 47 Sheep Street Northampton

20th January, Monday, 8pm
Charity concert in aid of NMPAT- Northamptonshire Music and performing Arts Trust. £5.

Olney Archaeological Society @ The Olney Centre

Visitors welcome- £3 including refreshments. Membership £20. Tea/ coffee and biscuits included.

21st January, Tuesday, 10am-Noon

"The story of the home of Olney Heritage" a talk by John Perkins. The speaker, a local solicitor, is a former chairman of the North Bucks Decorative and Fine Arts Society, and has been closely involved with the development of the Cowper and Newton Museum for many years. For info tel: 01234 711627

Olney & District Historical Society @ The Olney Centre, main hall

21st January, Tuesday, 7.30pm
A talk by Elizabeth Knight MBE - Our well known local historian. Making Lace for the 'Victorian Farm' TV Series. Meetings are held on the third Tuesday of each month. Membership fees for 2014 remain at £5 plus £1 per meeting. Visitors £2 per meeting. Refreshments included.

Olney Camera Club

22nd January, Wednesday, 8pm (not the usual club night). In the **Olney Centre**. A talk by Stan McCartin: "When the Sun doesn't shine". For further information please view our website www.olneycameraclub.co.uk or call Gina Rymkiewicz on 01234 711657.

Watoto Concert @ St. Mary's Church Bletchley

26th January, Sunday, 6pm
Come and see an inspiring concert of energetic singing and dancing by Watoto youngsters from Uganda. Free entry, retiring collection. African items on sale. For more information, contact Emma Beaney on 01908 415792

Cercle Français meetings (in French) @ 6 Rothsay Gardens, Bedford, MK40 3QB

Parlez-vous Français? 7.30pm most second and fourth Mondays of the month.

Interested in speaking French or learning more about the French way of life? Programme of talks and social evenings. Visitors and new members welcome. Email: cerclefrancaisbeds@btinternet.com or phone Frank 720692 or Katharine 888811.

27th January, Monday: Talk on French wine and wine tasting from Steve Hurst. (In English)

Watoto Concert @ Olney Baptist Church

28th January, Tuesday, 6.30pm
Come and see an inspiring concert of energetic singing and dancing by Watoto youngsters from Uganda. Free entry, retiring collection. African items on sale. For more information, contact Tom and Christine James on 01234 711900

3rd Cabaret Night

Friday 28th March 2014 at 8pm
Featuring the return of **Mark Goddard (MC), Alessa (International Cabaret Singer) Gold (Harmony Duo)**. Our all-star cast is headed by **MUD II** and also for the first time **Hellzaboppin'**

All in aid of Willen Hospice to be held at The Carlton House Club, 38 High Street, Olney Bucks, MK46 4BB. £25, includes a hot buffet. Tickets from: Carlton House Club, Olney; CT Wilson Hardware Shop, 84 High Street Olney, and Keith Miller, Ravenstone 01908 551028. Organised by the Residents of Ravenstone.

B&B available

Quiet location in Olney
Double room plus lounge room,
and en suite shower room.
Weekly rates available

Tel: 07961 287 795



W&H PEACOCK

AUCTIONEERS & VALUERS

Established 1901



Auction Every Saturday
Commencing 10am - Viewing every Friday 8.30am - 8.00pm

- Monthly Antique & Collectors' Auction
- Collection Service • Valuations
- Commercial & Specialist Auctions
- Onsite Sales • Live Online Auctions
- Timed Auctions • Insolvency Specialists
- Regular Valuation Days • Weekly Sales








Bedford Auction Centre 26 Newnham Street Bedford MK40 3JR
01234 266 366 www.peacockauction.co.uk






Hypnotherapy

John van Weenen
C.M.H., C.I.P.P., P.N.L.P., M.U.K.G.H.E.
Member of the United Kingdom Guild of Hypnotist Examiners
www.olneyhypnotherapy.com Email: johnvanweenen@btinternet.com

Lose Weight Fast!

The safe, sensible and proven way with Hypnosis. The results are astounding, with no drugs, no pain and no side effects whatsoever, all achieved through beautiful relaxation.

Smoking—Stress—Alcohol Abuse—Self Confidence—Insomnia—Anxieties
Just a few of the problems successfully dealt with using Hypnosis.

Call now for *free advice and a chat*, or to arrange a 30 minute free consultation totally without obligation.

Telephone: 01234 714 999



NVOC Present



Live music from all eras by Adam Smith
Comedy classic silent film
with accompaniment by **Matthew Bason**

EVENT in aid of NMPAT
Northamptonshire Music & Performing Arts Trust
Interval Raffle

Monday 20th January – 8pm to 10.30pm (doors open 7.15pm)

Held at Ex Servicemen's Club, Northampton Tickets - £5

For further details please call Keith on **01933 357 039**
Please leave message and contact number

Framed

Choose your frame from the comfort of your home or office

Samples of moulding and mount board are brought to you for selection so you can perfectly complement your artwork to your décor.

For an appointment, please contact:
Jane on 07961 287 795
jane@framed.org.uk
www.framed.org.uk

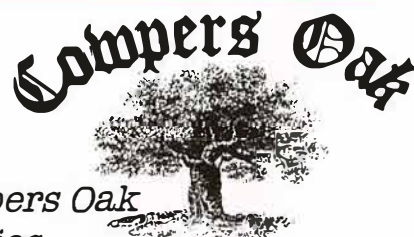
EXPERIENCED PA AVAILABLE

- Flexible working arrangements to suit
- Office based

Please call Nicki Hazell for further information
01234 241393

PLEASE NOTE: WE ARE CLOSED FOR KITCHEN MAINTENANCE & ANNUAL HOLIDAY ON 6th JANUARY AND REOPEN ON FRIDAY 17th JANUARY AT 5.30pm

Cowpers Oak in January...



BURNS NIGHT - SATURDAY 25th

Join us for our annual Burns Night Supper at the Cowpers Oak with Haggis, Bag Pipes and fantastic single malt whiskies

Offers & deals

MONDAY EVENING - BURGER & A DRINK FOR £9.95

with the Monday night quiz from 8pm

TUESDAY EVENING - PIE & A DRINK FOR £10.95

EVERY WEDNESDAY & THURSDAY EVENING - 2 COURSES FOR £12.95 choose from our evening menu

Visit our website at www.cowperoak.co.uk to sign up to our monthly newsletter and see the latest offers and deals including exclusive tasting evenings and offers

the cowpers oak @totheoak

cowpers oak, high street, weston underwood, bucks, mk46 5js
t: (01234) 711382 w: cowpersoak.co.uk

<p>The fitness class for active older adults or those returning to exercise</p> <p>FUN AND EASY TO FOLLOW</p> <p>MON: Giffard Park Community Centre (9.45am) Giffard Park MK14 5PY</p> <p>WED: The Olney Centre (2pm) Olney MK46 4EF</p> <p>Only £4 per session - Pay As You Go Or Buy 9 sessions and get your 10th one FREE</p>	<p>The high energy "Exercise in Disguise" workout</p> <p>COME & JOIN THE PARTY</p> <p>TUE: Tickford Park Primary School (6.45pm) Newport Pagnell MK16 9DH</p> <p>Bring small handweights if you have them (no more than 2kg) some toning sticks will be available</p> <p>Only £5 per session - Pay As You Go</p>
<p>JANUARY OFFER: Pay for your 1st class & get your 2nd class FREE Just quote PBJAN (new customers only) Info: www.exstress.co.uk Julia: 07779 339984</p>	

Flute/Piano lessons

available from a leading conservatoire trained professional, for children and adults.

Flute: Beginners to Advanced
Piano: Beginners to Grade 5

Please contact:
Emma Howard
DipRCM(Performers)DipRCM(Teachers)ARCM(PG)
Stoke Goldington.
Tel: 01908 551145

e: emmahoward@rocketmail.com

**Graham Terry
Private Guitar
Tuition**

**Classical
&
Electric**

07809121177
grahamterry@hotmail.co.uk

THE JOSEPH'S EXPERIENCE

3 The Courtyard, Brooklands Farm, Broughton, Milton Keynes
01908 692792

Create a
NEW YOU *this* **NEW YEAR!**

Alix and Elle are both experienced stylists, who love to listen to their clients, whilst they enjoy the relaxing ambience of our Spa Salon

CUT & FINISH
50% off

For ALL new Clients to our Salon in January and February

(Mondays-Fridays only and not to be used in conjunction with any other offer)



The Olney Allotment Holders Association AGM was held at the Carlton House Club recently and was well attended. Decisions to vote on a new constitution and formal election of a committee were passed. This entailed arranging an EGM for the 11th December at the Olney Centre. It was also agreed to join the National Allotment Society. Tom Aldridge won the Sidney Dix Cup for best Allotment. Tom not only has one of the best kept allotments but his assistance and advice to other allotmenters has been widespread and welcome.

A Heartfelt Thanks To Olney

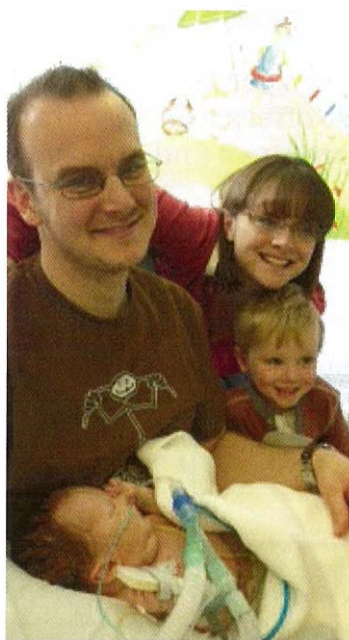
When local Lavendon family, Justin and Claire Crook, were expecting their second child, things were very rosy indeed. Mum and Dad were looking forward to a new baby and five year old Thomas was eagerly waiting a new brother or sister to play with. On 7th April, the day had finally arrived, and Claire was moved into the delivery room in Bedford Maternity Hospital to bring the new arrival into the world. The extended family, which included grandparents Jean and Gerald Wilson of CT Wilson's Hardware Shop in Olney, all awaited news of the new addition to the family... but things didn't go quite the way they were expecting when William was born.

It was immediately evident to the medical team that William had some severe problems with a number of his organs. Therein began a trauma which lasted seven long months, and has involved William receiving a number of lifesaving treatments in no less than five different hospitals.

Initially diagnosed with renal and intestinal failure, he has undergone many operations and procedures to remove large sections of his small intestine. He is being fed intravenously, in the hope that his gut will develop as he grows and will begin to absorb nutrients better, allowing him to eat orally. He is having dialysis for his renal failure and the hope is that he will be able to have a transplant in the future. This has all been in the first seven months of his life, and you can only imagine the cost and pressure this has put on family life.

Having been born in Bedford hospital and spent time in Luton & Dunstable, Leicester's Glenfield Hospital, Leicester Royal Infirmary and now Great Ormond Street Hospital in London, William has certainly been well travelled, but sadly the one place he has yet to see, is his home in Lavendon. Claire and Justin, both very involved in the local community through the St John Ambulance Brigade in Olney, have found that the situation they are in has forced them to put normal family life on hold. As you can imagine, the amount of travel between home and the various hospitals, allied to the need to find accommodation wherever William was being treated was a major issue, and one that was not surprisingly, causing stress to the entire family.

Fortunately, a less well-known charity, 'The Sick Children's Trust' came to their aid. This charity has accommodated them in clean, well looked after rooms within larger houses, taking a huge



financial pressure off them and, as Claire says, "also strangely eased the emotional strain". She could not stress enough how much this form of support was needed at such a difficult time for her and Justin. Their experiences have enabled them to see the value that the charitable sector contributes to parents who find themselves in the type of traumatic situation that they are facing as a family.

At the time of writing, William is still in Great Ormond Street Hospital, receiving life saving treatment, but this has not stopped Claire, Justin and the extended family, from looking at ways in which they can 'partially repay' the Sick Children's Trust for their support at this difficult time.

Gerald and Jean have embarked on a fundraising exercise to provide a stock of many common household items, which the trust would normally have to purchase for the properties which house such families. By supplying these items, they hope it will enable the trust to release much needed funds for the main purposes of the organisation.

Gerald and Jean have been amazed at how many friends, family and local people in Olney, have rallied round to contribute to the cause. Stocks of the articles needed are now building up nicely, and will shortly be passed over to the trust for distribution to the various houses which the trust has access to. This will ultimately benefit parents, such as Claire and Justin, who require to make extended visits to hospital with their children.

The family would also like to thank the Newport Pagnell and Olney Lions Club who have made a generous donation of £500 to their appeal. Rather than simply purchase a higher volume of household items, Claire and Justin would like to make a more substantial and longer lasting addition to one of the properties, and are now in discussions with the trust to identify an appropriate item. The photograph shows Tony Higgs of the Lions Club, formally handing over the Lions cheque to Jean.

The family would like to thank all the residents of Olney who have supported this appeal and have given such fantastic support to Claire, Justin and Thomas, as they move towards the day when William is finally out of hospital and at home with his family.



VAN WEENEN'S

ESTATE AGENTS

The Family Business



Jane Roberts - James



Linda Bamber



Haydn van Weenen



John van Weenen



Connor Kenchington

New Year! New Office!

To celebrate moving to our new office on the High Street, and to mark 11 years of serving the people of Olney and the surrounding villages, we are reducing our selling fees to 1% with No VAT for three months this New Year.

The opportunity to move to our new ground floor office at 9 High Street, (next to The Nest and just down from Barclays Bank), was one we simply had to take, as the location is superb in the heart of the town centre.

With the majority of enquiries coming from Internet sites like Rightmove, and from For Sale boards, buyers are simply contacting the Estate agent who has the properties. The hardest part for an agent, is being instructed to sell the property in the first place.

The reality is most Estate Agents will do the same job, that said we believe it's the individuals who are the Van Weenen team, who will offer you a service second to none. This, coupled with realistic selling fees, has to be the way forward and is our way of thanking the people of Olney for their loyalty over the last eleven years.

We are committed to working hard to get the maximum value for your home. We will leave no stone unturned, and will hopefully continue to earn your trust so you feel happy to recommend us to friends and family in the future.

So if you are thinking of selling, now or in the future please call Haydn van Weenen for a free and honest valuation.



Sellers Fees + No VAT

For more information on the NEW Government help to buy scheme please call

01234 714 003

All our properties can be viewed at

www.vanweenens.com | www.rightmove.co.uk



Lions in Action

A Busy Festive Season for the Club

The lead up to Christmas is always a busy month for us – and it wasn't purely fundraising.

November closed with us attending the Newport Pagnell Christmas Lights switch on where we were selling tickets for the annual MK Community Foundation Car Raffle. This was the 25th year that VW Group has donated a car for the raffle and thanks to Wayside Group in Bletchley, we again had a similar car as the centre point of our sales drive. Initial figures suggest this has been our best result for many years and the icing on the cake would be to see one of our ticket holders winning the main prize. If only!

A week later, it was the turn of Olney to see us out in force at our contribution to the annual Dickens of a Christmas with three Craft Fayres and a Birds of Prey exhibition - what an event that turned out to be this year.

The sun splitting the sky encouraged the crowds to hit Olney with a vengeance and they certainly seemed to be in a spending mood. A number of our stallholders actually sold out and it wasn't only the craftspeople who were smiling by the end of the day. Many of our visitors were delighted with the unique presents they were able to get at the event – "sure beats Milton Keynes any day" one very pleased visitor was heard to say. At the time of writing this article, we have still to finalise our figures but again, we seem to be heading for a record year.

The day sees us active from around 7.30am when we begin setting up the sites until after 5pm when they have to be 'broken down' again and without the help of a number of people, we would struggle to make it happen.

A number of our Friends Group came along to both events which was fantastic but special mention has to be given to members for 207 (Cranfield) Squadron of the ATC. Commanding Officer Fg Off Sue Warburton RAFVR(T) arranged for some of the cadets to give us some muscle at Olney and we were more than appreciative of their help. One of our stallholders was clearly impressed with their enthusiastic support and presented each cadet with a box of her cakes – just another example of the camaraderie which our Olney event seems to engender.

Our final fundraiser was back to Newport Pagnell with "A last minute Christmas Fair" – our third Fair this year and the most popular yet. Our Charity Account has received another great boost and Newport residents can look forward to many more in 2014 – keep an eye on Phonebox, Lions Website and local Posters.

What else did we do?

Money raised certainly doesn't lie in our bank account for long as we have a philosophy within the club to use your donations as quickly and sensibly as

possible. Living up to our motto of "We Serve", saw the members personally delivering a tin of festive biscuits to almost 300 of the more senior members of our community.

This is an activity which we have carried out for many years and we get a real buzz meeting old friends as we drop by with such a small gift which really does brighten up so many lives.

A major donation was made to the The Sick Children's Trust. This is a charity which provides temporary accommodation for parents who have travelled many miles from home to be beside their children who are often receiving life saving treatment. One local family have had cause to thank the trust as a result of their own situation and we were happy to make a significant donation to the charity on their behalf.

Most years we provide a level of support to local charity, MK Act and this year was no exception. This charity, often referred to as the Women's Refuge, actually supports anyone who suffers from domestic violence and we have set aside a sum from our charity account for a project which they are currently exploring.

The purchase of a life saving heart defibrillator to be located at the Brooklands Day Centre in Newport Pagnell was agreed. Although we hope that it will never be used, we feel that it's presence will give those attending the day centre a little comfort that it will be available if needed.

Our final 'cash pledge' in December was a little different. Two ladies will be heading off to Cuba in the summer as part of Women V Cancer, a sponsored cycle ride full of fun friendship and incredible support for an amazing cause.

The funds raised will combat breast, ovarian and cervical cancers and although we could have simply made a donation to their trip, felt that we could be a bit more creative in our support.

We have agreed to underwrite a significant part of a fundraising event which they are planning which will ensure that those attending can be confident that their ticket money will actually reach the charities concerned and not be swallowed up in costs.

Watch Phonebox for more information and get on board when the tickets for the event at Carlton club become available.

Over £3500 committed to a wide range of charities and good causes, most with a local influence and all in the space of a single month.



THE LIONS DEN

But it's not all work

Sadly, we will be saying goodbye to Mark and James at the Bull Inn, two absolute stalwarts who have supported the club since they arrived seven years ago. It seemed only fitting to have our Christmas Bash there and over 40 Lions and friends met to join in the celebrations of Christmas. Whilst the evening was tinged with a little sadness as we said a formal farewell to two of the nicest guys to be part of the Olney scene in recent years, we had an extremely enjoyable and fun evening as, through rose tinted glasses and between three fantastic courses and plenty of liquid, we looked back on a successful year. Proof, if ever it was needed that you can have a good time whilst putting something back to our community.



Stephen Oakley & Co

ESTATE AGENTS · SURVEYORS · VALUERS
PROPERTY MANAGERS & CONSULTANTS

For a **Free Valuation**
Contact **Stephen Oakley & Co**

*The area's most established
Independent Estate Agency
Serving Olney and Surrounding Villages*

TELEPHONE: 01234 711800

EMAIL: info@stephenoakley.co.uk

Drayview, 35 High Street, Olney,
Buckinghamshire MK46 4EB

www.stephenoakley.co.uk

Licensed by the NAEA and ARLA

Are you considering Selling or Letting?



Contemporary Interiors

Visit Our New Olney Showroom



Design, supply, install interior design services from planning permission to styling.

Hand crafted kitchens Fitted furniture Miele appliance
Curtains & Blinds Wall paper Fabrics & eco paints



Tristan Hay

W - www.tristanhayinteriors.com
T - 01234 910082
E - sales@tristanhayinteriors.co.uk

PLAN A ARCHITECTS



Rear extension to a house within the Emberton Conservation Area.

*If you are considering extending or refurbishing
your property then contact Matthew Smith,
an RIBA registered architect with the design
skills and experience to deliver your project
on time and within budget.*

RIBA  Royal Institute
of British Architects

www.plan-a-architects.co.uk

29-31 Orchard House, Milton Keynes MK19 7ES



Public Participation

Paul Collins, Chair of Trustees at the Cowper and Newton Museum, was the only member of the public to speak in this slot. After a recent unintended schedule clash between two musical events in the town, he urged the Council to consider implementing a central calendar for town events which local organisations would be free to use, thus reducing the possibility of such schedule related surprises in future.

Olney Dementia Project

The Council listened to a presentation from Joy Oehlman on the Olney Dementia Project, organised by the Friends of Cobbs Garden Surgery and made possible through generous donations from local businesses. It's in response to David Cameron's Dementia Challenge, and Joy is employed on a fixed term one year contract. Olney has a higher than average proportion of older people and, nationally, increases in dementia detection rates (currently 44%) are expected to significantly boost the proportion diagnosed with dementia.

Two thirds of those diagnosed with dementia live in the community, with many of them feeling let down and misunderstood by those around them. The Project aims to increase awareness and understanding of dementia, trying to address issues such as shopping – dementia sufferers tend to feel more comfortable shopping locally – and signage. While not the first initiative in the UK, that honour falling to York, it is the first in Milton Keynes borough.

Big Olney Food Festival 2014

Following on from last month, the Big Olney Food Festival (BOFF) has now formally asked the Council if it can extend its September 2014 event to two days. Sunday, the second day, would see the

Farmers' Market stalls housed under BOFF's covered area, encouraged to serve hot food and to stay at the venue late into the afternoon. The Council agreed to this request.

Proposed Road Changes

Although only mentioned briefly in this meeting, two proposed road changes have entered their consultation period – the High Street junctions with Yardley and Weston Roads. If you visited the Council's stall at Dickens of a Christmas, you'd have seen their details on display.

Hearing Loop System

As reported previously, the Council has been trying to install an improved hearing loop system in the Olney Centre. This has been progressing very slowly, with an external company having agreed to install a trial system but not yet having done so. In order to guarantee some progress, Councillors voted that, if the trial system was not ready by the January full Council meeting, Jeremy Rawlings would investigate the purchase of one or two boundary microphones and equipment to connect them to the existing hearing loop, thus hopefully providing a useful fixed system for the Council Chamber.

East Street Parking

Parking near the Sports fields at certain times during weekends continues to be a hot issue. Various possible solutions were discussed, and those which seemed most relevant are noted here. Firstly, the Rugby Club has offered an area in the West end of Doffs Field which could be used at weekends for sports related parking. Secondly, Tony Evans suggested the compulsory purchase of the vacant land North of and adjacent to the existing East Street car park, and currently classified as being for housing use. Peter Geary felt that the parking problem was a neighbourhood

planning issue, that there was a logical process to pass through and that, since it was a problem for only around four hours per week, there may be easier solutions such as traffic management. He also noted that, with its housing classification, this vacant parcel of land was extremely valuable and, to purchase it, the Council would likely need to request that another piece of land be classified as being for housing use. If this was done, then the money from the sale could be used to fund the purchase of the land adjacent to the car park. Tony Evans felt that having decided to reclassify this land as being for housing use, thus significantly inflating its value, Milton Keynes Council (MKC) should fund the land purchase. The only thing which seemed certain at the end of the discussion, was that this issue will run and run.

Traffic Management Training

Since the Police are generally no longer providing assistance with closing roads for local events, two three-hour training courses are being run in December, which will qualify those who complete them to be able to close roads with speed limits of 30MPH and below. They'll be attended by representatives from various local groups, and from the Council.

Rugby News

Duncan Taylor, previously a junior player at Olney Rugby Club, graduated to playing with Bedford Blues, now plays for Saracens and has six caps for Scotland. Councillors congratulated this major achievement.

The next meeting will be held at 7.30pm on Monday 6th January in the Council Chamber in the Olney Centre. Members of the public are always welcome to attend and, if they wish, speak at the start of the meeting, or at any point that the mayor decides is appropriate.

Mediation and the Law - a big change is happening

When businesses and families have serious rows everything can seem insoluble and legal action may follow. However, emotions and old grudges may cause a dispute that has nothing to do with the apparent "legal problem" everyone thinks they are arguing about. For example, I mediated a dispute between a spouse and the siblings of an elderly patient with dementia, about who should spend what time with the patient and control his care and welfare decisions. The spouse was distraught and felt threatened at the demands of the sibling group, who had little trust in her. This was resolved in one day after nearly a year's legal wrangling, court proceedings and after legal costs of over £30,000 had been spent. This was not about legal niceties - there was no dispute about money or the law. It was about grief, loss and the human tendency to displace impossible grief into something controllable,

like a big row over something. The only option for lawyers is to sift the evidence and translate it into a legal narrative - that is their role. The difficult relationship between people, their struggle with each other, their relationships - that is often the real problem. A trial or solicitors' letters can be like amputating a leg, because someone has an infection. It's as much use. So imagine a huge row - about a will, a sick relative, a business - or a commercial dispute between people who work together, or about a contract - wherever there are people - there will be disagreements. It is human nature. Each participant comes at it with their own interpretation of the "truth" with their own beliefs, which tend to be re-enforced through debate, as people don't want to back down. The conventional, legal ritual inflames the conflict drivers of the dispute, so it escalates. The

Law concerns itself with the evidence and legal issues - but those are often not what matters to people. Mediation reaches the conflict drivers, the beliefs and misunderstandings that fuel disputes. Mediation is far more likely to resolve the argument, as it deals with a far wider range of issues than the law can. Given the success of mediation at sorting out disputes, it is a wonder it isn't a first choice for anyone with a possible court application, but it hasn't been so far. This is because the allure of court is that the judge will agree with you and the other person will be found to be "wrong" or "at fault" People want to be found to be "right", it is much more appealing than a settlement. The problem is, usually both parties think they are right and the law of averages says half must be wrong! The court costs are huge, they frequently dwarf the financial value of the issue being



Mary Banham-Hall
Lead Mediator

mediated - then everyone loses out. The court timescale is long, but by the time the proceedings are under way, it can feel there's no way out. However, since April the courts are increasingly directing people to mediation. The tide is turning in favour of fast and affordable, non-adjudicated resolution in mediation for all disputes, whether commercial or family. Our experienced specialist mediation team are proud to be mediation experts. Visit our website for more information www.focus-mediation.co.uk or call us for help on 01908 410509. Mary Banham-Hall Lead Mediator of Focus Mediation.



We are accredited experts dedicated to mediation

Our mediation panel includes mediators from many professional back grounds so we can bring the right skills to your dispute

We have been mediating for 14 years and our mediators are experienced at mediation

FOCUSmediation 
Effective Dispute Resolution

Call 01908 410509
www.focus-mediation.co.uk

Accountancy Services

For self-employed and small businesses. Friendly service at competitive rates.

For **FREE** initial consultation including evenings and weekends call

Chris Nash on **01604 696977**

Accounts, Payroll, Book-keeping,
Self Assessment, Year ends etc.

 **CERTIFIED PRACTISING ACCOUNTANT**
20 Bedford Road East, Yardley Hastings, Northampton NN7 1HJ



*Streets Ahead Property
Lettings and Management*

Attentive and efficient Property Management

I currently manage a number of rental properties alongside a domestic cleaning service

Please refer to Google Ads for more details or contact me directly

My rates are very competitive

Proprietor Maxine Farrimond 07870 395 171

In association with Domestic Cleaners of Olney



brings you

Finance Matters

Protection levels hampered by incorrect perceptions

It is a well established fact that the level of protection in the UK is well below the level it should be. This has almost certainly always been the case and not only applies to life cover but also to critical illness cover and to policies covering incapacity through ill health. The gap between what is deemed to be the amount of cover we should have and the amount we actually have tends to differ from survey to survey. However, AEGON have estimated that it currently stands at £2.4 trillion or £100,000 per person (of those that should have it).

The Financial Services industry has highlighted this gap for years but there seems little sign of things improving. This begs the question – why do people not protect themselves more? I have often seen highlighted the different emphasis people place on insuring assets and usually the house and car are placed above themselves. A recent survey of 2,000 people by Drewberry Insurance* confirmed this as it showed 70% having Car Insurance, 65% House Insurance and just 35% Life Insurance.

Perhaps this anomaly comes down to perception. In the same survey, respondents were asked what they thought were the chances of an individual being off work for over 6 months due to ill health? The average response was 1 in 30 but the reality is 1 in 10. Similarly, they were asked what are the chances of an 18 yr old dying before age 65? The average response was 1 in 70 compared with the reality of 1 in 9. This displays a very poor understanding of the chances of needing life cover but possibly a very good explanation of why there is such a lack of it in place.

If you would like to discuss or review your level of protection then please call us. Initial meetings are without cost and we are happy to come to see you in the comfort of your own home. See our advert below.

This article does not constitute advice and should not be taken as a recommendation to undertake any course of action mentioned without consulting a relevant professional.

* - Drewberry Insurance Health & Protection Insurance Survey 2013

What would you like your retirement to look like?



A 65 year old male retiring at the end of 2012 would, on average, receive 56% less pension than in 1994, and a 65 year old female, 50% less.

The same research issued by Moneyfacts in early 2013 also shows annuity rates in the UK have fallen in 15 of the last 18 years and the reduction was 11.5% in 2012 alone.

If you wish to review your pension arrangements or you are approaching retirement, why not **contact Advison** to see how we may be able to maximise the benefit from your retirement planning.

Our financial advisers will help you to:

- ensure you have a clear financial plan for the future
 - provide protection and peace of mind for your family
 - make the most of your hard earned savings and investments
 - save for your retirement
 - minimise your personal tax liabilities
 - protect your estate for your beneficiaries
- ...and give you access to ongoing advice and support



Speak to the experts...

Speak to Advison now on 01908 285690

www.advison.co.uk

Advison Ltd is an appointed representative of IN Partnership the trading name of The On-Line Partnership Limited which is authorised and regulated by the Financial Conduct Authority. Tax advice is not regulated by the Financial Conduct Authority. Registered (England) No. 5009271

Treddeners
Quality Footwear NORTHAMPTON, ENGLAND

www.treddeners.com



BARKER
ENGLAND



January Sale 10% OFF with JAN10, available instore or online

TEL: 01604 696 080 sales@treddeners.com

Unit 6 The Woodyard, Castle Ashby Northampton, NN7 1LF



50 *for* 50

Before the last leaf falls instruct Jackson Waite to sell your property and you can become one of fifty people to benefit from a **50% reduction** in our fees. Call the Jackson Waite team on **01234 480232** or email info@jacksonwaite.co.uk and book a free, no obligation valuation and discover the true value of your home today.

ESTATE AGENCY AS IT SHOULD BE...



CALL US ON
01234 480232
all day | every day



DUE TO ITS PHENOMENAL SUCCESS JACKSON WAITE ARE EXTENDING THEIR 50 *for* 50 OFFER FOR A LIMITED PERIOD



Minerals Plan

We mentioned last month that the draft Minerals local plan was open for consultation. This was the first stage in developing a plan that as a mineral extracting authority, Milton Keynes has a duty to do. The first stage is to determine what level of minerals Milton Keynes needs to extract and then to decide on which areas extraction should take place. The Minerals Local Plan is not planning permission and any site put forward will still need to be granted planning permission at a later date. The plan spans at least 15 years so is an important document for guiding where future extraction should take place. As part of letting people know, a number of events were organised for the area including one at Lathbury 3rd December and Weston Underwood on the 9th December. Both meetings were well attended with people giving their views and also learning a lot about the process of the scheme and the proposals. This is not the last time that people can come and find out about the proposals, another meeting has been organised in Lavendon on 9th January. This will be a public exhibition of the plans from 5:30pm with a meeting where people can make their views clear at 7:30pm. The consultation closes on the 22nd January and the responses will then be considered with the plan then passing through further stages over the next 18 months before finally being agreed during the summer of 2015. We

will of course keep you updated on progress as it happens
If you wish to make any comments about the scheme or learn more about it, feel free to come along to the next consultation meeting in Lavendon or look on the Milton Keynes Council Website.

Road Junction Consultation In Olney

Since the traffic review of Olney over 5 years ago Milton Keynes Council has been gradually undertaking the priorities that came forward in that review. One such scheme was the redesigning of the junction at Yardley Road and the High Street, the other was the redesigning of the Weston Road/ High Street South junction. We mentioned the consultation evening in last month's article, where people could come along to look at the proposals and make comments so these could be taken into account with the schemes before and if they progressed. The evening was extremely busy with many people attending and giving their views which were mixed about the schemes. These will now be taken into account and changes made before the final decision is made as to whether they should be progressed or not. If they are progressed then it is likely that they will be done in the Spring.

The Salt Box, Lavendon

We have mentioned in this column a number of times the Saltbox site and the controversial planning application that was submitted for 9 houses to be built on the site. This application came before the Development Control

Committee in early December. In the run up to this we sought views from local people about what they wished the site to become. At the public meeting we held, the overwhelming majority supported development on the site provided that safeguards could be put in place to limit the development to just the current low density proposal. The danger was that this could just be the first in a number of applications to get more houses on the site. After this meeting the developer did offer those guarantees that are now linked to the deeds of the property held at the Land Registry which will restrict any future development. The danger of not doing this was that the site would be sold and then someone else would try again and again and again until something was granted. Some people were worried that this site would grant a precedent for other sites in the local area. The Development Control Committee were very clear on the reasons that they were granting this application and they include that it was a brown field site, was on a bus route, had been previously developed and had planning permission for use as a builders yard as well as the fact that it was adjacent to the settlement boundary of the village. This was not the last part of the application as now a detailed planning application will be forthcoming which will look to decide the exact design of the houses. Our very best wishes for a happy & peaceful New Year, if we can assist you in anyway please feel free to contact us on the details given on at our surgery which takes place on January 3rd at the Olney Centre from 7.30-8.30pm.



mkoil express deliveries

*As an independent, family run business we now offer
emergency domestic oil deliveries in your area!
We pride ourselves on a fast efficient, professional service
and will endeavour to provide the best customer care possible.
Run out of oil? Try us today!*

Hotline: **01908 551 499**

Out of Hours: **07843 35 55 44**

E-Mail: **info@mkoil.co.uk / www.mkoil.co.uk**

A division of Barton Petroleum Ltd





You're about to divorce.

You want a top lawyer.

Call us before your ex does.

Negotiating a settlement that lets you move on with your life should be a family lawyer's top priority. Ours are among the most experienced (and sought after) in their field. Our free consultations and flexible pricing options mean there's one less thing to worry about. Because isn't divorce stressful enough? Call us if you think we could help.

slatergordon.co.uk 0808 175 7741
Free weekly consultations at our Milton Keynes office

**Slater &
Gordon**
Lawyers

Let there be Light

MS

Newport Pagnell

Another year of planning and fundraising came to fruition on Saturday 30th November as the Christmas lights in Newport Pagnell were switched on for the 53rd year. It was Earl Beatty of Chicley who first gave the command for the first switch on back in 1960. Since then the lights have been organised entirely through volunteers, local business owners and a collective community spirit and I'm sure he would've been very proud to have seen so many people turn up this year and appreciative of the volunteers. This year marked the switch on of the new LED lights, which required a really big fundraising effort so well done to those who donated by sponsoring a bulb, buying raffle tickets, contributing to the street sleigh collections or coming to one of the fundraising evenings.





Olney Green

Burial Ground

**The Traditional Way ~
Funeral Directors**

- Independent funeral directors
- Personal care & guidance
- Pre-payment plans
- Memorials & Tributes
- 24 hour personal attention

01908 225222

**The Natural Alternative ~
Green Burial Ground**

- Private burial ground in beautiful countryside
- Trees instead of headstones
- Protected woodland for permanent security
- No maintenance or risk of neglect
- Family & 'DIY' arranged funerals

01234 241808

Within easy reach of Milton Keynes, Bedford & Northampton



The Funeral & Green Burial Company
Yardley Road, Olney, Buckinghamshire MK46 5EH
www.olneygreenburialground.co.uk



E. FENNEMORE & SON
YOUR LOCAL FUNERAL DIRECTOR
EST 110 YEARS
OLNEY
TEL 0845 894 6423
24 hour service

*A family business offering a caring reverent service
throughout Olney and surrounding villages*

Traditional and green funerals undertaken
Memorials supplied and erected

Orchard Wills Ltd
Member of the Society of Will Writers

**ISN'T IT ABOUT TIME
YOU MADE YOUR WILL?**

Mirror Wills £90 ~ Single Will £70
Office or Home Appointments Available

WE ALSO PROVIDE:
**LASTING POWER OF ATTORNEY &
SEVERANCE OF JOINT TENANCY**

01234 713938
WILLS PREPARED WITHIN SEVEN DAYS



Administration Clerk

Resort Fiduciary Services Ltd, an administration company based in Turvey have an immediate vacancy for an administration clerk.

A good working knowledge of Microsoft Office, Excel and Word is required, and an understanding of accounts would be beneficial.

Good inter personal skills required as part of the duties will be dealing with enquiries from clients and the general public, must be self motivated.

Office hours are from 9.30am until 5pm five days a week.

Please email your C.V to info@resortfs.co.uk for the attention of Andrew Horton

OLNEY TOWN COUNCIL



The Olney Centre, High Street, Olney, Bucks MK46 4EF

PART-TIME GROUNDSMAN

Olney Town Council is seeking to appoint someone to the part time position of Groundsman to assist in maintaining the open spaces throughout Olney as well as the maintenance of the various sports pitches and playing fields. The main duties involve grass cutting using ride-on mowers, hedge cutting, weeding, strimming etc

The post is for 3 days per week (22.5 hours) for 10 months per year. The council is flexible about which days of the week that the postholder will work.

The position is ideal for someone who is experienced in this field, or who has an interest in horticulture and is practical and willing to learn new skills.

The salary for the post is £17,597 per annum pro rata plus Local Government Pension Scheme

An application form and other details may be obtained from the Town Council (01234 711679) or in person at the Council Offices, The Olney Centre, High St, Olney, Bucks MK46 4EF.

Application forms must be returned to the Council Offices at the above address by noon on Wednesday 22 January 2014

Interviews are to be held on Wednesday 05 February 2014

Town Clerk: Mr Liam Costello
Tel: 01234 711679

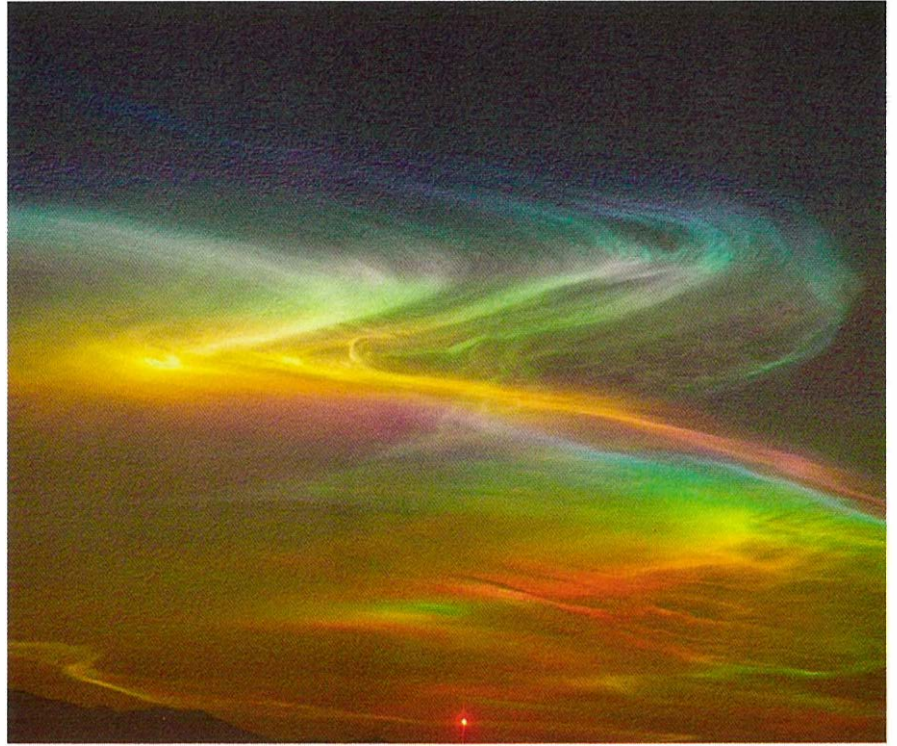
e: townclerk@olneytowncouncil.gov.uk – web: www.olneytowncouncil.gov.uk

Between winter and early spring are the best times for viewing the world-famous Northern Lights, or 'aurora borealis', and this year is no different. In fact, the best views in decades have been predicted for this winter season, and while seeing the lights can never be guaranteed, as something which features on many people's bucket lists, it is arguably worth taking the trip. While the Northern lights can sometimes be seen from Scotland, the best place to see them is Norway. During January the days are still very short, and although they start to get longer in February and March, there are still maximum chances of viewing the Northern lights in these months. Until April, there is a 90 per cent chance of seeing the lights on a clear day. The Arctic circle in Northern Norway provides the best chance of seeing the lights, as the Northern light belt hits the Lofoten Islands and then follows the coast all the way round. The swirling, magical shapes and colours of the Northern lights are breathtaking, and there is something surreal about seeing colours and shapes in the sky which haven't been put on by a man-made light show, but rather an amazing mystery of nature. There is, of course, a highly detailed scientific explanation for how the aurora borealis come to be, involving highly charged electrons travelling from the sun at millions of miles per hour, and the electrical and magnetic reactions which take place... something which can of course be researched further by those of you particularly interested! Or maybe you would prefer to watch and enjoy the magical Northern lights without knowing the details; perhaps the mystery is all part of the fun...

The Northern Lights

Predicted For This Winter Season

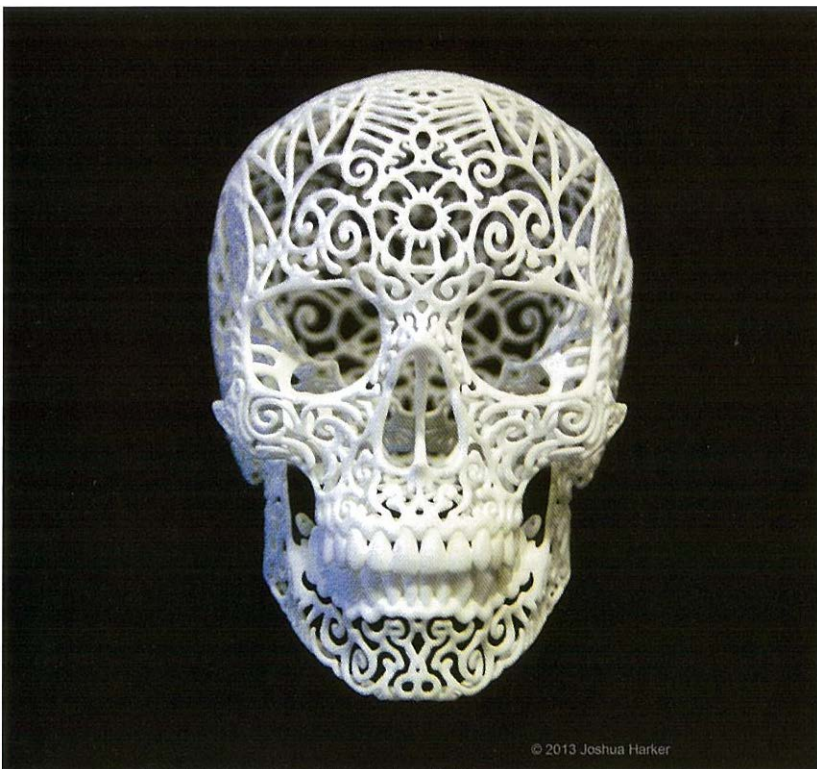
Sarah Wall



The Future is Here

Following the pace of technology

Sarah Wall



© 2013 Joshua Harker

3D printers, smartwatches and drones - technology seems to be moving faster than each generation can keep up. When you look back over the last few years and see the changes that have taken place, it makes you wonder how much will change again in the coming 10 years. You can now print a 3D product in the comfort of your own home, take photos and use your phone from a wristwatch, and now Amazon are saying we may have drones delivering our parcels in the next 10 years. It seems the thing of sci-fi films, and can be hard to believe what technology can now do for us. The only way seems to be to embrace it or get left behind- which would mean not being able to function the TV or in the future maybe even accept parcels. Despite the bad press technology in general tends to get; with terms such as 'invading our lives' and 'taking over' cropping up here there and everywhere, the truth is that if all technology were to go down, we would be pretty much non-functional. This 'what if' scenario is a slight worry with the possibility of everything coming crashing down, but resting in the assumption that this is (hopefully) unlikely, the wonders provided through technology are amazing. The technology allowing keyhole surgery, for example, along with countless other healthcare advances, are simply lifesaving. As a result, it is impossible to put down the effects and positives of technology, rather the advances need to, somehow, be kept up with. I suppose there will come a time when the changes of technology come to a halt... although on second thoughts, that is seeming less and less likely by the minute! A new announcement from Google is 'moonshot' robots, which will be used in the manufacturing and retail industries. Many jobs are being taken over by machinery nowadays, so perhaps where people in the past were coal miners, the jobs of the future will be robot fixers...how fun.

January Neutering Promotion

The overpopulation of cats in Milton Keynes is becoming a big problem, and each year the Milton Keynes and North Bucks RSPCA have to deal with hundreds of unwanted kittens. The branch currently has 160 cats and kittens in its care, and with no room for more, this inevitably means having to turn others away. In a bid to help combat this issue, the Milton Keynes & North Bucks RSPCA are offering a neutering promotion, starting on the 6th of January, where benefit claimants can neuter their female cats for just £10. The decision to neuter only female cats was made following research which showed that neutering male cats had less impact on the population than neutering females. The RSPCA stresses the importance of neutering female kittens as young as possible, as they can fall pregnant as early as five months old, and after that can become pregnant again very quickly. The alternative is that people simply give their unwanted kittens to the RSPCA, but the Milton Keynes and North Bucks RSPCA is all too often full and stretched to breaking point. The hope is that by tackling the issue of the overpopulation of cats and kittens, there will be less unwanted animals ending up in need of care. For more information on the Milton Keynes & North Bucks RSPCA Female Cat Neutering Programme, please call the dedicated hotline on 07928 596182. If you don't get through at first, please try again, please do not call the local branch, as they will be unable to assist you. The promotion will continue throughout January until the allocated funds run out, but you are encouraged to book in sooner rather than later, as in 2011 funds run out in just three days. If you are interested in fundraising or offering financial support, please get in touch via the hotline.



Happy Birthday!

One of our lucky readers, Clare Taylor, had her photograph on her own personalised cover of the Phonebox magazine last month. Her friends had a special cover produced in secret, to celebrate her 40th birthday! Clare thought her photo had gone out to all 22,000 homes in the area for a full 24 hours, before her Dad finally told her the truth!



Phonebox Walk

Graham Edwards

This is another easy and varied walk, clockwise from the Newport Road lay-by at Prospect Place on the A509, one mile out of Olney on the left, heading towards Newport Pagnell/Milton Keynes.

Duration: circa 5 miles about 2 hours, mostly flat, occasionally undulating with 11 stiles. Includes great views across the Ouse valley towards Western Underwood, through Emberton Country Park, and on across the fields to the village of Petsoe End.

There are refreshments en-route at the public house in Emberton, and then afterwards in cafés etc in Olney.

Rambling around Emberton

1 Walk to the central entrance to the lay-by and carefully cross the A509, you will see a finger post pointing through the hedge to a stile, with a bridge on the other side. Once through, head diagonally right across the field, to another stile in a hedge near the bottom left hand corner of the field, the path now leads down to a stile (it is the left hand one) and then a metal kissing gate that leads in to the top of Gravel Walk. Follow this down to the High Street and turn left.

2 Keep to the left at the clock tower, into West Lane, and follow this for a half of a kilometre or so and turn left just before the allotments at Westpits that are in a hollow in the ground. Follow the track past the houses on the right, and then where it bears left by Blackwell Spinney (keeping the spinney on your left) take the right hand main trail and continue up the track to a T junction (by an oil tank). Turn right here and follow the path for a kilometre, to where the path passes through a gate into the static caravan park within Emberton Country Park; leave the static park by the main entrance and turn left into the main part of the park.

3 Follow the path with Grebe Lake and Heron Water sailing lake on your right, turn right onto the path just before Otter Pool, and walk between the two lakes. Once through, cross the park's perimeter road and leave the park by a gate in front of you. Turn immediately left, and in a few metres cross the A509 (caution here) to a farm gate with a stile to the right (there is a walkers sign post here), once over, continue with the hedge on your right, to a stile with a bridge. Once through turn left and walk up through the field, to a stile a few metres from the hedge on the left.

4 Cross the next field diagonally to the right hand far corner, pass through into the next field and turn right, keep the hedge and some rough ground to your right for about 250 metres, to where the path goes through the hedge to the right, turn left here. Follow the path with the hedge on your left for 500 metres or so, and then cross the Clifton Road (caution here - blind bend) to a stile in the hedge. Follow the marked path through to a stile, once over, cross the drive of Rectory Farm and go through the gate.

5 Keep the paddock on your left, then head diagonally right to a large gate and then through the next small field to a stile and then across a further small field to a kissing gate. Cross the Newton Road and follow the lane opposite up into Petsoe End, passing Hill Farm on your left. Shortly the lane bears right and then left, just before the stone well and seat built into the wall on your right, there is a finger sign on the right to put you onto a stile in the hedge (the ground is very uneven once you are over the stile).

6 Keep the hedge to your right to a further stile in the corner, this leads into another field with rough ground edges, again keep the hedge on your right and follow this path for about 100 metres to the corner of Hollington Wood, turn right here to keep the woods on your left. In 100 metres or so at the top of the woods, turn left through the hedge and then immediately right, keeping the hedge on your right, then through in to another field to return to the top of the lay-by at Prospect Place and then return to your car.

We hope that you have enjoyed this walk, it has some fine views, particularly on a clear day.

We would like to thank our dear friends Julie and Alan Smith for showing us this great walk.

It should be noted that between points 1,3 and 4 and 5 that there is the possibility of sheep, horses and various farm animals, so dogs should be kept on a lead at these times.

Hollington Wood is a private woodland, the woods are glorious in springtime with

bluebells, however, there are permissive paths to walk along, please respect this if you visit.

The idea behind these occasional walks is to encourage us to visit our neighbouring villages and to enjoy their surrounding countryside. The different seasons can greatly affect the scenery, with delightful flowers in the meadows and woodlands in springtime, wild fruit in autumn, and crisp, clear, frosty days in winter can often increase the distance you can see, as well as blowing away those winter cobwebs.

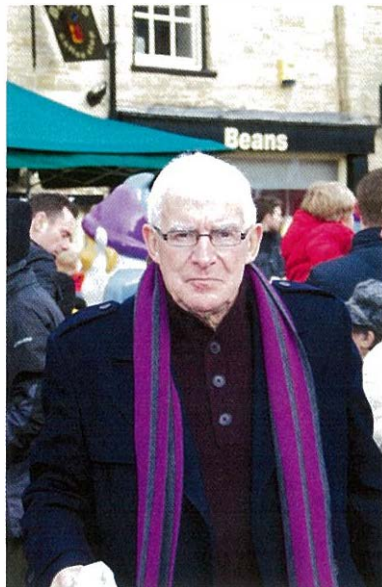




Dickens of a Christmas

The Biggest Yet

Dickens Day in Olney was held this year on Sunday, 8th December. The weather was cool and crisp, as befits a traditional Victorian event, but the sun was out and there were blue skies to enjoy. With numerous stalls, selling things from mulled cider and wine to Christmas gifts, and numerous tombolas with prizes to be won, everyone had lots to do. The stallholders were all dressed in Victorian outfits, as were a number of attendees, adding to the Victorian feel of the event. Children were entertained by fairground rides, a Punch and Judy show and, of course, having a chance to meet and feed the reindeer in Fountain Court. The town saw record numbers of visitors, and traders reported a brisk day's trading.





MY YEAR IN FOOD

A quick look back at the foodie highlights of 2013

JANUARY: The Maltings, Stoke Goldington
Just recently opened when we visited - a friendly, intimate restaurant with posh pub grub. Photo shows beef stew.

FEBRUARY: The Bull, Olney
Amazingly for a Foodie, I only started eating mussels this year. Choose from six sauces including delicious Moroccan.

MARCH: Robinsons Wine Bar
Seriously - two course meal for £3.10. Every Thursday. Soup to start, and on this occasion, a fabulous belly pork.

APRIL: The Bell and Bear, Emberton
I do like a good pie. And these were proper pies, with pastry all the way around. Do hope it is an annual event.

MAY: Breakfast at Home
A home-cooked breakfast with Amazing Grains bread bought the night before from the pub. Always a special treat.

JUNE: The Three Fyshes, Turvey
A fabulous meal at this restaurant, with a nice summers evening walk to get there. Pictured, confit of duck.

JULY - Sportsman, Whitstable
Probably the foodie highlight of the year. Seaside pub with posh, non-pretentious food. Photo: carrot and mozzarella salad

AUGUST - Cornish Beef Festival, The Bull
Nothing like a beer festival, but when accompanied with Cornish pasties and home-cooked sausages, it gets better still

SEPTEMBER - Big Olney Food Festival
Too many fabulously lovely things to tempt the taste buds on this buzzing local night. Pictured Paella

OCTOBER - Malt Masterchef, The Bull
A third mention for the Bull, but each one so very different. This time a whisky and food matching session. Photo: venison

NOVEMBER- Asha's, Birmingham
A special mention for this superb Indian restaurant in the centre of Birmingham. Spicy battered fish and the best Biryani ever

DECEMBER- Dickens, Olney
Streetfood, Olney style. A bun too big to get your mouth round packed with turkey, stuffing and cranberry sauce, all washed down with mulled wine.



January



February



March



April



May



June



July



August



September



October



November



December

p. foodie

@phoneboxfoodie

facebook.com/phoneboxfoodie

phoneboxfoodie.wordpress.com

DrDobbin Nutrition

**Do you want to lose weight in the New Year?
Choose the correct diet for your sport?
Improve your health?**

When it comes to nutrition, everyone has different requirements. At DrDobbin Nutrition you are treated as an individual. You will receive a dietary and lifestyle plan appropriate for your individual needs.

**Special offer for Jan/Feb 2014
£10 reduction on 1st consultation**



Ring today for an appointment

07942 005408

www.drdobbin.co.uk

robin.dowswell@gmail.com

Robin Dowswell, Nutritional Therapist Dip ONT, mFNTF



FOOD HYGIENE RATING



Mediterranean Restaurant

**Buy One Get One HALF PRICE
Any Pizza or Pasta
Takeaway Only
(cheapest half price)**

LUNCH MENU

ONE COURSE ~ £5.00

TWO COURSES ~ £7.50

- ★ Pizzas, Pastas & Grilled Food ★
- ★ We Accommodate Large Parties ★
- ★ Reservations Taken ★
- ★ Takeaway Service Available ★

Phone **01234 714600**

4 The Galleries, Market Place,
Olney, Bucks MK46 4EA

Monday - Saturday 11.30am-2.30pm & 6pm-10pm
Sunday 12-2.30pm & 6pm-9pm

We start the NEW YEAR with exciting NEW MENUS for both Restaurant and Bar

Follow us on
Facebook The-Malting-House
Twitter @TheMalting

For reservations and enquiries Telephone: 01908 551777 |
www.themaltinghouse.com

FOOD HYGIENE RATING



We would like to wish everyone a

Happy and Prosperous New Year

and offer a **Special Promotion** for **January**
with **Two Main Dishes** for the **Price of One**
from our new January Menu

Our new **"Seniors Luncheon"** continues throughout 2014 - at **£9.00 all inclusive**. Available Mon - Saturday.

Our **Theme Nights** continue. **Taking bookings now.**

Our **Acclaimed Sunday Lunch** is served 12.00 noon – 9.00pm.



Opening hours

Restaurant – Sunday to Saturday

Lunch time menu 12.00 noon to 2.30pm

A la carte menu 6pm – 9.30pm

Bar 11.30am – 11.00 pm

Snacks available:

Sunday – Saturday 11.30am – 2.30pm

& 6.00pm to 9.30pm



The Malting House

66 High Street | Stoke Goldington
Newport Pagnell | MK16 8NR



Domestic Cleaners of Olney
Simply A Better Class Of Clean
 Weekly / Fortnightly
 Providing smartly uniformed and trained staff
 to care for your home
 Help to secure local jobs by using your local businesses

Please refer to Google Ads for more details or contact me directly

Proprietor Maxine Farrimond 07870 395 171



In association with Streets Ahead Property Lettings and Management



Established 10 Year Business

Ironing Service Available

You'll be able to relax knowing your home will be
 cleaned by a friendly team who are honest, reliable and
 trustworthy.

Call: 07921563070

All Cleaners **CRB** Checked, References Available

We clean your oven... so you don't have to.

Hate cleaning, but would love a clean oven?

*Have your oven, hob, extractor or
 microwave professionally cleaned*

Complete
 Aga valet
 offered.

*We restore your oven to near showroom
 condition*

*All our technicians are fully trained &
 insured*

TEL: 01234 731314

steve@magicovens.co.uk

www.magicovens.co.uk




FUSCHIA
 CLEANING SERVICES LTD

**Quality Carpet Cleaning
 to IICRC standards**

**Bio-friendly cleaning an option at no
 additional cost**

Call: 01234 860 618 / 07583 221 050
fuschiacleaning@hotmail.com
www.fuschiacleaning.com

Proud to be cleaning contractors for **Marcus Jordan & Co**
 Lettings & Property Management

clean ops

NO ONE CLEANS UP LIKE CLEAN OPS

A QUALITY & PROFESSIONAL SERVICE

- Regular or one off clean
- Spring cleans (not just for spring)
- Vacuuming & dusting
- Post-home improvement
- End of tenancy cleaning
- Carpet Cleaning
- Move in/out house cleaning
- Weekly, fortnightly, monthly
- Tailored to your requirements
- **FULLY INSURED & CRB checked**

Please call
M: 07792 913 089
T: 01933 666 917
clean-ops@live.com
follow us on: facebook.com/cleaning.ops




Marvellous Muffin Breakfast Deal

1 Savory Muffin with a choice of two toppings
 (Bacon, Sausage or Egg) and hot drink for £4.50
 Served Monday to Friday 9am to 11.30am



Buy one get one FREE
 on Teas, Coffees, Hot Chocolates
 and Refreshments (Excluding Alcoholic drinks)
 Not in conjunction with any other offer. cheapest free.

Available
 8.45am to 10am and
 3pm to 4.30pm
 Monday to Friday

Warm up
 this Winter!

01234 713 925
www.courtyardbrasserie.co.uk
 Rose Court, Market Place, Olney, Bucks MK46 4BY

Paellas d'Olney started in September 2012 as a hobby after cooking paellas for friends and acquaintances at parties and BBQs. Following my passion for cooking paellas I decided to set up Pd'O in order to offer the Olney community the chance to try this exquisite dish and expel some existing misconceptions about paellas:

Although the "paella" is known as the traditional Spanish dish, it originates in the Valencia region, where I come from, because the "bomba" rice is grown there around the Albufera Lake.

The paella does not contain peppers, peas or indeed Chorizo! It is a peasant dish and its original recipe contains rice, saffron, tomato, chicken, rabbit, runner and butter beans, artichokes (when in season) and occasionally snails. The seafood paella developed later. The paella (also the name of the flat pan in which it is cooked) as we know today is a considerably recent recipe originating in the late nineteenth century and adapted through the years from Arabian recipes.

For Valencianos, the paella is a social event as much as a meal, any friends or family gathering would not be complete without a paella. They are normally cooked in wood fire although, in recent times, it is customary to order from restaurants or specialised outlets and this is the concept we want to bring to the people of Olney. The paella is not just an exotic dish to be eaten when on holidays or at events, it is the perfect accompaniment to any social gathering.

We offer Take Aways where you take the whole pan home, as it is the tradition to eat from the pan with a wooden spoon. We also come to you and cook at private events, BBQs, etc... or cook at public and corporate events. For more information on prices, conditions and a little history on paellas and rice go to www.paellasdolney1.com, alternatively you can contact us on 07920 791 833 or paellasdolney@hotmail.co.uk

Juan Valverde

Out Of This World Paellas



17a High Street, Olney,
Bucks MK46 4ED

館餐海上

OLD SHANGHAI RESTAURANT

Specialists in Cantonese, Peking and Szechuan cuisine



Tel: 01234 240195
Tel/Fax: 01234 240260



Come celebrate the CHINESE NEW YEAR

on Thursday 30th January 2014

~ BOOKINGS NOW BEING TAKEN ~

Visit www.oldshanghai.co.uk

Sheridan Clarke

Many Congratulations to Kimberley Clarke, 21, who has graduated with a 1st Class Law Degree from the University of Hertfordshire. The graduation ceremony was held at St. Albans Cathedral. We wish her well in the future.

A Path less Travelled?

Anon

I was just curious to know why the foot path along the stretch of the A509 from the Filgrave turning and down towards Emberton was being dug up and re-surfaced. There is probably a legitimate reason printed somewhere that I have failed to read. Having been one of the few walkers, I would say, to have travelled this path since its birth, I am stumped. Compared to some roads that will no doubt need repairing in the coming winter months, this particular footpath certainly didn't resemble one found in down-town Beirut. Unlike the state of some of our roads before they have damaged umpteen vehicles. While I am in moaning mode, why was such a high kerb ever built along side that very same stretch of road? A car could have been easily pushed onto the grass verge if broken down but now long tail-backs can be enjoyed by motorists as on-coming traffic never likes to give way. Who can blame them as once that starts everyone wants to get passed. Pity the stranded driver being honked at. I'm sure someone can answer my first moan and maybe the second.



DomestiCats
 Better things to do with your time?
 Let us do the hard work for you!
DOMESTIC CLEANING SERVICES
 ✓ Reliable and Fully Insured
 ✓ Weekly, Fortnightly, Monthly
 ✓ References Supplied
0845 3105326
 domesticcats@sky.com

NOW RECRUITING

Olney Cleaning ANGELS Limited
 Due to expansion we are now recruiting Lady Cleaners
YOUR OWN CAR AND A PHONE IS ESSENTIAL
 For more info call
07508 277679
07917 865460
 Email info@olneycleaningangels.co.uk
 www.olneycleaningangels.co.uk

Free WI-FI
Cafe Brio
 Pizzeria & Restaurant
FRESH PIZZA, PASTA & SALADS
Have you tried our larger pizzas?
 Enjoy more of our perfect base and tasty toppings!
Lunch specials available from just £3.95,
 including paninis, ciabattas, wraps and lighter bites!
 Relax with a morning coffee.
 Why not try our premium Portioli coffee?!
 Afternoon teas served daily.
 Visit our website www.cafebrio.co.uk
 for special offers, full menus & our quarterly Jazz Programme.
LIVE JAZZ every Monday -
 Free for diners!
 Open 7 days a week 11am - 11pm
 36A Market Place, Olney,
 Buckinghamshire, MK46 4AJ
 Telephone: 01234 717000
www.cafebrio.co.uk

Hand me in on arrival!
Cafe Brio
 Pizzeria & Restaurant
2 MAINS FOR £10 !!
Two main courses for £10 with this voucher (see restaurantfordetails)
 Food offer available both in restaurant and for take-away orders
 Offer only valid when a printed voucher is presented to your server prior to your order
 Valid from 1st - 31st January, 2014

Dougall

Is it just me, or am I becoming a grumpy old man? I have to use Station Road from Richmond Way a minimum of four times a day, 6.30am going out, and 7am coming back, then again at 5pm going out, and coming back at approx. 5.45pm. I do this Monday to Friday and sometimes at weekends.

It seems that nearly every time I approach the Station Road traffic lights on green, from either direction, the lights turn to red and I have to wait for a few minutes to get the green. Nine times out of ten, no car comes from the other direction, so why do they change against me? Both sides of the lights have sensors, so they know the status of both sides of the lights.

Is there a reason for this crazy sequence? No school children are about and hardly another car that early in the morning.

We are all busy people and I appreciate that it is only a delay of a few minutes in both directions, but surely if the lights are green and there is no reason to change, then they should stay green in my favour! I thought traffic lights were supposed to help the traffic to flow!

The people living in Station Road must get very fed up with the noise of idling engines first thing in the morning, waiting for the green light.

On my early run, I have twice had other frustrated vehicles jump the lights from the opposite direction, when the lights have changed green in my favour. This really does wake you up!

Sorry to be grumpy and thanks for a great magazine.





CADMAN
FINE WINES
www.cadmanfinewines.co.uk

We specialize in classic labels from famous names alongside wines suitable for great value everyday drinking, entertaining and special occasions.

Order by the bottle or by the case.
Local orders delivered free.

Our expert team are here to share their knowledge and enthusiasm for fine wine.

Visit our website to see our latest offers and to view our exciting range of wines, including Champagnes and Port.

Tel: 0845 121 4011 | www.cadmanfinewines.co.uk
Email: sales@cadmanfinewines.co.uk
6 The Woodyard, Castle Ashby, Northants NN7 1LF

ANY OLD IRON

FREE COLLECTION OF ALL METAL

KEEP SAFE use ONLY licensed collectors

- Know who is on your property
- Help removing old appliances
- Fridge freezers taken at cost
- No waiting for the Council
- Registered Metal Recycler

LOCALLY BASED

Please Call David
07554 661449







21st Century Stoves

Put the heart back into your home

Local Business

15% Discount on all stoves
Discount Coupon Code: POSTBOX-2014

Large Range of Cast Iron & Steel Stoves

Flue Liners & Kits

Installation

Logs

STOVES FROM £249.00

Visit our website for full product range

Showroom

Tel: 01604 891997
www.21stcenturystoves.co.uk

£20,000 raised

Courtyard Brasserie

The annual Christmas Charity Ball and Auction celebrated its sixth anniversary at the Courtyard Brasserie in Olney on Saturday 14 December.

This year's event raised money for the British Heart Foundation, in memory of Catherine Roberts, who died earlier this year. The amount raised on the evening raised the total over the last six years to over £20,000!

Organisers Stephen and Shona Bateson and Ross and Sarah Bannerman would like to thank everyone who supported the event, including those who attended, those who donated auction prizes, all the staff at the Courtyard, and New Leaf Florists who have kindly donated the table decorations for the last six years. The highlight of the evening was an extended set by local band Error 404, who were playing at the event for the third successive year.

The auction was a huge success, with auctioneer Richard Beardshaw persuading guests to bid for several lots, including vouchers for local restaurants Amaya and Four Pillars, signed football and rugby shirts, VIP tickets to Autosport International, and tickets for a West End Show with Dinner.

Vision promoted

Olney youngster's seahorses win prize

Little Lyla Cheetham from Olney has won a town-wide art competition aimed at raising awareness of eye health thanks to her vivid interpretations of stingrays and seahorses.

The talented five-year-old impressed judges with her picture of an aquarium in a competition organised by Davis Optometrists, based in the town's High Street.

The Olney Infant Academy pupil was recapturing a family visit to Brighton in the Schools Colouring Competition, staged to raise awareness of eye health and the importance of regular eye examinations for children.

Lyla, who received a £15 book voucher and a colouring pack as well as £100 worth of book vouchers for her school, said: "I was over the moon and proud when they told me in front of the class. I did a picture of the fish and seahorses and stingrays we saw when we went to the aquarium."

Mum Poppy said: "Lyla's dad wears glasses so we know how important it is to have your eyes tested. Lyla goes with her dad." Kim Durden, a partner optometrist at Davis Optometrists, said: "A recent NHS report revealed the number of children (under 16) who have had an eye examination in the past 12 months was at a 10-year low, with just 19 per cent having had an eye examination in 2012/13.

"Poor eyesight can have a significant effect on a child's ability to learn and on their behaviour yet it often goes unrecognised. The sooner that vision problems are detected the better the outcome."

The competition was open to primary school children in Olney. Lottie Barwick won a colouring pack after being picked as the winner from Emberton School, but lost out narrowly to Lyla as the town's overall winner. Entries were showcased in the Olney branch of Davis Optometrists.



Beautiful timber windows tailored to meet your needs



Energy efficient wooden windows

Casement windows, sliding sash

Bi-fold, French & entrance doors

Repair work also undertaken

Replica timber range also available

Built from sustainable sources

Fully paint finished in any colour

Secure by design, traditional beauty

10 yr Insurance Backed Guarantee



NEWLEAF
TIMBER WINDOWS
www.newleaf timber windows.com

01933 213344
enquiries@newleaf timber windows.com
07720 626165

OLNEY CARE SERVICES Ltd CARE SUPPORT WORKER REQUIRED



DUE TO AN INCREASED DEMAND FOR OUR SERVICES

We are looking to recruit, reliable, caring, care support workers to join our team. To provide personal assistance and support to our clients who live in their own home

- VARIOUS FLEXIBLE HOURS AVAILABLE
- HOURS BETWEEN 7-3 / 3-10
- ALTERNATE WEEKEND WORKING REQ
- CAR & MOBILE PHONE ESSENTIAL
- GOOD SOURCE OF INCOME
- INCREDIBLY REWARDING

FOR FURTHER INFORMATION & APPLICATION FORMS

TELEPHONE: 01234 241655

Please forward Application forms & CV to:

Olney Care Services Ltd

17 HIGH STREET, OLNEY, BUCKS, MK46 4EB

Email: OLNEYCARE@BTCONNECT.COM



Letter

Philip, Hollington Wood

You may recall that in my last circular (reproduced in the December issue of Phonebox magazine) I told you about my planning application for a wind turbine. We are now nearing the end of the public consultation period and, not unexpectedly, the objections significantly exceed the supporters. What surprises me is that, apart from the submissions of my neighbours, the Souls, no one I know personally has submitted a comment. I am not seeking to influence you in any way but I am asking you to make your views known. This is an important element in my business plans for the management of the wood so I think it only right and proper that you who have some form of relationship with the wood should help influence the planning process, whether or not you support my plans. You may be sceptical but my renewable energy consultant tells me that he had a scheme in Aberdeenshire approved on the back of substantial public support and presumably the converse is also true!



Olney Pilates Studio
O P S

BODY CONTROL PILATES
CERTIFIED TRAINER

Wishing you all Happy New Year from
Olney Pilates Studio.

What's your New Years resolution? Why
not try Pilates? New **BEGINNER CLASSES**
starting in the **NEW YEAR**

Contact Heather 07818 441691/01234 241427
Email: info@olneypilatesstudio.co.uk

Sketch
PROPOSAL
Riba Chartered Architect

01234 712 015
07724 879 060

www.sketchproposal.com

The Olney Osteopathic Surgery
In Association With
Olney Osteopathic Surgery

Baby and Children's Clinic **OSTEOPATHY** Cranial Osteopathy

Naturopathy ← **Olney Osteopathic Surgery** → Hypnotherapy

Reflexology Rehab Pilates Acupuncture and Dry Needling

OSTEOPATHY

Fiona Cockings-Mason D.O., M.R.O. Director
Sally Guest BSc. (Hons) Ost. BSc. (Hons) Sp. Sci
B. Olivia Munnelly BSc. (Hons) Ost. DO MRN
Linda Wardlaw DipHPsych HPD, DipNLP, Clinical Hypnotherapist and Hypnobirthing practitioner

**First Floor, 9 High Street
Olney, Bucks MK46 4EB
Telephone 01234 712003**

See us at www.olneyosteopathicsurgery.co.uk
E-mail info@olneyosteopath.co.uk

Pancake Race

Prizes

1st Prize: 2 Tickets to the RBS 6 Nations Rugby Wales v Scotland match at the Millennium Stadium, Cardiff on Saturday 15 March 2014. Kindly donated by The NatWest Bank, Market Place, Olney

2nd Prize: 2 Tickets to the Rugby Union match England v Barbarians at Twickenham on Sunday 1 June 2014 together with a Rugby Ball signed by 3 England Players kindly donated by The NatWest Bank, Market Place, Olney

3rd Prize: 3 Executive Tickets to the Premiership Football Match on Saturday 29 March 2014 at Old Trafford between Manchester United and Aston Villa kindly donated by Alistair and Tracey Scott of Captain Carpet Home Farm, Warrington Road, Olney

4th Prize: 4 Tickets incl. Dinner for Olney Jazz Club's Tuesday 1 April Event at The Carlton House Club kindly donated by The Carlton House Club, 38 High Street, Olney

5th Prize: £50 Voucher to be spent at Allen's & Janey's kindly donated by Allen's & Janey's, 5-6 Market Place, Olney

6th Prize: 2 Tickets for Tour of Hopping Mad Brewery incl. a Fish & Chip Supper kindly donated by Hopping Mad Brewery, Yardley Road, Olney

7th Prize: Ready Steady Cook classic 3 piece Cookware Set kindly donated by Imperial International Ltd, Leicester

8th Prize: Sunday Lunch for 2 with a bottle of house wine at Donzella kindly donated by DONZELLA, Stanley Court, Olney

9th Prize: Framed Print of Olney kindly donated by Alan Richardson

10th Prize: Set of 6 "Blenheim" Hand Cut Italian Lead Crystal Wine Glasses kindly donated by a Member of the Congregation of St Peter & St Paul's

Donzella

21st Anniversary



Happy 21st Anniversary to Donzella, we wish them continued success in the future.

Countryman Dog Training
Putting **You Back In Charge**

Specialist Remedial Dog Training for:
Aggression issues, pulling at the lead, destructive or embarrassing behaviour, disobedience, jumping up.

Fast results
from a Professional Trainer with over **20** years experience.

Foundation Training for Puppies: Get started on the right path!
Training available individually or through the Puppy School

Call Duncan on 01908 511192 or 07525 339033
Email duncan@countrymandogtraining.co.uk

Fluffies
Dog Grooming

NOW OPEN IN LAVENDON

IS YOUR SCOOBY DOO SMELLING A BIT?
WHY NOT BOOK A BATH AND GROOM?
BATH & FULL GROOM/CLIP/CUT.
YOUR PET IS GIVEN AN "MOT". THOROUGHLY CHECKED FIRST
THEY ARE THEN DRIED, CLIPPED & CUT TO THE STYLE THAT YOU HAVE REQUESTED.
OPEN MONDAY-FRIDAY 8.30AM-5PM; SATURDAY 9AM-1PM
WE ALSO PROVIDE A COLLECTION/DROP OFF SERVICE WITHIN 5 MILE RADIUS OF LAVENDON.
ALL TYPES OF DOGS WELCOME FULLY INSURED PREMISES
Tel 01234 712173 / 07741676315

SUSANNE STIMSON
Traditional Upholsterer

- Antique restoration and modern upholstery
- Restoration and repair of leather upholstery
- Replacement cushions
- Fabrics and trimmings

For advice and estimate please call
01604 675488
07837 565029
email: susannestimson@hotmail.com
MEMBER OF THE GUILD OF TRADITIONAL UPHOLSTERERS

Charlesberry

Charlesberry
Kennels & Cattery
 Sherington Rd, Sherington Bridge,
 Newport Pagnell MK16 9JA
email@theKennels.com
01908 612222

PROFESSIONAL PET CARE

- Vet Recommended • Qualified Staff •
- Collection and Delivery Service •

Guest of the Month: Bonnie

www.theKennels.com

Absent Friends

PET AND PLANT CARE

Your complete home visiting service

Call Barbara Wyld
01234 713835 (Olney)
Est. 1994
www.absent-friends.co.uk

Well, we've had a busy month again. At the end of November we had a stall at the Christmas Lights Switch-on Day, and this year the weather was kind to everyone – a mite chilly but no rain! Once again our members came up trumps with cakes galore – all of which were sold on the day. Many thanks to all those who spent time baking, and also to the hardy souls who came along to man the stall during the day. Everyone had a good time and the lights looked lovely. In early December six of our ladies attended Olney WI's Christmas Party where we enjoyed watching a magician perform some amazing tricks, whilst telling us about various tricks and illusions throughout the ages. Afterwards we enjoyed a very tasty supper, and two of our group were lucky enough to win raffle prizes. Many thanks to the Olney ladies for a most entertaining evening. Instead of our usual evening meeting, we decided to go out for lunch this month, and so it was that 12 of us travelled to the Chester Arms at Chicheley. We occupied a large table at one end of the dining room, and enjoyed a delicious meal, pulled crackers, and generally had a good time (hope we didn't disturb the other diners!). A 'Secret Santa' present swap followed, before we all wended our way home feeling comfortably full and looking forward to next year's programme of events and speakers. Newport Pagnell Women's Institute meets on the second Tuesday of each month at 7.30pm in the Royal British Legion Club, and is always delighted to welcome new members. Our January talk is entitled 'Dead, Buried, but not for long...' – sounds intriguing. For further information please call Evelyn Mison on 01908 615630 or just turn up on the night.

Newport Pagnell Archery Club was established in 1968 and is the largest and oldest club in the area. We meet all year round at our various venues, indoors from October to March in Newport Pagnell and Wolverton, and outdoors at a dedicated site at Simpson throughout the year. Our club has had several members that are Buckinghamshire County Champions in both indoor and outdoor disciplines of the sport.

We have both junior and senior members, and new members are always welcome, we also host beginners' courses and these are held regularly. During the 80s and 90s, three of our members were in the British Paralympic Team, and have accumulated medals from three Paralympics, 1980, 1988 and 1992. In November this year, a former paralympian, Valerie Williamson, was elected President of Newport Pagnell Archers and also President of Buckinghamshire Archery Association

If you wish to know more information please go to www.newportpagnellarchers.co.uk or email Louise Chamberlain secretary@newportpagnellarchers.co.uk for further information.








**Tickford Street
Newport Pagnell
Bucks**

01908 611637

www.astonlee.co.uk

Service Day and Night

Helping you to do the best for your pets

NEW ON LINE SHOP AVAILABLE VIA OUR WEBSITE

Cruciate Ligament Surgery in Dogs (knee surgery).
High success rate. Dogs seen from the local areas as well as longer distances such as London, York, Wales, Devon, Kent.'

Puppy or kitten pack = any two primary vaccinations, plus microchip + 4 weeks' pet insurance + worm and flea treatment + a 1.5 or 3kg bag of Hills food all for the inclusive price of just £60 inc vat

24 hour EMERGENCY SERVICE and **24 hour NURSING** on our premises by our own team!

We are the ONLY Hospital in the MK area who provide this Fantastic Service.

It is solely manned by our own Clinical Team ensuring that your pet receives the best care!

Full Medical and Surgical Services
inspected to Veterinary Hospital Standard
by the Royal College of Veterinary Surgeons



**INVESTORS
IN PEOPLE** | Bronze



Willow Healthy Pet Club

Budget for your pets health care at an affordable monthly price

Our club provides your pet with:

- ✓ Annual booster vaccinations
- ✓ Vet health checks twice yearly
- ✓ Year round flea prevention and worming treatment
- ✓ Discounts on other selected services and products



PLUS
£1 discount per month for every additional pet registered



2 Willen Road, Newport Pagnell, Buckinghamshire MK 16 0DF

01908 610 982

5 High Street, Olney, Buckinghamshire MK46 4EB

01234 711 473

www.willowvet.co.uk



[/willowveterinarycentres](https://www.facebook.com/willowveterinarycentres)



[#willowvetgroup](https://twitter.com/willowvetgroup)



Oakham Garden Services



Hedge trimming, shaping and reducing

Over-grown gardens restored

Small tree removals

Gravelling

Planting

Garden clearance and general tidying up

Cutting back and pruning

Weeding

Lawn seeding and turfing

Border restoration

Grass cutting

Regular garden maintenance and much more...

~ All carried out professionally ~ No job too small

MOB: **07745 428322**

TEL: **01933 663247**

Based one mile from Olney

P.J.C. TREE CARE

Est. 2002

Domestic & Commercial • Local Tree Surgery Company

Services include:

- Crown reductions, pollarding, felling & more
- Hedges, trimmed, reduced & shaped
- Removal of dangerous trees
- Fruit tree pruning
- Stump grinding
- Complete site clearances
- Re-planting/re-cycled arisings
- Firewood/woodchip

19 YEARS EXPERIENCE
IN ARBORICULTURE &
FORESTRY INDUSTRY

£5 million Public Liability / Full NPTC Qualifications

Tel: **01908 210257** Mobile: **07733 268438**

Little Linford Lane, Newport Pagnell
www.pjctreecare.com



Garden & General Maintenance

FRIENDLY, HONEST & RELIABLE

07554 661 449

LOCALLY BASED



All Tools Supplied

All Rubbish Taken Away

Fully Insured

House Maintenance

Garden Maintenance

Waste Removal

- Gutter Cleaning & Repair
- Iron Gate Repairs Restore & Repaint

- Grass Cutting
- Planting
- Strimming
- Hedge Cutting
- Weeding
- Fence painting
- Shed Repairs

- Sheds
- Garage
- Garden waste
- Rubble
- Building materials



HAPPY NEW YEAR

from

SHERINGTON NURSERIES

Opening Times: Monday to Saturday 9 - 4.30
Sunday 10 - 4.00

01908 610 236 / 210 672

www.sheringtonnurseries.co.uk
Bedford Road, Sherington, MK16 9NQ

WINTER SALE

Up To **50% Off**
Selected Items!

*** 50% Off All Christmas Decorations**

*** 50% Off Selected Terracotta Pots**

*** Coal £8.99 or 2 for £15.00**

Coffee Shop Offer - Buy Any Coffee - Get Another FREE!



www.albanhillnurseries.co.uk

High Street, Sherington, Newport Pagnell, MK16 9QP

JANUARY OPENING HOURS - SUNDAY - SATURDAY 10 - 4PM

01234 711513



www.facebook.com/albanhillnurseries

J. D. Landscapes



Landscape Design & Construction

Qualified professionals carrying out

PAVING	FENCING
PRUNING	PONDS
WALLING	PLANTING
DECKING	TURFING
HEDGE/TREE/SHRUB PRUNING	

Call **01234 711681 - 07768 621234**

A.J Block Paving

5 West Street, Moulton, Northampton

**Designers and
installers of
driveways, paths
and patios**

Experienced in laying all types of
surfaces

Domestic and commercial work
undertaken

Contact Dave:

07860 608001

01604 645850

For a FREE Quotation

A Happy New Year! What will it have in store for us in 2014? Will England get past the first round of the World Cup in Brazil? Will my own football team get promoted? We don't know. We have our hopes, we have good intentions, and we make our plans. But life has a habit of taking us by surprise, often forcing us to change our plans.

Some in Newport Pagnell are planning to join the Well at Willen in going on a summer pilgrimage to the holy places of the North East, eventually spending time on Holy Island itself. Pilgrimage, whether by foot or by vehicular transport, in modern times as in ancient times, is a journey of discovery. It's a journey from the known into the unknown. The intention in travelling to a holy place is the hope of making a discovery – perhaps of healing, forgiveness, reconciliation, faith, or of God. The pilgrimage starts with an act of dedication and commitment. Along the way there is fun and friendship, adventures to be had, new places to be found and stories to be told. What was expected at the outset is not always the outcome, but if along the way the pilgrim discovers more about himself, people, life and God, he is enriched by the experience.

Whatever 2014 brings to us, may we seize the opportunities, embrace the challenges, and become better people for the experiences. Michael Godfrey, Rector Newport Pagnell with Lathbury and Moulsoe.

New Year's Day Walk

What better way to start the New Year than with a bracing (or leisurely!) walk and fellowship with friends! The CTNP New Year's Day walk around the churches of the town has become a popular annual tradition. The event starts at St Luke's Church with a short act of worship at 10am. We then move on to each of the other churches in the town holding a short service in each church and ending with refreshments and an opportunity to chat together. The theme chosen for all the acts of worship this year was 'Peace' which was particularly apt as 2014 is the centenary of the outbreak of the 1st World War. We always welcome new faces on our walk, so if you missed it this year, put it in your diary now for 2015!

CTNP Forum

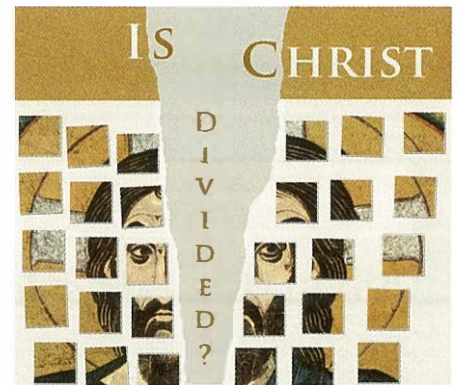
If you'd like to find out what the churches in Newport Pagnell have been getting up to recently, come along to our next Forum which meets on Thursday, 16 January at 7.45pm in the Methodist Church. This is an open meeting and everyone is welcome. It's a chance for you to have your say about the work the churches do in the community and an opportunity to influence plans for future projects and events. So do come and join us if you can.

Saturday 18th to Saturday 25th January is a very special week for our churches as we take part in the Week of Prayer for Christian Unity.

The week begins with a prayer vigil on the morning of Saturday 18th January in the Methodist Church. People from all the churches in the town take part in the vigil by going along to the Methodist Church between 9am and 1pm for half an hour or more for silent prayer.

The next day, Sunday 19th January, a united service will be held at St Bede's Church at 6pm and members of all the churches will be encouraged to continue to pray for unity throughout the following week.

The theme for the week will be: 'Is Christ Divided?'




Sue Gilbert
Gardens by Design

M : 07870 481963
T : 0800 228 9131

- Individual designs & personalised service
- Complimentary initial consultation & quotation within a 25 mile radius of Milton Keynes
- Gardens large & small from concepts to final plans
- Full construction & planting
- Designer of 2008 RHS Medal Winning Garden

www.suegilbert.co.uk

FIREWOOD SUPPLIES

Good quality, well seasoned logs

Hard & soft wood available

For a reliable, friendly service call:

01908 516387
07801 434042

GFS

FENCING SERVICES
GARDEN CLEARANCE
LANDSCAPING
HEDGE CUTTING
TURFING
NO VAT
All Carried Out Professionally and Courteously at Sensible Competitive Rates

MOB: 07740 715158
TEL: 01234 881633

LANDSCAPE GARDENING & BLOCK PAVING

01933 665466
07881 464301

25 YEARS in BUSINESS
Locally Owned

Malcolm Threadgold
154 London Road, Bozeat

PAVING PATIOS FENCES
GARDEN MAINTENANCE PATHWAYS CLEARANCE



Upright Fencing

All types of fencing supplied and erected

- Closeboard, Larchlap panels, closeboard panels, picket, gates, decking
- Repairs carried out
- No job too small or too large
- 25 years experience at sensible prices
- Free quotes

Tel: 07956 801322/01604 769918
clive@upright-fencing.com
www.upright-fencing.com

TAYLOR LANDSCAPES

- Shrub and hedge cutting, trimming and shaping
- Leylandii reduction and removal
- Pruning, turfing and planting
- Patio cleaning and block paving renovation
- Slab laying
- Garden clearance
- General maintenance and debris removal service
- Gutter cleaning
- Quality fencing & trellising supplied and fitted

01234 714634
07816 097797

Prince Charming

Robert Barker

Karen couldn't understand why the room was beginning to spin, and why she had started to feel sick. She had allowed herself only one drink ('White wine spritzer - lots of soda, please'), her limit when driving. She had felt fine all day, and had eaten as normal before going out.

'Are you ok?' asked Jason.

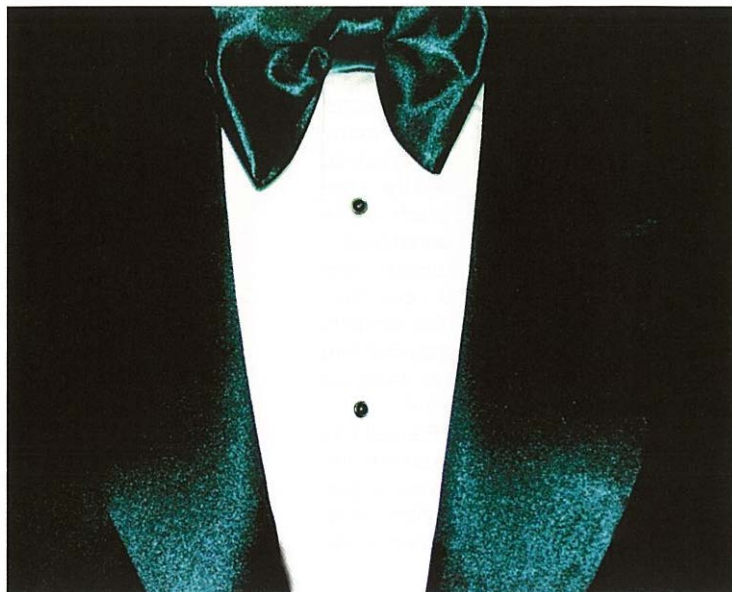
Jason was the stranger who had rescued her after her disastrous entrance to the club. She had tripped on the step and fallen headlong into a crowd of revellers, losing a shoe and dropping her handbag, scattering its contents all over the floor. Jason had very gallantly rushed to her aid and taken control. He'd made light of the incident ('Had a nice trip?'), helped her to a chair, found her shoe and placed it - Cinderella-style - on to her foot, picked up her bag and its contents, and gone to the bar to get her drink.

Karen had been very grateful, and as her embarrassment faded, she'd noticed how attractive he was - tall, slim, smartly dressed and well groomed, with dark hair and blue eyes. He was, like her, 30 and single, and he'd just moved into the area to start a new job in sales, which explained why she'd never seen him at the club before. She had allowed herself to be drawn in by his easy-going charm and humorous banter and had ended up spending the whole evening flirting and joking with him. Until, that is, when she had begun to feel unwell.

As she felt herself starting to faint, Karen knew she had to go home.

'I feel...a bit woozy...' she said rummaging around in her bag for her car keys, which she couldn't seem to find. 'I'm not sure I can drive...'

'Don't worry,' Jason smiled, producing her keys from his jacket pocket, 'I'll drive.'



Olney Library

Newport Library opening times:

Monday Closed

Tuesday 09.00 am - 7.00pm

Wednesday 09.00 am - 5.30 pm

Thursday 09.00 am - 5.30 pm

Friday 09.00 am - 5.30 pm

Saturday 09.00 am - 1.00 pm

Sunday Closed

Olney Library opening times:

Monday Closed

Tuesday 10.00 am - 6.00pm

Wednesday Closed

Thursday 10.00 am - 5.30 pm

Friday 1.00 pm - 5.30 pm

Saturday 10.00 am - 1.00 pm

Sunday Closed

LOCAL SUSTAINABLY FORESTED
HARDWOOD SEASONED LOGS
FREE DELIVERY TO OLNEY
& SELECTED VILLAGES
FROM £60 PER LOAD

HOLLINGTON WOOD
07762 441275 WWW.HOLLINGTONWOOD.COM

Higher Grade

Domestic & Commercial Carpet Cleaning Services

Don't delay
Call today

Our Advanced Dry Fusion System leaves your
carpets super clean and dry in no time at all

Free no obligation quote • Fully insured
• Friendly and reliable service

Call 07584 286 998

Email: highergrade@hotmail.co.uk

FIREWOOD LOGS

Established family run business

Dry, Seasoned & Ready To Burn

100% Hardwood

FREE
Delivery

SPECIAL OFFER
£52.50 per load
(builders bulk bag)

Tel: 01604 891 200
Mob: 07866 679 708

www.greenscene.co.uk

Company Registered in England & Wales No: 5659297 VAT No: 922 2703 52

GARDENCARE LANDSCAPE LTD

GARDEN DESIGN, CONSTRUCTION & MAINTENANCE

WWW.GARDENCARELANDSCAPE.CO.UK/OFFERS

VIEW COMPLETED GARDENS & MUCH MORE

WWW.GARDENCARELANDSCAPE.CO.UK/GALLERY

UNIQUE BREATHTAKING DESIGNS, PROTECTED BY GARDENCARE GUARANTEE

01933 312528

EST. 1964

Shelterboxes to the Philippines

The Rotary movement has always been at the forefront when international disaster strikes, and in conjunction with many registered charities, becomes involved both physically and financially. One such charity is Shelterbox, which stores emergency boxes in a UK warehouse – courtesy of monetary contributions – and is then able to despatch at very short notice to the areas of need. The contents of the box include a very substantial tent and other emergency items, all designed to give immediate help and relief.

The Rotary Club of Newport Pagnell has 'bought' shelter boxes for donation to the Philippines disaster appeal, at a cost of just under £600. If you want more information or wish to make a donation, you can see more details at shelterbox.org

Schools get Christmas Trees from Santa

Schools in and around Newport Pagnell again benefitted from a visit by members of the Newport Pagnell club, in the guise of Santa Claus and his dutiful elves. Christmas trees were presented to thirteen schools, with the support of Alban Nurseries, Sherington.

The Brooklands Club in Newport Pagnell was also handed a tree for the first time, which was decorated by members of the Rotary Club with the help of



ROTARY CLUB of Newport Pagnell



baubles and tinsel from Claytons Store. Christmas trees for schools has been around for many years, and it gives much satisfaction seeing the sheer delight on the childrens' faces when Father Christmas, complete with a tree, appears in the classroom.

Cedar School Garden Grant

Our Rotary Club has been delighted to award a Rotary District Grant of just under £1000 to the Cedars School in Newport Pagnell. This money has been donated to enable the school to improve its recreational facilities and provide a sensory garden experience for the children. Much of the spadework – literally – will be done by volunteer parents, with the money available to ensure that professional help and equipment can be provided as and when necessary.

Jaipur Charity Dinner

There's still time to acquire tickets for the Newport Pagnell Rotary Club's 18th Jaipur

Charity Dinner at The Jaipur Restaurant, Milton Keynes on Monday, 17th February 2014. Tickets are £27, the same price as last year, and can be purchased from any Rotary Club member, or by getting in touch with the Rotarians – contact details further down this page.

We'd be delighted to see you

If you'd like to find out more about us and want to make a difference, having fun and at the same time helping those less fortunate than yourself, come along and meet us. As a result of our regular feature in the Phonebox, we now have a healthy membership of 25 with others in the pipeline.

The Rotary Club of Newport Pagnell meets every Wednesday at the Swan Revived Hotel, Newport Pagnell. We are a dual gender dining club, but having a meal is optional. For those wanting a meal, then this takes place in the restaurant from 6.45pm onwards. Non-diners can arrive in time for the start of the meeting at 8pm. For more information, have a look at our website: www.newportpagnell.rotaryweb.org



Fully Equipped Workshop & Showroom in Olney

Unit 1, Lower Farm, Warrington, Olney, MK46 4HN (Near Captain Carpet & The Golf Studio)

Open Monday to Friday 9am to 5.30pm (plus out of hours emergency and answer system)

TEL: 01234 240680

WEB: WWW.COUNTER-ACT.CO.UK

EMAIL: SALES@COUNTER-ACT.CO.UK



What Counter-Act Systems Can Offer You....

- ⇒ Home Visits—we can help with computer problems, email setup, data transfer, wireless problems, virus clean and removal, PC slow issues, internet problems, iPhone connectivity, remote assistance
- ⇒ New Home Hardware—Desktop Systems from £279, Laptops from £339, System Upgrades inc. Processor, Memory and Hard Drives, Monitors, Printers, Scanners, Keyboards, Mice and all other hardware
- ⇒ New Business Hardware—Windows Servers from £599, Laptops from £379, Network Installation and Remote Maintenance, Domain Names and Email registration, Off-Site Data Backup

- ⇒ Extended Warranty—we now offer extended warranty on ALL brands of PC's, not just our own. Subject to survey we can extend your warranty for hardware and labour for 1, 3 or 5 years
- ⇒ Repairs—for Desktop and Laptop Computers—including Blue Screen Of Death (BSOD) issues, freezing, rebooting, laptop charging problems and broken laptop screens. All repairs carry a 12-month warranty as standard
- ⇒ NEW Phone Services—we now also repair Apple iPhones, iPads, Blackberry's and other smartphones, including freezing issues, broken screens, broken buttons and faulty charge sockets
- ⇒ If you're not sure what we can do for you, give us a call!!

Happy New Year

I write this as Christmas draws near and I still have some shopping to do (quite a lot in fact). At the same time, the weather along the East coast has been dreadful and more flood warnings have been issued. I just trust the new year brings better weather and better news. I do hope you all had a good Christmas and a good start to the new year.

Newport Pagnell Christmas Lights

Once again, congratulations are in order to the Committee for another superb Christmas Lights event, which was enjoyed on the 30th November. The day started cold but dry and continued that way. It was, in fact, a lovely November day, and it is not often we can say that. This was the 22nd year I have joined in. The High Street was lined with the usual range of stalls, some raising money for good causes with others for fun. Everyone who joined in was entertained by superb displays from local organisations and groups. It may have been cold, but it was a cheerful and enjoyable day and an excellent start to the Christmas celebrations.



Local Elections 2014

New Ward Boundaries _____

Over the past few months, my Focus Team Colleagues (Paul Alexander, Jane Carr, Andy Maric, Douglas McCall and Alan Richards) and I have been knocking on doors and talking to residents. Whilst the range of subjects has been wide, it has been noted that the changes to MK Council ward boundaries have not been fully taken on board. All our local elections for Milton Keynes Council in 2014 will take place on the 22nd May 2014 (when voters across Milton Keynes will elect 57 Councillors), alongside the elections for the European parliament.

Changes to the two Newport Pagnell MK Council wards _____

Newport Pagnell South Ward keeps its name, and will now include Giffard Park and Blakelands, with some roads moving from Newport Pagnell North Ward into Newport Pagnell South Ward. Newport Pagnell North Ward, however, becomes Newport Pagnell North and Hanslope Ward. This is a new ward formed from Newport Pagnell North and Hanslope Park Wards, and the new ward will include Stoke Goldington and Redhouse Park. The division between the new wards runs down the centre of the



length of Wolverton Road and the High Street. Each of the two new wards will elect three councillors in 2014.

Keep Our Children Safe _____

For several months now, numerous complaints have been received about chaotic and irresponsible driving and parking around Newport Pagnell's schools. New restrictions were recently introduced at two of our schools and they are there for a purpose, to reduce risk of injury and to keep our children safe from harm, as well as allowing a safe flow of traffic past the schools. It is sad to report that the parking restrictions are being ignored. Drivers do not take any notice of the fact that it is illegal to stop on the yellow zigzag lines. The excuse: 'I am only dropping my child off at school', does not wash and will earn a fine. The no parking restrictions and double yellow lines are to keep the road clear and safe for other traffic. The police have recently issued tickets to drivers for stopping on the yellow zigzags. Parking attendants have also issued tickets to those drivers who ignore the no parking restrictions. Please, make sure you keep risks to our children to a minimum.



Milton Keynes Budget _____

Milton Keynes Council's Conservative Administration has started the consultation on its budget for 2014/15. It contains a number of proposals for the residents of Milton Keynes to consider. The consultation runs until 15th February 2014 and I ask you to comment on the proposals. This year the Government has reduced the grant to Milton Keynes Council by £9.6m and some difficult choices will need to be made. The budget consultation details where the savings will have to come from. You can comment on the proposals at www.milton-keynes.gov.uk/consultations/Consultation/294 and your comments must be received by the 15th February 2014.

Milton Keynes Community Transport _____

Community transport is a service provided by Milton Keynes Council for the disabled and frail elderly residents of Milton Keynes who are unable to use mainstream public transport. The Council is currently conducting a consultation on the service, and the consultation can be found at www.milton-keynes.gov.uk/consultations/Consultation/295

Sinclair Fabrics

Curtains, blinds and soft furnishings
with a personal touch

An extensive range of quality wallpaper and fabrics, Roman, roller and vertical blinds.

An extensive range of upholstery fabrics.

We can also recover your furniture and make headboards to order.



Telephone for free advice

01933 663533

LONDON ROAD, BOZEAT

www.sinclairfabrics.co.uk

OPENING HOURS
MONDAY TO FRIDAY 9.00 – 5.00
SATURDAY 9.00 – 1.00
CLOSED BANK HOLIDAYS

HINSON

Custom Made Timber Products



certass



Hinson is a family run, local business, established in 1984.

We take pride in working together with our customers to create handmade custom products.

Internal, External & Bi Fold Doors, Sliding Sash & Casement Windows
Staircases & Conservatories, Kitchens: Cabinets & Furniture.

Contact us today for a free quotation, to create a true one-off product.

EXACTLY HOW YOU WANT IT.

01908 516333

info@hinson.co.uk

www.hinson.co.uk

HINSON, The Work Shop, Forest Road, Hanslope, Milton Keynes, MK19 7DE

First Clean Free

THE CLEANING SERVICE BELLE CASA

Beautiful Homes

We know how hard it can be to find a dependable and honest cleaner, which is where we can help.

We can offer you professional cleaning and ironing for a fully inclusive rate from only **£10.50** per hour (minimum of 2 hours per week).

All of our cleaners are specially selected, and insured, and you will receive the same cleaner each week.

So, if you'd like to take the pressure off keeping up with your household chores, then call us today on:

01234 490089

(answerphone available outside office hours)

or visit our website:

www.bellecasa.co.uk



Happy New Year! The Tigers class have finished off our "What's in the Box?" topic by writing our own stories with newly created characters based on traditional themes. We made puppets and also used electricity to light up Santa's reindeer! The Cubs class made reflective pictures and have been exploring 3D shapes by printing and wrapping them up to make pretend gifts. Our "Nursery Rhyme Nativity" saw the children performing the traditional nativity tale and singing to favourite nursery rhyme music underneath a backdrop of stars and homemade lanterns with gently flickering tea lights – battery operated of course! "Didn't they do well!" was heard all around. The children had fun decorating a Christmas tree and then paraded with lanterns and sang more Christmas songs for the All Saints Church Christmas Tree festival and Carol Concert, what a treat for parents and all who visited the church during the festive period. Staff and children enjoyed our Christmas Party with delicious food provided by The Bell & Bear pub, entertainment and even a visit from a very special visitor! Finally there was just time before end of term to take a trip to Northampton's Derngate theatre to see "Sleeping Beauty". Thank you very much to our Friends of Emberton School (FOES) mums for tirelessly fundraising throughout the year and giving up their time so that we can have special treats like these.



Stoke Goldington

Christmas celebrations were warmly enjoyed at Stoke Goldington CE First School with a packed calendar of trips and special events for all 26 children. The children worked incredibly hard to deliver a fantastic performance of their Nativity Play, 'A Little Bird Told Me,' and played to a packed audience of family and friends for two showings! They also thoroughly enjoyed two whole-school trips, firstly to Stoke Goldington Christmas Trees and right at the end of term to The Stables

at Wavendon to watch Alice in Wonderland. The New Year kicks off at School with the focus on activity and exercise. A 'Healthy Living' week will give all the children a chance to try out new sports and exercises and learn more about the importance of physical activity as a regular part of their everyday School life. The children will also continue to develop their dance skills every Friday afternoon with a specialist dance session at Stoke Goldington Village Hall led by Mrs. Williams.

Newton Blossomville

Our stand-in vicar received a surprise when Rev Mandy Marriott broke her sabbatical leave to attend the regular Thursday assembly with a present. Along with Foundation Governor Prof John Fielding she had discovered that Rev Tim Dawson had a special birthday due the day he was to visit us. As usual the candles were lit, the birthday prayer recited and our best wishes delivered in song.

Quantum Theatre paid us a visit to tell the cowboy themed story of innumerate bank robbers chased by the good guys. Number problems, facts and methods arose in context and the children enjoyed the knock-about atmosphere in the run-up to the panto season. Oh yes they did!



Sherington CE



The final weeks leading up to Christmas and the end of term were particularly busy. Our performances were well attended by villagers and parents, and, as always, it made Christmas magical. We enjoyed our puppet workshop and performance in the last week of school, and Carol singing to the villagers. We were thrilled to be informed that one of our Reception children was the runner-up in Mr Lancaster's Christmas card competition, and her winning entry has been on display in Milton Keynes. We have lots to look forward to as the weather changes- our work at Campbell Park has left a lasting impression on the children, as the leaf sculpture built by the whole school is still standing! We will be undertaking the Birdwatch activity at the end of January so hopefully there will be plenty to see!

Since our last report, the first XV have dogged out a solid victory away against a tough Dunstablians side in a forward dominated game. The side look to be playing some of their best rugby of the season so far, as many players settle into their positions and playing style. There is always great Rugby on at the Recreation Ground on a Saturday afternoon,

so why not come and down and watch. Once the January blues have subsided, the Six Nations kicks off, with all matches being shown in our warm friendly clubhouse. Our first home match of the season will be on the 11th January against Market Harborough which promises to be a tough fixture so why not come down and cheer the lads on! We would like to take this opportunity to thank all of our sponsors and supporters

for another great year at Olney RFC. We look forward to 2014 in anticipation of good weather and great Rugby at all levels of the game from Minis, Girls, Ladies through to the senior squad. If your New Year's resolution is to get fit - why not choose Rugby! Come down to the club on a Sunday (Minis, Juniors, Girls and Ladies) Tuesday or Thursday evening (Men) and give it a try!

THE HAIR & BEAUTY BOX
8 Bedford Road Yardley Hastings



**WISHING OUR CLIENTS AND FRIENDS
A HAPPY & PROSPEROUS NEW YEAR**

De-stress after the Festive Season with a relaxing Indian Head Massage for an introductory price of £25
If you're feeling indulgent you can follow it up with a Blow Dry for just £8.50 (half normal price)

(Offer ends 31st January)

Phone: 01604 696414 **book an appointment**

The Olney
TREATMENT ROOMS



Chiroprody Treatments: Nail care • Thickened, difficult, ingrowing toenails
• Corn and callus removal • Verrucae • Footcare for the elderly
• Diabetic foot assessment
• Sports injuries, paediatric foot problems.

Home visits by appointment

Hilary Rimmer BSc (Hons) Podiatry, MChS, BA (Hons) hcpc registered
The Olney Treatment Rooms, 15-17 Osborns Court, Olney MK46 4LA
t: 01234 240444 www.footwellpodiatry.co.uk
put your best foot forward



Physiotherapy for Ankle Problems: Putting Your Best Foot Forward in 2014

Happy New Year to you all and wishing you a healthy 2014.

I am Eileen Lewis, I have a Bsc in Physiotherapy and also am a qualified Acupuncturist with over 20 years experience. This month I am going to discuss foot and ankle problems.

The foot is very complex consisting of many bones and ligaments, tendons and muscles. The ankle joint is the articulation between the shin-bone, (Tibia) and the Talus. There are many more joints between all of the bones in the foot. All of these are vital as we walk or run over the ground, which is often uneven and requires the ankle and foot to move and adjust to take up the underlying surface and allow us to keep our balance. The surrounding muscles as a result must be strong and work in unison to provide coordination, balance and strength around the foot and ankle.

If this is not the case then we are prone to many musculoskeletal problems: ankle and foot sprains, tendinopathy's (eg Achilles), Shin Splints, Plantar fasciitis (pain under the foot) to name but a few. Physiotherapy is useful in treating these conditions by mobilizing stiff joints, prescribing strength and balance exercises, soft tissue massage type treatment to stretch out tight muscles and fascia, taping to stabilize joints and facilitate muscles and ultrasound or acupuncture to settle inflammation and pain.

So if you have an acute or chronic ankle or foot problem give me a call on 01234 881400 or email me eileen@bedfordphysio.co.uk
Also you may want to look at my website www.bedfordphysio.co.uk



Eileen Lewis
physiotherapy Chartered Physiotherapist
B.Sc MCSP AACP
www.bedfordphysio.co.uk

By appointment only
01234 881400
Evening appointments available
11 Bakers Close, Turvey, Bedford MK43 8GJ

- Back Pain
- Neck & Shoulder Pain
- Sports Injuries
- Joint Pain & Stiffness
- Acupuncture
- Headaches
- Whiplash
- Soft Tissue Injuries
- Strains & Sprains

Lynns Laundry

One year in and steaming ahead

Lynn's Laundry is celebrating a year's anniversary this month and it has been a successful year for the business.

We have been overwhelmed with the support and loyalty of the local community and our regular customers and I'd like to take this opportunity to say a big thank you to all.

We offer a full laundry service but unlike other laundrettes, Lynn's Laundry does it all for you. Simply drop off your laundry and have it washed, dried and ironed to perfection.

We also offer an alteration service with a fitting by appointment.

We have a prompt turnaround and we keep our standards consistently high. For a one off or regular help with your laundry, Lynn's Laundry is the place to go!

Lynn Cowley

From left to right; Georgina, Lynn and Sheryl

T: 01234 240 275 M: 07585 603 874
E: lynnslaundry@hotmail.co.uk

THE JEWEL OF INNER HEALING
 Certified Meditation Teacher BSoM and Reiki Practitioner

Would you like to enjoy the many benefits of meditation?

Here are just a few:-

- Stress/anxiety management
- Pain relief
- Quietens the mind and improves concentration
- Reduces digestive problems
- Improves sleep
- Looking and feeling younger
- Inner peace and happiness

Come and learn effective, genuine meditation techniques, any one can get the most from meditation and enjoy its benefits for life!

To find out more please visit:
www.thejewelofinnerhealing.co.uk

Call Julie on 01933 666046 or 07938 610080
thejewelofinnerhealing@hotmail.co.uk

NEAT FEET

Vicky Allen 01908 519086
 (BSYA)Footcare Specialist 07988 458403
vallen776@gmail.com

HAVE YOUR FEET CARED FOR IN YOUR OWN HOME

Need your toenails cut? Or fungal infection treated?
 Need corns removed? Athletes foot or verrucas treated?
 Need hard/callous or cracked skin removed?
 All finished with a relaxing foot massage
 Ring VICKY to discuss your treatment at competitive prices.

GEORGINA'S

MOBILE HAIRDRESSING

AFFORDABLE FULLY QUALIFIED EXPERIENCED FRIENDLY

For our Price List please see our website:
www.georginasmobilehairdressing.co.uk

TEL: 07977 129 459 OR 01234 710988

GREAT WITH KIDS!

Hair Play
 Mobile Hair Styling
Top quality styling in your own home

PRICE LIST
 (for more details please ring)

Ladies Cut & Blow Dry	£25	Ring Tracy
Men's Cut	£12	Home
Colours from:		01234 711932
Full Head Tint (with cut)	£50	Mobile
Foil/Mesh Colours (with cut)	£58	07545 700792
		FHBF Membership
		Fully qualified with City & Guilds

Woodlands Children's Centre

Serving Olney, Hanslope & surrounding villages



01234 241 837

From bump, to their first day at school....

At Woodlands we aim to:

- Encourage children to try new things, have fun and gain confidence, through a great range of activity session.
- Inspire parents and carers with practical ideas, from setting up messy play to getting a good night's sleep!
- Give you access to the latest information and resources available, through those busy early years.
- Connect you directly with professional experts who can help, should you need us to.



Acorn
Childcare
*professional care and early years education
with a personal touch*



Acorn Day Nurseries
for ages 4 months to 4 years
at

**Brafield-on-the-Green
Castlethorpe
Cedars (Newport Pagnell)**

- * Qualified professional staff
- * Small and friendly nurseries
- * Forest Schools and outdoor play
- * Freshly cooked healthy meals
- * Not for profit ethos: children come first
- * FREE government funded hours (subject to eligibility and availability)



*"I love Acorn's ethos, devotion to exceptional childcare, holistic and child based approach to everything."
"We chose Acorn for the emphasis on getting outdoors and being active"*
Quotes from Parent Questionnaire July 2013

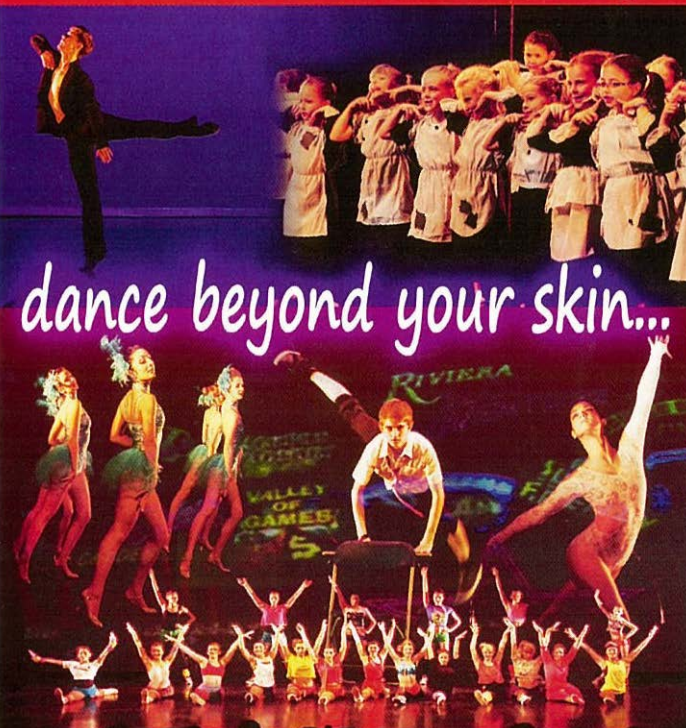
Acorn Childcare has further nurseries in Milton Keynes and at Burton Latimer

www.acornchildcare.co.uk

01908 510309

Dexterity

Estha Jones School of Dance



www.dexteritydance.com

For more info contact Estha Jones 07971 822 009

Are you looking for Quality Childcare?

- Are you returning to work?
- Are you struggling to find time for yourself?
- Are you accessing Nursery Education Funded Sessions for your 2, 3, 4, year olds?

- ✓ Enjoy peace of mind at Wellies Day Nursery
- ✓ Rural setting with large outdoor play facilities
- ✓ Independent Nursery established in 1989
- ✓ Home cooked meals provided in 5 Star EHO Rated facility
- ✓ Care for our environment - cotton nappies provided
- ✓ Bookings accepted from just 1 session per week

"Wellies is a warm & loving nursery, where each child is respected & encouraged every step of the way. The carers are extremely friendly & supportive, both to the children & parents. I would pick Wellies over any nursery every day of the week!"
Amy - Mummy to Emily



20% off second month Of booking
Quote : PB2013

Call Helen now on 01234 391600

helen@welliesdaynursery.co.uk | www.welliesdaynursery.co.uk
1 Brook End, North Crawley, Newport Pagnell, MK 16 9HH

Where Everyone Loves Learning in Exciting Surroundings

CHEMISTRY TUTOR

A level, AS level and GCSE - now offering Biology GCSE!

I have a doctorate in organic chemistry at the University of Oxford, twelve years (and counting!) experience as a professional medicinal chemist and tutoring experience at all three levels. So if you know your stuff and need to get an edge, or you are struggling with some (or all!) of the course content, I can help!

Competitive rates, based in Newport Pagnell but can travel

Testimonials available on request

For more info: Email: colmeister@hotmail.com
Phone: 01908 210448 (weekends and evenings)
Mobile: 07842 075720 (any time)

Dr Colin MacKinnon

B. Sc. (1st class Hons), D. Phil. (Oxon)

Private Drum Tutor

Owen Terry

A tutor to all ages and any level of experience.

Learn how to play Rock, Jazz, Metal, D+B and many more types and styles of music.

For more details contact Owen at:

Mobile: 07885 264337

Email: owenterry@hotmail.com



Olney Nursery offers your child a fun and secure nursery experience. We encourage learning through play but also believe in teaching structured activities to support learning in the early years.

We offer a learning environment where your child will be taught by a primary school teacher and a dedicated team of fully qualified early years practitioners.

Through daily structured activities Olney Nursery will be teaching your child essential skills which they will build upon throughout their educational journey.

Olney Nursery is open from 9 am to 12.15pm Monday to Friday term time only. We provide a spacious and stimulating learning environment for children aged from three to five years.

Olney Nursery fees are £4.64 per session for three and four year olds who claim the free government entitlement.



Olney Church Hall, High Street South, Olney Buckinghamshire, MK46 4AA

Telephone 01604 620781 / 07855075420

info@olneynursery.co.uk www.olneynursery.co.uk

Sara Lou Knightbridge BA (Hons) PGCE, EYPS

Looking for top-quality childcare?

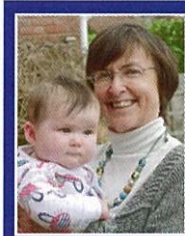
"Outstanding" Ofsted Graded Local Olney Childminder

Hilary Terry

Provides care for babies, toddlers and school-aged children

07590 422505

www.hilaryterrychildcare.co.uk



**Ofsted
Outstanding
2011/2012**

NORTHAMPTON HIGH SCHOOL

NURSERY TO SIXTH FORM (3 - 18 YEARS)



Outstanding success is achieved through a broad and challenging curriculum. In a happy, friendly environment, girls visibly grow in confidence and ability, emerging as fully rounded, educated young women.

JUNIOR SCHOOL OPEN WEEK

Monday 27 - Friday 31
January 2014

JUNIOR SCHOOL OPEN DAY

Friday 7 March 2014
9.30am - 12 noon

For more information on either of these events, please contact Registrar Mrs Heather Berry on 01604 765765 or email h.berry@nhs.gdst.net

Come and see for yourself.

Newport Pagnell Road, Hardingstone, Northampton, NN4 6UU
www.northamptonhigh.gdst.net | 01604 765765

MDH Computing Services

Adrian Macer

Personal Computer & IT Specialist

Telephone: 01234 712 668

Email: info@mdhcomputing.com



- Computer problems?
- PC noisy or keeps crashing?
- System unable to meet your current requirements – just too slow?
- Data Backup: - secure & regular backup's correctly?
 - Music – Photographs – Word & Excel Files – what about that Email?
- Broadband – shared Internet access including wireless router setup
- Would networking make file/data or Internet sharing easier?
- Domain Registration & personalised email

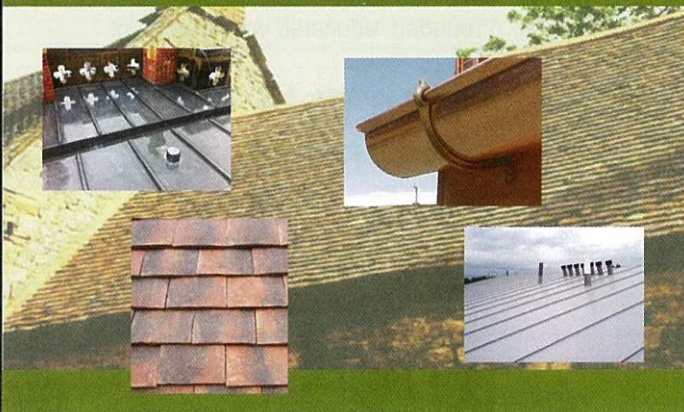
MDH-CS offer the following rapid and cost effective services:

- Computer repairs - both Home and Office systems
- Networks for Home or Office use – wireless or cable based – setup & configured
- Network cabling – designed, installed and configured
- Small Data Server systems for shared data applications – both Home and Office based
- Upgrading of existing PC hardware – increased memory, larger hard drives, DVD Drives
- New PC systems supplied to exact needs and requirements
- System Maintenance, cleaning & servicing
- Data & system backups – advice on hardware configuration
- Data transferred from your old PC to your new one
- Broadband, Internet & Email – assistance in setting up and configuring
- Other hardware supplied – Flat screen Monitors, printers, Sound systems, etc

NSC CONTRACTS

CONSERVATION - RESTORATION - PRESERVATION

Specialist Roofing Contractor



Free Quotation T: 01234 823367
Friendly Team E: info@nsecontracts.co.uk
Skilled Tradesmen www.nsecontracts.co.uk

All Types of Roofing Materials



Unit A, Firs Farm, Stagsden West End, Beds, MK43 8TB

Need a speedy and reliable window or lock repair?

Look no further than Three Shires Glazing

- ✓ Emergency window & door repair
- ✓ Misted units replaced
- ✓ Additional security installed
- ✓ Specialists in window, door & conservatory installation
- ✓ FREE quotations and competitive prices



Call us today on
01908 980068 (Newport/MK)
01234 712242 (Olney)
07768171021 (mobile)

3SG

THREE SHIRES GLAZING

Your local glazing and lock experts 3shiresglazing.co.uk

BAILEY WEBER KITCHENS

Kitchen Design, Supply & Installation.

Building work including extensions, conversions, plastering and tiling

SALE

NOW ON



SALE

NOW ON

Free Design Consultation and Quote please call

01908 216218

www.bailey-weber.co.uk

102 High Street, Newport Pagnell MK16 8EH

BOILER & CENTRAL HEATING SERVICES, REPAIRS & INSTALLATIONS



"The Local Specialists You Can Trust"

- Oil and Gas Boiler replacements
- Boiler maintenance and repairs on all makes of boiler
- Pressurised systems and all general plumbing work
- Underfloor heating and powerflushing
- Gas and Oil landlord's safety inspections
- Gas Safe and OFTEC registered
- Reliable friendly service from qualified engineers
- Quotes are free and returned promptly

moatside
plumbing & heating ltd
Est. 1995



Call now on **01234 480207**

or email us at: info@moatside.co.uk

Moatside Plumbing and Heating Ltd.

www.moatside.co.uk

Cox & Co

CHARTERED ACCOUNTANTS



David A Cox B.A., A.C.C.A., A.C.A.

We are able to offer professional advice in the following areas:

MANAGEMENT CONSULTANCY

TAXATION PLANNING

AUDIT AND PREPARATION OF ACCOUNTS

FINANCIAL PLANNING

There is no charge for an initial meeting to determine whether we can assist you with your business or taxation needs

Contact David Cox on **01234 888703**

or email david.coxco@tiscali.co.uk

The Granary, High Street, Turvey, Beds MK43 8DB

BODYCRAFT

Accident Repair Centre

So how much do our repairs cost?

We can often repair your vehicle for less than your insurance excess

- ✓ **Bumper scuffs**
- ✓ **Paint scratches**
- ✓ **Kerbed alloys**
- ✓ **Minor and major dents**
- ✓ **Airbag diagnostics**
- ✓ **Insurance and private work**
- ✓ **Loan car available (collection and delivery service available)**
- ✓ **Claims management services**



Local Family Run Business

01604 696104



Janlin Complex, Northampton Road,
Warrington, Olney, Bucks MK46 4HW



OPEN MONDAY TO FRIDAY 9.15AM-3PM SATURDAY 8AM-MIDDAY



MOT's IN OLNEY

ALL MAKES AND MODELS CATERED FOR

HILLIER HILL
UNIT 18, STILEBROOK ROAD
YARDLEY ROAD INDUSTRIAL ESTATE
OLNEY
BUCKS
MK46 5EA

TELEPHONE: 01234 713 871

HOURS:

MONDAY TO THURSDAY 8am to 6pm
FRIDAY 8am to 1pm

MOT's BY APPOINTMENT ONLY

TRADE ACCOUNTS WELCOME



Hillier Hill



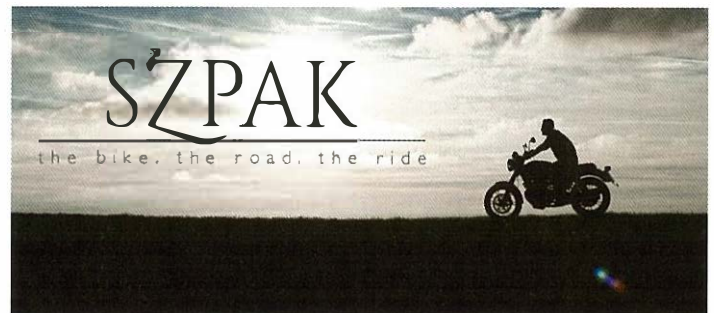
YARDLEY HASTINGS GARAGE

Accident repair specialists to all makes
Servicing, repairs, parts, tyres, fuel, car sales
Low bake oven using latest water based paints
Blackhawk body jig and measuring system
Laser 4 wheel alignment
Insurance repairs, private work, free estimates and advice
Claims management service available
Latest diagnostic equipment
Full range of mechanical repairs and servicing to all makes
Collection, delivery, loan cars available
Selection of used cars available,
plus car finding service

WE ARE LOOKING TO BUY LATE, LOW MILEAGE CARS FOR STOCK

8 - 5.30 Monday to Friday
8 - 12.30 Saturday

Bedford Road West, Yardley Hastings,
Northampton, NN7 1HB
Tel: 01604 696225 Fax: 01604 696551



Do you love your motorcycle?

MOT your motorcycle with us during January or February 2014 and be entered into a prize draw to

Win a portrait experience of you and your motorcycle with
SZPAK



Call 01908 551387

OPEN Mon to Fri: 08.00 - 17.00
Sat: 08.00 - 16.00 Sun: Viewing only
High Street, Stoke Goldington, MK16 8NP

D.S.Griffiths

INDEPENDENT MOTOR ENGINEER

Established 1982

- Servicing, Mechanical & Electrical Repairs
- Sun Diagnostic & Tuning Equipment for accurate Testing and Setting of modern computer systems
- Most makes and models of Cars & Light Commercials
- Parts Supply Service
- Tyres & Exhausts
- Valeting and Bodywork Repairs

COLLECTION & DELIVERY

Specialising in French, German & Landrover Vehicles

North End Road, Ravenstone, Olney,
Bucks MK46 5AN

Tel 01908 551339 Fax 01908 551525

Lavendon Garage L.W. Burrows & Son



Traditional Values, Modern Service

FREE WINTER CHECK DURING JANUARY

- MOT Tests
- Computerised Diagnostics
- Collections and deliveries
- Servicing
(all makes and models)
- Tyres & Exhausts
- General Repairs
- Used Car Sales
- £40+vat per hour
(what are you paying?)

Tel 01234 712 646

Lavendon Garage, Olney Rd, MK46 4EU

Souls of Olney



Souls Garage has been serving the local community for over 100 years. We offer competitive prices of servicing, MOTs and repairs to all makes and models.

Please call Jon or Simon for either a quote or advice **01234 712592**

Lime Street, Olney, Bucks MK46 5BA www.souls.co.uk

OPENING TIMES: Monday – Friday: 08.00–17.00, Saturday: 08.30–12.00 noon

- FREE COLLECTION AND DELIVERY SERVICE / LIFT TO WORK
- WASH AND VAC WHEN SERVICE CARRIED OUT
- LOAN CARS AVAILABLE (TO BE PRE-BOOKED)
- WHILE-YOU-WAIT MOTS
- GENUINE PARTS FITTED WHERE POSSIBLE
- NO ADDITIONAL WORK CARRIED OUT WITHOUT PRIOR AGREEMENT
- SERVICE PRICES FROM £88. MOTS FROM £30 WHEN DONE AT SAME TIME AS SERVICE
- BRAKES, TYRES, EXHAUSTS, BATTERIES, AIR CON AND ENGINE MANAGEMENT DIAGNOSTICS




Is your computer working beautifully?
Doing everything you want it to do?

Yes → **That's excellent!**
 (But make a note of our telephone number just in case)

No → **Call 01604 870394**
or Email: support@pc-firstaid.com

- *Free diagnosis, no-obligation quote*
- *No call-out charges*
- *No fix, no fee*
- *Free loan computers*
- *Available evenings and weekends*
- *One year's remote support included with setup or major service*



PC-FirstAid.com Limited
Your Local Computer Paramedic Service

NOEL & AARONS
Carpets & Flooring

Carpets Vinyls
Laminate Wood
Karndean Rugs Altro Safety Flooring



Underlays Grippers Door Bars
Mobile Showroom Free Estimates
Insurance Work Undertaken
Excellent Rates Shop Prices Beaten

Tel: 01908 618184
 Mobile: 07958 780061 or 07769 685310
www.noelandaaronflooring.com




LOW COST INKJET & LASER TONER CARTRIDGES

FAST DELIVERY


• BROTHER	• KODAK
• CANON	• LEXMARK
• DELL	• OKI
• EPSON	• PANASONIC
• HP	• SAMSUNG
• JET TEC	• XEROX




TEL: 01234 713137
EMAIL: sales@theinkandtonershop.co.uk
WEB: www.theinkandtonershop.co.uk
 56 Spinney Hill Road | Olney | Bucks | MK46 5AD



Bozeat Building Services

- ✓ Kitchens
- ✓ Bathrooms
- ✓ Electrical
- ✓ Carpentry
- ✓ Decorating
- ✓ All Aspects of Building Work
- ✓ Engineers - Gas Safe Part 'P'
- ✓ Electricians - NIC
- ✓ Qualified Tradesman
- ✓ Tree care
- ✓ Stoves supplied and fitted

Project Management Coordination

Peartree House, 21 London Road, Bozeat NN29 7LZ
 Tel: 01933 665930 Mobile: 07804 981801
 email: vilma.irving@btinternet.com

Panto to Pancakes – By Dave Pibworth



I hope you all had a good Christmas and New Year! If all has gone to plan, I will have spent most days over the festive period in Surrey; in a dress, makeup, large wig and a pair of flowery Doc Martens, in a pantomime as an ugly sister.

I confess that I'm writing this before Christmas, as once you're contracted into a pantomime, it's all a bit hectic. In pantomime you get about five days of rehearsals, and have to learn lines, songs and dances, and generally work with people you've never met for a sustained period of time, do publicity events, radio interviews and the like.

That's the easy bit. It's all the heavy drinking and drug taking that takes its toll as an actor, the amount of drugs I've been taking for the Arthritis, washed down with copious amounts of Horlicks is unbelievable! The throat pastels I've got through is...well... amazing, and that's how wild it is being in 'ShowBiz'. It's just one visit to Boots The Chemist after another, as you can also buy your makeup remover there at the same time.

But now I'm back in Olney for a bit and so am going local in this article. For all you Olney ladies, a great way to blow away the cobwebs is to start training for the Pancake Race, which is on March 4th this year if my trusty Day by Day Diary is right.

Well, let's be honest, you don't really have to train. I was recently speaking to a local lady, Isobel Righinioti, who was born here in Olney 82 years ago. She's run in the pancake race before, and wants to again, but is slightly concerned that there is a limit of 25 people allowed and she may not get in. I think that it's important the older ladies run in the pancake race to keep the spirit of the event alive.

I'm usually at the event, helping with the children's races and doing the bit with a microphone at the end of the main race, which mainly consists of keeping the crowd off the road, trying to think of clean jokes to entertain, and amusing children by making handkerchiefs disappear - I enjoy it very much!

I've seen the event progress over the years, and it is an excellent day out. Last year, Devon Byrne set a new world record of 56 seconds, which was brilliant. However, we need the older runners as well to balance out the fun aspect of it all.

When I was a boy, we would go and watch Mrs Dillingham, an older local lady, competing. I say 'competing', but as the word means 'to strive to establish superiority', it may be an exaggeration. I once recall her stopping for a cup of tea at the Church Hall en-route, so I guess she wasn't striving too much, and why should she? She was taking part in a race that started historically, due to a local townswoman being concerned she would be late for the Shrivings Service, running to the Church wearing her apron and carrying her frying pan. The only difference, was that Mrs Dillingham clearly wasn't concerned about being late for the service!

Anyway, I say that any lady over 75 should be given automatic entry should they want to take part, even if there are more than 25 people running. Let's be honest, they're hardly going to clog up the road in the event of a photo finish. I also think that someone should be outside the Church Hall with a cup of tea for any of them that should want one! Maybe the younger ones should go out and train and the older ones just fill in the form!

As sponsorship seems such a large part

of it all now, The Olney Drama School will sponsor a prize for the oldest competitor. I'm not sure what the prize will be yet, as I've only just come up with the idea, but next month I shall announce what we will give. If anyone has any ideas do contact me as I would like it to be interesting.

While on the subject of our drama school, we do have places in the younger group now (8 to 10 years in age) as they have almost all moved up to the 11 years and up. It is held on Tuesday nights at the Olney centre, starting at 4pm. Give Anna or I a ring if you're interested. (See below.)

We teach acting, stage craft, comedy improvisation and magic, and many other performance related skills.

Who knows, with the experience we give them, they may end up dressed up as an ugly sister in Surrey at Christmas, or even running in the pancake race when they're 80!

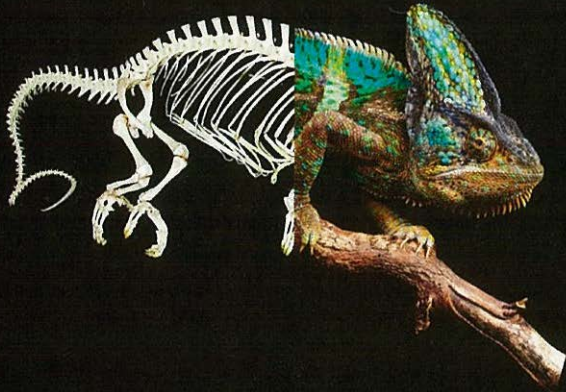
David Pibworth - Appearances

David's Olney Drama School, at the Olney Centre on Tuesdays during term time, now has availability for younger members (8 - 10). Classes are at 4pm for one hour, where they learn stage craft, performance and magic skills. Please email annamktoc@yahoo.co.uk for details or phone 01234 241357.

David is directing 'Fawlty Towers' at The Chrysalis Theatre in March 2014 and 'Blackadder 2' in September 2014. Tickets are selling very fast and are available on line at www.mktoc.co.uk

BEFORE

AFTER



Transform Your Business in Print with

Phonebox
M A G A Z I N E

— Design & Advertising —

Do you or your child lack confidence in

MATHS

and would benefit from some extra help or tuition (occasional or regular)?

If, "Yes", please call

01908-610956
kjnpn-1@talktalk.net

All ages and levels welcome.

☺ + ☺ = 2☺

Want to make more of your computer?

Call Stephen at **O.C.S.**

on 07860 669182

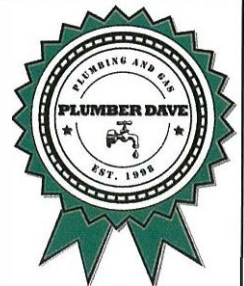
for help or hints with

- Repairs and upgrades
- E-mail
- Networks
- Virus protection & solutions
- Broadband
- Wireless

Certified IT Professional
Registered Broadband Installer

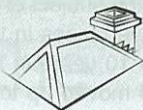
PLUMBER DAVE

- ★ 24 hours a day 365 days of the year
- ★ All aspects of Heating, Plumbing and Boiler Breakdowns
- ★ Local Fast Friendly Service and advice
- ★ A Traditional, reasonable, quality service you can trust
- ★ 25 + years of experience
- ★ No VAT on labour



Vulcanhall ltd

Tel: 07961 441 871 - 01908 218 925



Morris
Roofing &
Leadworks



www.morrisroofs.co.uk

Specialists in:

- New Roofs/Re-Roofs
- Roof Repairs
- Lead Work Specialist
- Chimney Repairs
- EPDM Flat Roofing

"10 YEAR INSURANCE BACKED GUARANTEE"

Call Lee today on:

07764 483071 or 01908 412376

Email: lee@morrisroofs.co.uk

WS Building Services & Brickwork

SPECIALISING IN
Bricklaying • Stonework • Plastering

No job too small

Good quality workmanship with a reliable service

CONTACT WILL ON

01234 720628 OR 07787 180172

EMAIL: williamscconstruction@gmail.com

Locally based, 74 High Street, Harrold, Beds MK43 7BH

Professional Gutter Clearing



PRO-MAX
The Outside Cleaning Specialist

Using The Latest CCTV
Footage Technology

No Scaffolding or ladders



Avoid damage to your property and expensive repair bills

We also clean commercial premises, Solar Panels and conservatories.

FREE Quotation

AVAILABLE 7 DAYS A WEEK

Tel: 01234 713 976

Mob: 07809 330 030

www.pro-maxgutteringclearing.co.uk

ken@pro-maxinfo.com

Teen Scene

Music

McBusted!!! If I could've chosen the worlds coolest bands and put them together it would've definitely been McFly and Busted. And they've only gone and done it for us, they've now formed the World's biggest and best super group EVER! McFly and Busted have come together to form "McBusted". Busted joined McFly on their 10th anniversary tour as special guests, they performed 2 Busted songs and one McFly song; under the name "McBusted". When they performed together on stage they had an instant chemistry. They entertained the crowds and were received very well. Performing is something that comes naturally to them all and when they came together on stage it simply worked. In November 2013 they announced they would tour in 2014 over 9 tour dates. Due to popular demand and much relief of the fans they added 23 extra dates so now you lucky, lucky, people have 32 dates across May & June to go and witness history in the making. It's going to be great and I can't wait. They gave us a little taster of what's in store on Children In Need last Year; they put on an amazing show including some killer dance moves. Not only is McBusted one of the most exciting things this year, the cutest couple Tom Fletcher and his beautiful wife Giovanna Falcon announced that they are having a baby, they did this the only way they know how and made a YouTube video of them carving pumpkins that spelt out "We're having a Baby". HUGE congratulations to them. If you guys love McBusted as much as me then I suggest you go online and get you tickets now. Enjoy!

HAPPY NEW YEAR!

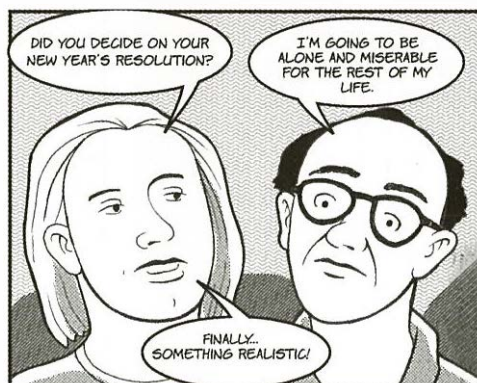
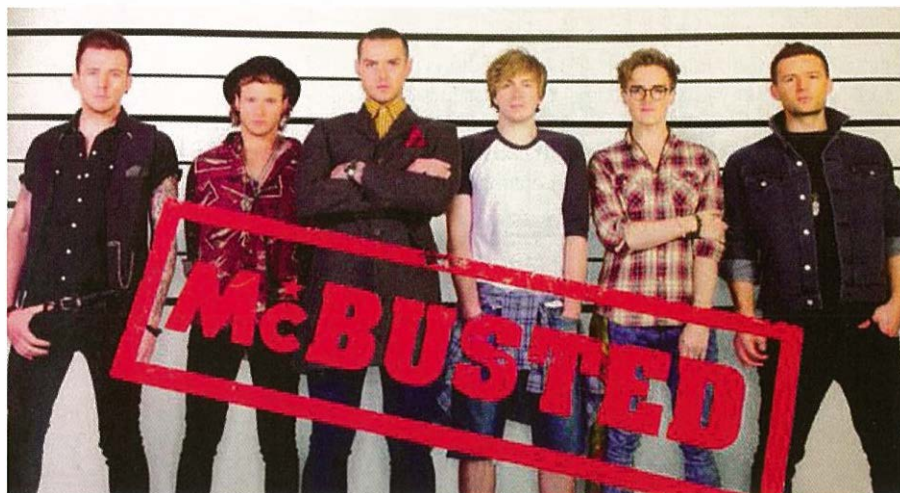
Phoebe.x

INTRO

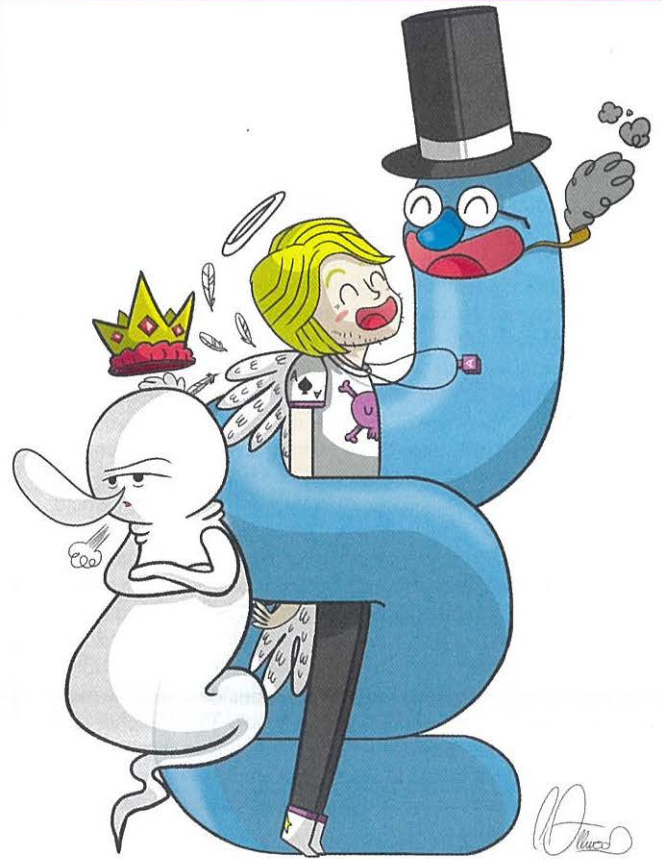
I hope you all had a wonderful Christmas and got everything you asked for. I had a great Christmas. I went to my Grandparent's for Christmas dinner which was delicious. How'd you all celebrate New Year? I think it's pretty safe to say everyone had a party. I had a lovely couple of weeks off, I can't believe it's already 2014. 2013 went so quickly it's hard to believe another has gone by and it's not long until summer already! There's lots going on this year like the McBusted tour... read on for more! I hope you all have a good January, Happy New Year everyone. Bye for now, Phoebe

New Year

So every year I try and make a New Year's resolution but I don't really ever stick to it. I'm sure I'm not the only one who does this, however, this year I'm trying to make a good resolution and stick to it, any good ideas? I asked everyone what they thought my resolution should be. I've now come to the conclusion that I'm going to work really hard at school because it's forever getting closer to my GCSEs. This would be the easier resolution to stick to unlike my resolution last year; to read more books. That never really worked although I read "To kill a Mockingbird" from start to finish for English but I don't think that really counts. So have any of you made any resolutions? If you have then good luck trying to stick with it. Happy New Year, I hope you all have a great 2014.



**Spot the Difference
9 to Find**



Find:

- ALETSCH
- BERING
- BRIKSDAL
- FEE
- FOX
- FURGG
- HARVARD

- HORN
- HUBBARD
- HUMBOLDT
- JAMTAL COOK
- CESAR
- DIAMOND
- FOREL
- SALMON
- CAMBRIA
- VOLTA



GLACIERS

Solve the Word search or sudoku or enter the spot the difference and send it in together with your name and address to Kids Corner, Phonebox Magazine, Unit 2 Stanley Court Olney Bucks MK46 5NH. The first correct entry drawn out of my hat will win £10 and the next three correct entries drawn will receive £5 each Send your entries in by the 15th of the month.

KiDS CORNeR

**Last Month's Winners
Yeeeeeaaaaaaaaahhh!!**

- 1st** Nicole Jackson Newport Pagnell
- 2nd** Miss Amellia Bryant Northampton
- 3rd** Jack, Rosie, Beth Olney
- 4th** Cameron & Kaitlin Barby Newport

L J A M O C C N W I N R N W O M F Z Y L X T M
 R I Y T Q L V P Q F S D M C V M H N W S H Y O
 L C F V T V M O P B U X R A Z Q W Z F A Q I T
 Y R G L C N J S L A T M A J V I N L P N B R Q
 C K X J N C O E X T S A E C E S A R J Q Y O B
 B H M Z N R U T I S A T S R G N Y I R U V J O
 F R A N Z J O S E F U A E M D N O M A I D D K
 O S I N F K V D N C E E C R A E I H S N R A B
 R T V K D S H A N G T E N A Z N G V R T R P Z
 E I H F S R C U T D M N K M M E O L B I S C V
 L X M Z A D A G M N I E T S B B R R A N B M K
 P G S O L A A W W B A F F A T E R Z J C M Q E
 Q E A C M S N L W H O J K Y L B R I Y O E M C
 A K V Q O N E A R A O L O Q S E R I A O B T U
 U Y J Z N C T P T D B R D K F D T E N K X R X
 F T O N P V O J Y A R A N T U O G S N G T A S
 H F S R Y B Q G A L H K N Z R L X V C V S U Q
 I V D R A B B U H X A C Q O G K L C U H A O W
 L H H D P O K U D X L I I O G W H H W D I H O
 V J R Q D P Y L D R A V R A H U S E Z W E L C

		1		3			
	7				1		
			8			7	3
	6	4			9	1	3
8			1		7		2
	1	7	4			6	9
9		8			5		
			3				5
				2		3	

THE ANGEL WITH A DIRTY FACE



A.W.A.D.F. FACTS: ACE IS IN A ROCK BAND CALLED 'JAPANESE BRITPOP' AND HIS DAD IS MADE FROM 92% BLUE PLASTICINE.



ANGEL WITH AN EGO



By Len Allwood



Make one New Year Resolution you'll enjoy keeping! Take up, or come back, to tennis this year, and you'll soon be hooked; enjoying fresh air, exercise and a lot of fun at OTC. You can play in groups or with your family and friends. Adult membership is under £2 a week, so what's stopping you?! There are also coaching sessions for all ages – young and old. Come along and have a go, you will be very welcome. Details are on our website at www.olneytennis.net or email Nigel at admin@nigelwillardtennis.co.uk

Teams

The B team have climbed to the top of their division after a convincing 7-1 win against Stony Stratford. Gun Chui Hwang, Simon Barter, Sarah Wilkinson and Glynise King did the job for Olney, who are unbeaten. The A team suffered their first defeat against a strong Wolverton side. However, it was good to see our latest



NP Football Club

Newport Pagnell Town's fortunes continued to fluctuate in November and early December. They suffered more injury problems when they lost Lucasz Filipiak with a broken leg, in the match away at Deeping at the end of November.

Newport produced two good performances to win 3-2 at home against Peterborough Northern Star, and only lost narrowly 2-1 to a late goal away at fourth-placed Rushden and Diamonds. The next match at Willen Road was a disappointing 0-0 draw against a Boston Town team which is second from bottom of the UCL Premier Division. Newport were reduced to 10 men just before half time, when John Thorpe was harshly shown a red card for a challenge which seemed no worse than one or two that an inconsistent referee did not feel even merited yellow cards later in the game. Even with only 10 men, they would be disappointed not to have managed a winning goal against a poor Boston Town team.

By the time you read this we will know the results of the remaining December matches, a home match against a Sleaford team only two places above Newport in the league, and then difficult matches against two of the top three teams, Huntingdon and Spalding, before the Boxing Day match at Willen Road against local rivals Kempston.

The New Year starts with a series of matches from which Newport will hope to get some points and move up from their current 15th position. After a late December visit to Stewarts and Lloyds Corby, currently one place below Newport, they have home matches against Long Buckby (4th January), who are currently just one place above them, and the bottom team, Harborough (11th January), followed by a third consecutive Saturday at home on 18th January, when the visitors will be Wisbech.

At the time of writing, fixture details after 18th January have not yet been published, so keep an eye on the Newport Pagnell Town Football Club website for news of results and fixtures, www.pitchero.com/clubs/newportpagnelltown, or look out for posters around the town for details of home matches.



MXD Champions, Susie and Daniel Cornwell, playing together for the first time, and hopefully the first of many. The slightly older generation was represented by Eleanor Carter and Stephen Bateson!

Club Dinner

The annual dinner was successfully run again at the Courtyard in Olney, with all tickets sold well in advance. The Club Championship trophies were presented by the Head Coach Nigel Willard, as well as awards to the Most Improved Man – Paul Norbury and Most Improved Lady- Emma Maitland. The Chairman, Simon Barter presented the Club Member Award to Tim and Jo Bedward, who run the American Tournaments so well.

Olney Junior Disco

Over 50 tennis playing dancers hit the floor at the Olney Youth Club, after great organisation by the Junior Committee. The Head Coach was spotted strutting his stuff in the fortunate near darkness!



New Adventures

It's cold, it's wet, it's England. So why not jet off to a warmer climate to beat those winter blues? How about celebrating Australia day, 26th January, on the other side of the globe, and soaking up some sun? Or using up that Christmas money on a trip to India – which can be expensive to get to but will be cheap once you're there? Taking some time to plan your holidays, even if you don't plan on going away until later in the year, can be just the thing you need to keep you going through those winter days, when it seems constantly dark and you can't remember the last time you saw the sun, or left the house in less than four layers of clothing.

Perhaps the cold weather has got you in the mood for some winter sports, a trip to France or Switzerland in the New Year can be a great time to get the skis out, or even just to enjoy some scenic, snowy views and warming

POST CHRISTMAS BLUES

log fires. Visiting somewhere that doesn't come to a standstill when the snow comes can be quite refreshing, allowing you to still get out and about despite the snow. If that makes you shiver at the thought, maybe the planning option is the best one for you! If you've got some money left over from the expensive Christmas season, the January sales can provide some great discounts for summer and pre-summer holidays and short trips, you don't even need to leave the country to get away. A spring trip to the Lake District as the blossom appears on the trees is a beautiful one, or wrap up warm and take a trip to Scotland. Later in the year trips to the Canary Islands tend to be quite affordable if you're after something a little warmer, as do places such as Croatia and Spain.

Whether you decide to stay or leave, why not use 2014 to have an adventure, or at least plan one!



M J King

PLUMBING ~ HEATING ~ BATHROOMS

Bathrooms a Speciality
Including Floor and Wall Tiling

30 years experience

Mark King

Sherington 01908 612320 ~ 07887 643912

NO VAT ON LABOUR

K.W. SMITH & SONS



- Carpentry
- General Maintenance
- Painting & Decorating
- Tiling
- Miscellaneous Repairs
- Free Estimates
- No Job Too Small
- Local & Reliable

T: 01234 714194

M: 07513 129124

kwsmith57@hotmail.com



REMOVALS



HANDYMAN



GARDEN RUBBISH
HOUSE CLEARANCE



BUILDING
MAINTENANCE



PAINTING &
DECORATING

"He's handy that Andy!"



**ANDY
MAN**
ASSISTANCE

- Looking for someone whose prices are realistic?
- Need someone at a time to suit you?
- Looking for a really nice, reliable 'man with a van'?

You've found him...

Call Andy on: **01234 306036** Mob: **07889 458327**

For all your electrical needs
DCMD Electrics Ltd



07810 551512

01908 617693

dcmdelectrics@btinternet.com

www.dcmdelectrics.co.uk

Electrical Safety
Register

incorporating
ELECSA

ELECSA
Approved Contractor
Part P
www.elecsa.co.uk

City &
Guilds
Qualified

Marcus Jordan

PROPERTY MANAGEMENT



Co



www.marcusjordan.co.uk
www.rightmove.co.uk

01234 714348



HomeLet
TAKING THE BEST OUT OF PROPERTY RENTAL



of our
preferred
rightmove.co.uk
The UK's number one property website



Larr

School of Motoring

- ✓ Excellent pass rate
 - ✓ 14 years experience
 - ✓ Learn in a brand new Mini
- FREE 1.5 hour driving lesson (first lesson)
 - Lesson prices from £18 per hour
 - FREE mock theory tests
 - FREE motorway lesson after passing test
 - Pass Plus available

CHRIS LARR B.G. (A.D.I.)

www.larr.co.uk

01234 910249 • 07957 104984

"Don't Slip Up This Winter"

PRO-MAX
The Outside Cleaning Specialist

No Mess, No Chemicals

- Block Paving & Patios
- Paths & Driveways
- Concrete & Tarmac
- Wooden Decking
(Dangerous when dirty)
- Brick & Stone, lime Walls

AVAILABLE 7 DAYS A WEEK

Tel: 01234 713 976 Mob: 07809 330 030

www.pro-maxdrivewaymaintenance.co.uk | ken@pro-maxinfo.com

Property Maintenance & Repair

Plumbing • Electrics

Bathroom Installation

FULLY INSURED • NO JOB TOO SMALL

ABS

07836 277717
01234 713030

12 Aspreys
Olney

Mick Moyle

Registered Electrician
and General Handyman

For Professional Service and Quality Workmanship

Free Estimates, No call out charge

01908 612 278

07903 130 093 / 07810 417 492

www.mickmoyle.co.uk

1 Purcel Drive | Newport Pagnell | MK16 0BP



MATE MAINTENANCE

- CALL YOUR LOCAL FRIENDLY MATE
- ALL PLUMBING and HEATING JOBS
- HOUSE REPAIRS and MAINTENANCE
- DRIPPING TAPS TO FULL BATHROOM and KITCHEN INSTALLATIONS
- ALL WORK FULLY INSURED AND GUARANTEED
- REFERENCES SUPPLIED
- DISCOUNT FOR SENIOR CITIZENS



Call PETER

on **07886 802993** for free
advice and quotations

Office **01234 712854**

131 High Street Olney MK46 4EF

www.matemaintenance.co.uk

**"SMALL ENOUGH TO CARE"
"BIG ENOUGH TO COPE"**



Federation of Small Businesses
The UK's Leading Business Organisation

Guttering Problems?



- Gutters Cleaned
- Leaking Gutters Repaired
- New Gutters Fitted

All by a friendly, local and established company
(Newport Pagnell)

Call Rob on
01908 216151 or 07977 206403

Greg Hardie Roofing

For all your roofing needs, from a broken tile to a complete re-roof.

- Tiling
- Slating
- Lead Work
- Flat roofing
- Chimneys
- Guttering
- Fascias
- Soffits

Email: greg@greghardieroofting.co.uk
www.greghardieroofting.co.uk

Tel: **01234 241512** or **07810 370195**

Wicksfix

Just some of the services we can provide:

- **Woodwork & Ironmongery** Installation of wood-floors/ skirtings and architraves; Internal & External door hanging and fitting of locks.
- **Plumbing & Drainage** Installation of bathroom suites/washing machines/dishwashers and outside taps.
- **Kitchen Refurbishments** Installation of kitchen units worktops & tiling
- **Garden fencing, gates & Decking**

For **QUALITY** service and **FREE** quotation please call Jason on **01933 666046** or **07763 865568**
www.wicksfix.co.uk

and much more...



VAN REMOVALS
7 DAYS A WEEK

Large van with tail lift

- Courier Work Domestic & Commercial
- Removals
- House Clearance
- Deliveries
- Furniture Pick Up
- Garden Waste

Looking for a really nice, reliable 'man with a van'? You've found him...

Call Andy on: **01234 306036** Mob: **07889 458327**

FITTED BEDROOM & HOME STUDY FURNITURE

- From design to installation
- Custom built to your requirements
- Over 15 years experience
- Compare my quality and prices with Hammonds and Sharps
- No pressure selling

FOR A FRIENDLY RELIABLE SERVICE CALL

GREG LANE

01234 713998 • 07946 625795

Get it Sorted!

Carpentry - Tiling - Wood Flooring - Plumbing
 Kitchen & Bathroom Installation - Garden Fencing
 Pressure Washing - Door Installation - Electrical
 Painting & Decorating - General Maintenance

*All the above services are available at extremely competitive rates. Please contact us, to discuss your project requirements and arrange your free quotation. **No VAT on Labour***

Sorted

Property Improvement & Maintenance

Olney, Bucks - 07889 441330 / 01234 713826
stuart@sortedproperty.co.uk - www.sortedproperty.co.uk

MATT WILKINSON BUILDERS



- EXTENSIONS
- GARAGE CONVERSIONS
- INTERNAL ALTERATION
- BLOCK PAVING
- PATIOS & GARDEN WALLS
- BRICKWORK & POINTING

NO JOB TOO SMALL

07887 731884 • 01234 712569

www.mattwilkinsonbuilders.co.uk

2 Lace Mews, Olney MK46 4JS

COX'S AERIALS

- TV & FM Aerials
- Established 1964
- A professional & high quality service
- A quick response to your individual needs
- Satellite dish moving & repairs
- Supply & installation of freeview digital boxes
- Multi Points



Call us on T: 01234 822 006
 M: 07974 933 526
 E: coxaerials@gmail.com
 28 Oakley Rd, Bromham, MK43 8HY



J. G. Southall

For all your general odd jobs and property maintenance

Please call Jon on

01234 721886

07986 601273

CLIMAheat

Central Heating Services

Keith Pryce

Tel 01234 241172

Mobile 07764 577292

www.climaheat.co.uk

corgi registered

24-Hour call-out

Installation, maintenance & repairs on all Gas appliances



K R HEATING

GAS CENTRAL HEATING SPECIALISTS



164893

Gas Safe Registered

INSTALLATION MAINTENANCE AND REPAIRS ON ALL GAS APPLIANCES

FREE ESTIMATES

Telephone 01234 240780
 Mobile 07767 303310

Kevin Smith

Carpenter & Joiner

ALL ASPECTS OF CARPENTRY AND BESPOKE JOINERY UNDERTAKEN, INCLUDING:

**Doors & Windows • Kitchens & Worktops
Flooring • Built-in Furniture • Stairs**

Tel: **01234 714790 / 07738 179432**

Email: kevin84smith@btinternet.com

Qualified • Experienced • Reliable

D.V. Boddy

Electrical Contractors

Domestic • Commercial • Industrial

All work part P approved

01234 711116 or 07841 196227

dvboddyelectricalcontractors@hotmail.com



Your local Painter & Decorator

P.C. Painting & Decorating Services

INTERIOR & EXTERIOR

FULLY INSURED • PROFESSIONAL FRIENDLY SERVICE

SATISFACTION GUARANTEED • NO HIDDEN COSTS

City & Guilds qualified since 1986

Please call Paul Chapman for a 'no obligation' quote

01234 241437 or 07831 333443

DAVID SHEPHERD CARPENTER & JOINER



OFFERING A LOCAL & RELIABLE SERVICE FOR ALL YOUR CARPENTRY NEEDS INCLUDING:

- * Kitchens & Worktops * Windows * Interior & Exterior Doors *
- * Supply & Fit of Bespoke Freestanding & Built-in Furniture *
- * Stairs * Property Improvements *

Tel: **01908 617356 / 07986 463572**

MEGEARY BUILDERS LTD

- New Build
- Extensions
- Renovations
- PVCu Windows and Conservatories

TEL **01234 714508/240200** MOBILE **07775 700151**

EMAIL paulmegeary@tiscali.co.uk

Meadow Rise, East Street, Olney, Bucks MK46 4DH

OLNEY MOBILE CARPETS

A. DOWNES

Carpets and Vinyls Supplied and Fitted

30 YEARS FITTING EXPERIENCE

Choose in the comfort of your own home

* Huge Selection *

NO SHOP OVERHEADS SO BETTER PRICES!

FREE FITTING

Ring **Tony** on Olney **01234 713296**

Mobile **07850 580347**

Blue Flame

Tel: **01908-216769**
Mob: **07860-332287**

PLUMBING & HEATING ENGINEERS
BREAKDOWNS and INSTALLATIONS



CALL NOW
FORA QUOTE



www.blueflamemk.co.uk

Home Solutions

Property Maintenance

Kitchen Installations

Timber & Laminate Floors Laid

Timber & UPVC

Windows Fitted

Decorating

Free estimates and advice from
Geoff Mynard

Tel: **01234 712119**

Mob: **07570 463332**

Based in Olney

STORAGE

at Mill Farm,
Gayhurst

Contact

Arthur Adams

01908 611489

07713 740746

OLNEY AERIALS TELEPHONE, INTERNET & ELECTRICAL SERVICES

Serving Olney and the surrounding areas for over 20 years

- Satellites (Sky/Free-Sat)
- TV Points
- Plasma/LCD Installations
- Telephone Points
- Internet Points
- Data Cabling
- Ceiling Speakers/Spot Lights
- Home Entertainment Systems

DAY TIME **07799 552323**

EVENING **01933 663303**

OR **01908 234555**

www.leoknight.com



melis
Mediterranean & Turkish Cuisine

Get the Authentic
Turkish Experience



Four Amazing Offers to Start the New Year

Monday
MADNESs
Finger Food selection

One plate of Borek (Turkish Pastry with Feta cheese), Humus, Russian Salad, Tabule, Roast Potatoes, Turkish dips and Spicy Sausage, Dolma (stuffed vine leaves) and bread

Just £6.50 per person

OR

Bring A Friend for Half the Price!

Half price per second dinner

(Mondays only. Any item on menu, Excludes drinks)

Fun For Four

Spend Over £50 pound and receive a

FREE BOTTLE OF WINE

(Offer available for tables of four or more available Monday to Thursday)

Pensioners 10% OFF

Monday to Thursday

Tel: 01234 714 355

melisrestaurant.com

07919 575 379 - Yelda



Available For
Birthdays, Weddings,
Business Meetings,
Private Room Hire.

*You Will Not
Be Disappointed*

NO.1



In Olney

5-11 Osborn Court, Olney, Bucks, MK46 4LA